

For Research Use Only

# CD22 Monoclonal antibody

Catalog Number: 66103-1-Ig **1 Publications**



## Basic Information

<b>Catalog Number:</b> 66103-1-Ig	<b>GenBank Accession Number:</b> BC109306	<b>Purification Method:</b> Protein A purification
<b>Size:</b> 150ul , Concentration: 3400 ug/ml by Nanodrop and 2187 ug/ml by Bradford method using BSA as the standard;	<b>GeneID (NCBI):</b> 933	<b>CloneNo.:</b> 7A2F1
<b>Source:</b> Mouse	<b>UNIPROT ID:</b> P20273	<b>Recommended Dilutions:</b> WB 1:2500-1:10000 IHC 1:10000-1:40000 IF-P 1:200-1:800 IF/ICC 1:400-1:1600
<b>Isotype:</b> IgG2a	<b>Full Name:</b> CD22 molecule	
<b>Immunogen Catalog Number:</b> AG17986	<b>Calculated MW:</b> 847 aa, 95 kDa	
	<b>Observed MW:</b> 135 kDa	

## Applications

<b>Tested Applications:</b> WB, IHC, IF/ICC, IF-P, ELISA	<b>Positive Controls:</b> WB : Ramos cells, Raji cells, Daudi cells IHC : human tonsillitis tissue, human appendicitis tissue IF-P : human tonsillitis tissue, Raji cells IF/ICC : Raji cells,
<b>Cited Applications:</b> IF	
<b>Species Specificity:</b> human	
<b>Cited Species:</b> human	
<b>Note-IHC: suggested antigen retrieval with TE buffer pH 9.0; (*) Alternatively, antigen retrieval may be performed with citrate buffer pH 6.0</b>	

## Background Information

CD22, also known as Siglec-2 (sialic acid binding Ig-like lectin 2) or BL-CAM (B-lymphocyte cell adhesion molecule), is a 130-140 kDa, B-cell restricted, type I transmembrane glycoprotein belonging to the immunoglobulin gene superfamily. The expression of CD22 is developmentally regulated. It is expressed at low levels in the cytoplasm of pro-B and pre-B cells and present on the cell surface only at mature stages of B-cell differentiation. Cell surface expression is lost during terminal differentiation into plasma cell and after B-cell activation. CD22 is an inhibitory receptor for B-cell receptor (BCR) signalling, preferentially binds to alpha-2,6-linked sialic acid and mediates B-cell B-cell interactions. It plays a crucial role in activation and differentiation of the B-cell.

## Notable Publications

Author	Pubmed ID	Journal	Application
Sumeng Wang	38111199	J Biomed Res	IF

## Storage

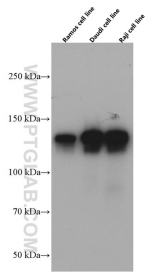
**Storage:**  
Store at -20°C. Stable for one year after shipment.  
**Storage Buffer:**  
PBS with 0.02% sodium azide and 50% glycerol pH 7.3.  
**Aliquoting is unnecessary for -20°C storage**

\*\*\* 20ul sizes contain 0.1% BSA

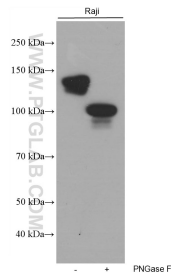
For technical support and original validation data for this product please contact:  
T: 1 (888) 4PTGLAB (1-888-478-4522) (toll free in USA), or 1(312) 455-8498 (outside USA)  
E: proteintech@ptglab.com  
W: ptglab.com

This product is exclusively available under Proteintech Group brand and is not available to purchase from any other manufacturer.

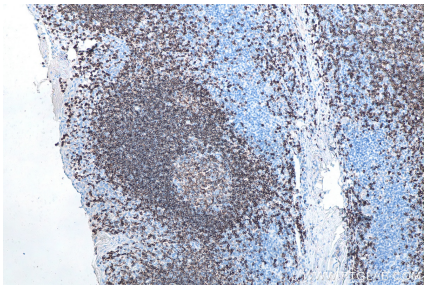
Selected Validation Data



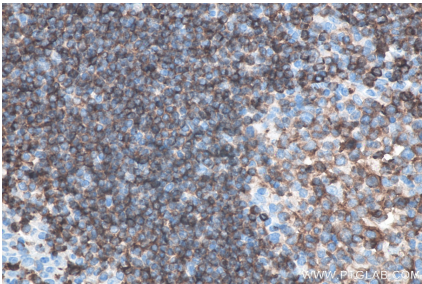
Ramos, Daudi, and Raji cells were subjected to SDS PAGE followed by western blot with 66103-1-Ig (CD22 antibody) at dilution of 1:5000 incubated at room temperature for 1.5 hours.



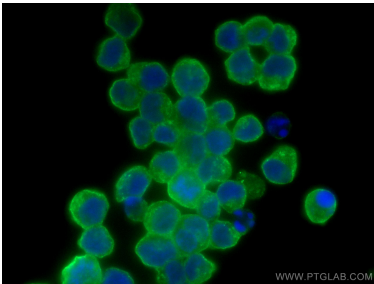
Untreated and PNGase F-treated lysates of Raji cells were subjected to SDS PAGE followed by western blot with 66103-1-Ig (CD22 antibody) at dilution of 1:20000 incubated at room temperature for 1.5 hours. PNGase F was obtained from Atagenix (cat.NO. ata808).



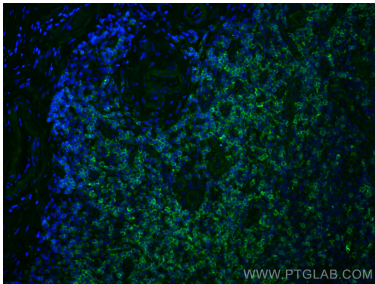
Immunohistochemical analysis of paraffin-embedded human tonsillitis tissue slide using 66103-1-Ig (CD22 antibody) at dilution of 1:20000 (under 10x lens). Heat mediated antigen retrieval with Tris-EDTA buffer (pH 9.0).



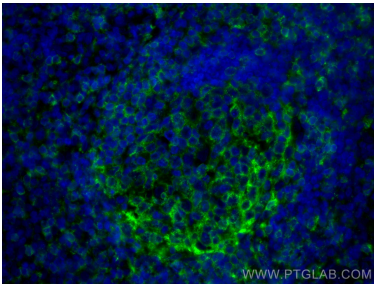
Immunohistochemical analysis of paraffin-embedded human tonsillitis tissue slide using 66103-1-Ig (CD22 antibody) at dilution of 1:20000 (under 40x lens). Heat mediated antigen retrieval with Tris-EDTA buffer (pH 9.0).



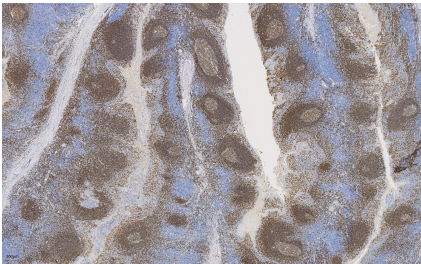
Immunofluorescent analysis of (4% PFA) fixed Raji cells using CD22 antibody (66103-1-Ig, Clone: 7A2F1 ) at dilution of 1:800 and CoraLite®488-Conjugated AffiniPure Goat Anti-Mouse IgG(H+L).



Immunofluorescent analysis of (4% PFA) fixed human tonsillitis tissue using CD22 antibody (66103-1-Ig, Clone: 7A2F1 ) at dilution of 1:400 and CoraLite®488-Conjugated AffiniPure Goat Anti-Mouse IgG(H+L).



Immunofluorescent analysis of (4% PFA) fixed human tonsillitis tissue using CD22 antibody (66103-1-Ig, Clone: 7A2F1 ) at dilution of 1:400 and CoraLite®488-Conjugated AffiniPure Goat Anti-Mouse IgG(H+L).



Immunohistochemical analysis of paraffin-embedded human tonsillitis tissue slide using 66103-1-Ig (CD22 antibody) at dilution of 1:20000 (under 4x lens). Heat mediated antigen retrieval with Tris-EDTA buffer (pH 9.0).