

For Research Use Only

PGM1 Monoclonal antibody

Catalog Number: 66105-1-Ig



Basic Information

Catalog Number: 66105-1-Ig	GenBank Accession Number: BC001756	Purification Method: Protein A purification
Size: 150ul , Concentration: 820 ug/ml by Bradford method using BSA as the standard;	GeneID (NCBI): 5236	CloneNo.: 2G5A8
Source: Mouse	UNIPROT ID: P36871	Recommended Dilutions: WB 1:2000-1:10000 IHC 1:50-1:500 IF/ICC 1:500-1:2000
Isotype: IgG2b	Full Name: phosphoglucomutase 1	
Immunogen Catalog Number: AG7294	Calculated MW: 61 kDa	
	Observed MW: 61 kDa	

Applications

Tested Applications: WB, IHC, IF/ICC, ELISA	Positive Controls:
Species Specificity: human, mouse, rat, rabbit, pig	WB : HeLa cells, MDA-MB-231 cells, HepG2 cells, pig liver tissue, rabbit liver tissue, rat liver tissue, mouse liver tissue, pig heart tissue, rabbit heart tissue
Note-IHC: suggested antigen retrieval with TE buffer pH 9.0; (*) Alternatively, antigen retrieval may be performed with citrate buffer pH 6.0	IHC : human colon tissue, human liver cancer tissue
	IF/ICC : HepG2 cells,

Background Information

PGM1(Phosphoglucomutase-1) is also named as glucose phosphomutase 1 and belongs to the phosphohexose mutase family. It catalyzes the transfer of phosphate between the 1 and 6 positions of glucose. In most cell types, PGM1 isozymes predominate, representing about 90% of total PGM activity. One exception is red cells, where PGM2 is a major isozyme(PMID:8257433). Defects in PGM1 are the cause of glycogen storage disease type 14 (GSD14) (PMID:19625727). It has 2 isoforms produced by alternative splicing.

Storage

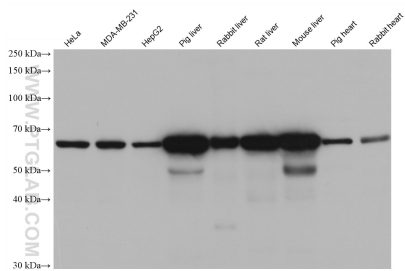
Storage:
Store at -20°C. Stable for one year after shipment.
Storage Buffer:
PBS with 0.02% sodium azide and 50% glycerol pH 7.3.
Aliquoting is unnecessary for -20°C storage

*** 20ul sizes contain 0.1% BSA

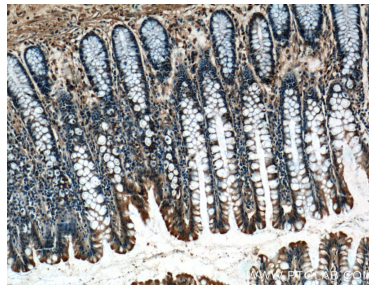
For technical support and original validation data for this product please contact:
T: 1 (888) 4PTGLAB (1-888-478-4522) (toll free in USA), or 1(312) 455-8498 (outside USA)
E: proteintech@ptglab.com
W: ptglab.com

This product is exclusively available under Proteintech Group brand and is not available to purchase from any other manufacturer.

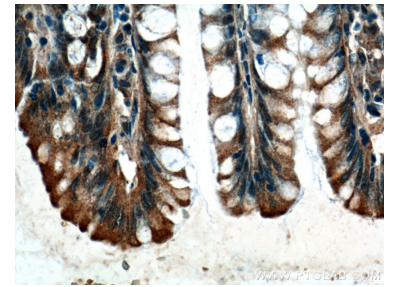
Selected Validation Data



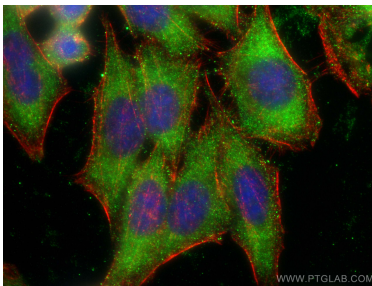
Various lysates were subjected to SDS PAGE followed by western blot with 66105-1-Ig (PGM1 antibody) at dilution of 1:5000 incubated at room temperature for 1.5 hours.



Immunohistochemical analysis of paraffin-embedded human colon tissue slide using 66105-1-Ig (PGM1 Antibody) at dilution of 1:200 (under 10x lens).



Immunohistochemical analysis of paraffin-embedded human colon tissue slide using 66105-1-Ig (PGM1 Antibody) at dilution of 1:200 (under 40x lens).



Immunofluorescent analysis of (-20°C Ethanol) fixed HepG2 cells using PGM1 antibody (66105-1-Ig, Clone: 2G5A8) at dilution of 1:1000 and CoraLite®488-Conjugated AffiniPure Goat Anti-Mouse IgG(H+L), CL594-phalloidin (red).