

For Research Use Only

SMARCD1 Monoclonal antibody

Catalog Number: 66116-1-Ig 1 Publications



Basic Information

Catalog Number: 66116-1-Ig	GenBank Accession Number: BC009368	Purification Method: Protein G purification
Size: 150ul , Concentration: 1700 ug/ml by Nanodrop and 1047 ug/ml by Bradford method using BSA as the standard;	GeneID (NCBI): 6602	CloneNo.: 2F2G6
Source: Mouse	UNIPROT ID: Q96GM5	Recommended Dilutions: WB 1:500-1:2000
Isotype: IgG1	Full Name: SWI/SNF related, matrix associated, actin dependent regulator of chromatin, subfamily d, member 1	
Immunogen Catalog Number: AG19100	Calculated MW: 58 kDa	
	Observed MW: 58 kDa	

Applications

Tested Applications: WB, ELISA	Positive Controls: WB : Jurkat cells, HepG2 cells, human brain tissue
Cited Applications: WB	
Species Specificity: human	
Cited Species: rat	

Background Information

SMARCD1 (SWI/SNF related, matrix associated, actin dependent regulator of chromatin, subfamily d, member 1), also known as BAF60a (BRG1-associated factor 60A), Rsc6p or CRACD1, is a 476 amino acid protein that localizes to the nucleus and contains one SWIB domain. Expressed ubiquitously with notable expression in liver, brain, muscle, lung, kidney, pancreas and placenta, SMARCD1 functions as a component of the BAF complex and, in conjunction with a variety of other proteins, plays an essential role in chromatin remodeling. In addition, SMARCD1 influences vitamin D-mediated transcriptional activity and is thought to provide a link between the vitamin D receptor (VDR) and SWI/SNF chromatin remodeling complexes. Multiple isoforms of BAF60a exist due to alternative splicing events.

Notable Publications

Author	Pubmed ID	Journal	Application
Mengwen Feng	38688398	Eur J Pharmacol	WB

Storage

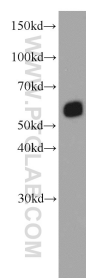
Storage:
Store at -20°C. Stable for one year after shipment.
Storage Buffer:
PBS with 0.02% sodium azide and 50% glycerol pH 7.3.
Aliquoting is unnecessary for -20°C storage

*** 20ul sizes contain 0.1% BSA

For technical support and original validation data for this product please contact:
T: 1 (888) 4PTGLAB (1-888-478-4522) (toll free in USA), or 1(312) 455-8498 (outside USA)
E: proteintech@ptglab.com
W: ptglab.com

This product is exclusively available under Proteintech Group brand and is not available to purchase from any other manufacturer.

Selected Validation Data



Jurkat cells were subjected to SDS PAGE followed by western blot with 66116-1-Ig (SMARCD1 antibody) at dilution of 1:1000 incubated at room temperature for 1.5 hours.