

For Research Use Only

APOL1-Specific Monoclonal antibody



Catalog Number: 66124-1-Ig

Featured Product

15 Publications

Basic Information

Catalog Number: 66124-1-Ig	GenBank Accession Number: BC017331	Purification Method: Protein A purification
Size: 150ul, Concentration: 3700 µg/ml by Nanodrop and 1573 µg/ml by Bradford method using BSA as the standard;	GeneID (NCBI): 8542	CloneNo.: 1G12D11
Source: Mouse	Full Name: apolipoprotein L, 1	Recommended Dilutions: WB 1:20000-1:100000 IP 0.5-4.0 ug for IP and 1:5000-1:50000 for WB
Isotype: IgG2a	Calculated MW: 44 kDa	IHC 1:500-1:5000 IF 1:50-1:500
Immunogen Catalog Number: AG2016	Observed MW: 39-45 kDa	

Applications

Tested Applications:
FC, IF, IHC, IP, WB, ELISA

Cited Applications:
IF, IHC, IP, WB

Species Specificity:
human

Cited Species:
human

Note-IHC: suggested antigen retrieval with TE buffer pH 9.0; (*) Alternatively, antigen retrieval may be performed with citrate buffer pH 6.0

Positive Controls:

WB: human plasma tissue,

IP: human plasma tissue,

IHC: human liver tissue, human kidney tissue

IF: HepG2 cells,

Background Information

Human apolipo-protein L1 (APOL1) is a minor component of plasma high density lipoprotein (HDL) particles, acting as an interacting protein of apolipoprotein A1 (ApoA1). The human ApoL protein family was thought to be predominantly involved in lipid transport and metabolism. APOL1 is also involved in host innate immunity against Trypanosoma parasites. Once activated, APOL1 can lyse the parasite and protect human from infection. Genetic variants in APOL1 gene, which are found in African ancestry with high frequency, associate with chronic kidney disease, like focal segmental glomerulosclerosis (FSGS), HIV-associated nephropathy (HIVAN), and hypertensive nephropathy. APOL1 share structural and functional similarities with proteins of the Bcl-2 family and may have roles in apoptosis and autophagy. It is notable that APOL1 exists only in human and a few other primate species, and mouse does not express an APOL1 orthologue. This antibody recognizes the endogenous ApoL1 of 39-45 kDa in blood lysate. This antibody is specific to APOL1.

Notable Publications

Author	Pubmed ID	Journal	Application
Vinod Kumar	30201495	Am J Pathol	WB,IF
Junnan Wu	34651582	J Clin Invest	WB
Junnan Wu	34715018	Immunity	WB,IF

Storage

Storage:

Store at -20°C. Stable for one year after shipment.

Storage Buffer:

PBS with 0.02% sodium azide and 50% glycerol pH 7.3.

Aliquoting is unnecessary for -20°C storage

*** 20ul sizes contain 0.1% BSA

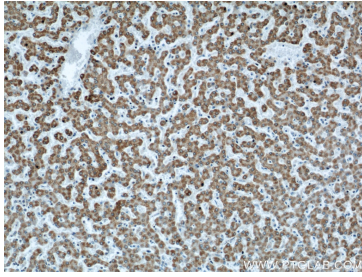
For technical support and original validation data for this product please contact:

T: 1 (888) 4PTGLAB (1-888-478-4522) (toll free in USA), or 1(312) 455-8498 (outside USA)

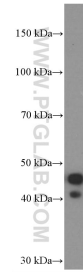
E: proteintech@ptglab.com
W: ptglab.com

This product is exclusively available under Proteintech Group brand and is not available to purchase from any other manufacturer.

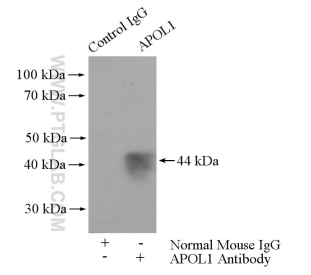
Selected Validation Data



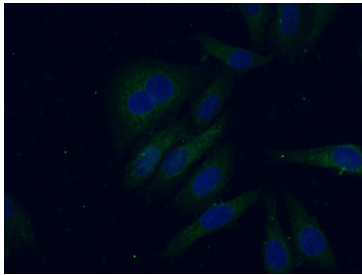
Immunohistochemical analysis of paraffin-embedded human liver using 66124-1-Ig(APOL1 antibody) at dilution of 1:500 (under 10x lens).



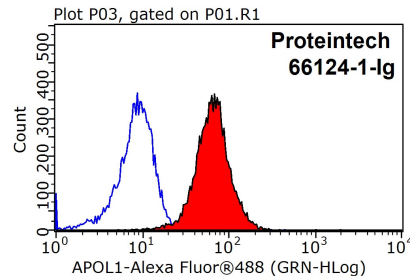
1.5 ug human plasma was subjected to SDS PAGE followed by western blot with 66124-1-Ig (APOL1 Antibody) at dilution of 1:400,000 incubated at room temperature for 1.5 hours.



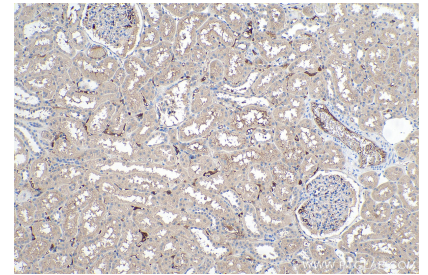
IP Result of anti-APOL1 (IP:66124-1-Ig, 5ug; Detection:66124-1-Ig 1:10000) with human plasma lysate 4000ug.



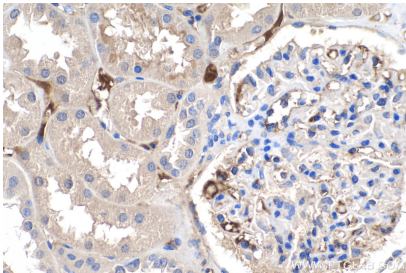
Immunofluorescent analysis of (-20°C Ethanol) fixed HepG2 cells using 66124-1-Ig(APOL1 antibody) at dilution of 1:100 and Alexa Fluor 488-conjugated AffiniPure Goat Anti-Mouse IgG(H+L).



1X10⁶ HepG2 cells were stained with 0.2ug APOL1 antibody (66124-1-Ig, red) and control antibody (blue). Fixed with 90% MeOH blocked with 3% BSA (30 min). Alexa Fluor 488-conjugated AffiniPure Goat Anti-Mouse IgG(H+L) with dilution 1:1000.



Immunohistochemical analysis of paraffin-embedded human kidney tissue slide using 66124-1-Ig (APOL1-Specific antibody) at dilution of 1:5000 (under 10x lens). Heat mediated antigen retrieval with Tris-EDTA buffer (pH 9.0).



Immunohistochemical analysis of paraffin-embedded human kidney tissue slide using 66124-1-Ig (APOL1-Specific antibody) at dilution of 1:5000 (under 40x lens). Heat mediated antigen retrieval with Tris-EDTA buffer (pH 9.0).