

For Research Use Only

# GOSR2/Membrin Monoclonal antibody

Catalog Number: 66134-1-Ig

Featured Product

1 Publications



## Basic Information

<b>Catalog Number:</b> 66134-1-Ig	<b>GenBank Accession Number:</b> BC009710	<b>Purification Method:</b> Protein A purification
<b>Size:</b> 150ul, Concentration: 1800 ug/ml by Nanodrop and 1113 ug/ml by Bradford method using BSA as the standard;	<b>GeneID (NCBI):</b> 9570	<b>CloneNo.:</b> 7E7C7
<b>Source:</b> Mouse	<b>UNIPROT ID:</b> O14653	<b>Recommended Dilutions:</b> WB 1:1000-1:6000 IHC 1:20-1:200 IF-P 1:200-1:800
<b>Isotype:</b> IgG2a	<b>Full Name:</b> golgi SNAP receptor complex member 2	
<b>Immunogen Catalog Number:</b> AG21393	<b>Calculated MW:</b> 212 aa, 25 kDa	
	<b>Observed MW:</b> 25 kDa	

## Applications

<b>Tested Applications:</b> WB, IHC, IF-P, ELISA	<b>Positive Controls:</b>
<b>Cited Applications:</b> WB	<b>WB :</b> HeLa cells, HSC-T6 cells, Jurkat cells, PC-12 cells, HEK-293 cells, HepG2 cells
<b>Species Specificity:</b> human, rat	<b>IHC :</b> human liver tissue,
<b>Cited Species:</b> human	<b>IF-P :</b> human liver cancer tissue,
<b>Note-IHC: suggested antigen retrieval with TE buffer pH 9.0; (*) Alternatively, antigen retrieval may be performed with citrate buffer pH 6.0</b>	

## Background Information

Golgi SNAP receptor complex member 2 (GOSR2), also known as GS27 or Membrin, is a member of the soluble NSF attachment protein receptor (SNARE) family of vesicle docking proteins. GOSR2 is localized in Golgi apparatus. It is involved in transport of proteins from the cis/medial-Golgi to the trans-Golgi network.

## Notable Publications

Author	Pubmed ID	Journal	Application
Dolma Choezom	35050379	J Cell Sci	WB

## Storage

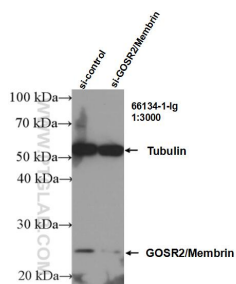
**Storage:**  
Store at -20°C. Stable for one year after shipment.  
**Storage Buffer:**  
PBS with 0.02% sodium azide and 50% glycerol pH 7.3.  
Aliquoting is unnecessary for -20°C storage

\*\*\* 20ul sizes contain 0.1% BSA

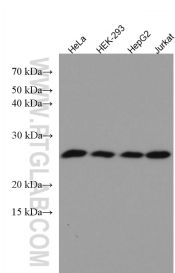
For technical support and original validation data for this product please contact:  
T: 1 (888) 4PTGLAB (1-888-478-4522) (toll free in USA), or 1(312) 455-8498 (outside USA)  
E: proteintech@ptglab.com  
W: ptglab.com

This product is exclusively available under Proteintech Group brand and is not available to purchase from any other manufacturer.

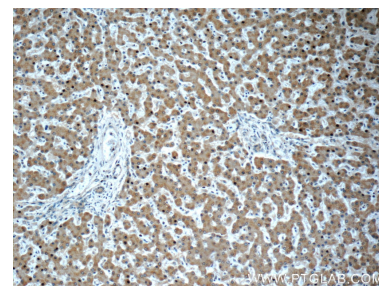
## Selected Validation Data



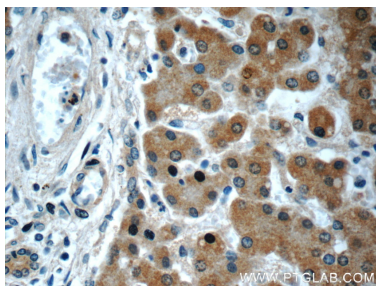
WB result of GOSR2/Membrin antibody (66134-1-Ig; 1:3000; incubated at room temperature for 1.5 hours) with sh-Control and sh-GOSR2/Membrin transfected Jurkat cells.



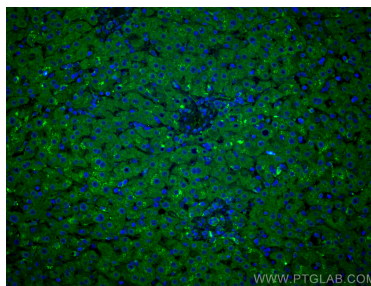
Various lysates were subjected to SDS PAGE followed by western blot with 66134-1-Ig (GOSR2/Membrin antibody) at dilution of 1:3000 incubated at room temperature for 1.5 hours.



Immunohistochemical analysis of paraffin-embedded human liver slide using 66134-1-Ig (GOSR2/Membrin antibody at dilution of 1:50.



Immunohistochemical analysis of paraffin-embedded human liver slide using 66134-1-Ig (GOSR2/Membrin antibody at dilution of 1:50.



Immunofluorescent analysis of (4% PFA) fixed human liver cancer tissue using GOSR2/Membrin antibody (66134-1-Ig, Clone: 7E7C7) at dilution of 1:400 and CoraLite®488-Conjugated Goat Anti-Mouse IgG(H+L).