

For Research Use Only

# HBE1-Specific Monoclonal antibody

Catalog Number: 66151-1-Ig



## Basic Information

|  |   |  |
|--|---|--|
| <b>Catalog Number:</b><br>66151-1-Ig   | <b>GenBank Accession Number:</b><br>NM_005330 | <b>Purification Method:</b><br>Protein G purification                |
| <b>Size:</b><br>150ul , Concentration: 1811 µg/ml by<br>Nanodrop and 1040 µg/ml by Bradford<br>method using BSA as the standard; | <b>GeneID (NCBI):</b><br>3046                 | <b>CloneNo.:</b><br>2C11G6   |
| <b>Source:</b><br>Mouse  | <b>Full Name:</b><br>hemoglobin, epsilon 1    | <b>Recommended Dilutions:</b><br>WB 1:500-1:1000<br>IHC 1:500-1:2000 |
| <b>Isotype:</b><br>IgG1  | <b>Observed MW:</b><br>16 kDa                 |  |

## Applications

|  |   |
|--|---|
| <b>Tested Applications:</b><br>FC, IHC, WB, ELISA  | <b>Positive Controls:</b>                                       |
| <b>Species Specificity:</b><br>human   | <b>WB :</b> K-562 cells,<br><b>IHC :</b> human placenta tissue, |
| <b>Note-IHC: suggested antigen retrieval with TE buffer pH 9.0; (*) Alternatively, antigen retrieval may be performed with citrate buffer pH 6.0</b> |   |

## Background Information

The hemoglobin molecule is a tetramer consisting of two  $\alpha$ -globin-like polypeptide chains and two  $\beta$ -globin-like chains. The human hemoglobin genes are expressed in a tightly developmentally controlled fashion.  $\epsilon$ -globin (HBE1) is the predominantly expressed gene during the embryonic stage. The epsilon hemoglobin chain seems to be the best marker for fetal nucleated red blood cells (NRBCs). Anti-HBE1 may be used to label and isolate fetal cells from maternal blood and can be useful in prenatal diagnosis. This antibody specifically recognizes the HBE1 and doesn't cross-react with other globin chains.

## Storage

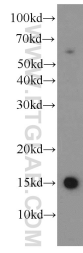
**Storage:**  
Store at -20°C. Stable for one year after shipment.  
**Storage Buffer:**  
PBS with 0.02% sodium azide and 50% glycerol pH 7.3.  
Aliquoting is unnecessary for -20°C storage

\*\*\* 20ul sizes contain 0.1% BSA

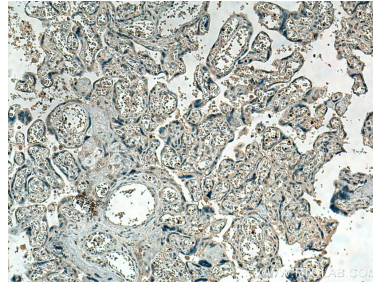
For technical support and original validation data for this product please contact:  
T: 1 (888) 4PTGLAB (1-888-478-4522) (toll free in USA), or 1(312) 455-8498 (outside USA)  
E: proteintech@ptglab.com  
W: ptglab.com

This product is exclusively available under Proteintech Group brand and is not available to purchase from any other manufacturer.

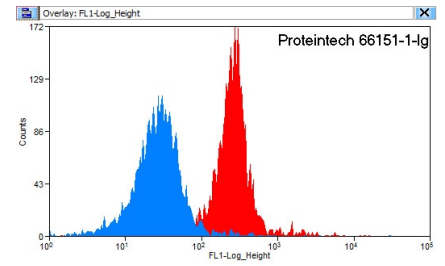
## Selected Validation Data



K-562 cells were subjected to SDS PAGE followed by western blot with 66151-1-Ig (HBE1-Specific antibody) at dilution of 1:500 incubated at room temperature for 1.5 hours.



Immunohistochemical analysis of paraffin-embedded human placenta tissue slide using 66151-1-Ig (HBE1-Specific antibody) at dilution of 1:1000 (under 10x Lens). Heat mediated antigen retrieval with Tris-EDTA buffer (pH 9.0).



$1 \times 10^6$  K-562 cells were stained with 0.2 ug Anti-Human HBE1-Specific (66151-1-Ig, Clone: 2C11G6) and CoraLite488-Conjugated AffiniPure Goat Anti-Mouse IgG(H+L) at dilution 1:1500 (red), or stained with 0.2 ug isotype control and CoraLite488-Conjugated AffiniPure Goat Anti-Mouse IgG(H+L) at dilution 1:1500 (blue). Cells were fixed with 90% MeOH.