

Complement factor B Monoclonal antibody

Catalog Number: 66154-1-Ig

Basic Information

Catalog Number: 66154-1-Ig	GenBank Accession Number: BC007990	Purification Method: Caprylic acid/ammonium sulfate precipitation
Size: 150ul , Concentration: 1000 ug/ml by Bradford method using BSA as the standard;	GeneID (NCBI): 629	CloneNo.: 8D2B6
Source: Mouse	UNIPROT ID: P00751	Recommended Dilutions: WB: 1:500-1:2000 IHC: 1:20-1:200 IF-P: 1:200-1:800
Isotype: IgM	Full Name: complement factor B	
Immunogen Catalog Number: AG19107	Calculated MW: 86 kDa	
	Observed MW: 93 kDa	

Applications

Tested Applications: WB, IHC, IF-P, ELISA	Positive Controls:
Species Specificity: human	WB : human blood tissue,
Note-IHC: suggested antigen retrieval with TE buffer pH 9.0; (*) Alternatively, antigen retrieval may be performed with citrate buffer pH 6.0	IHC : human liver tissue,
	IF-P : human liver tissue,

Background Information

Complement factor B (CFB) is a component of the alternative pathway of complement activation. Complement factor B is cleaved into Ba and Bb by factor D in the presence of C3b. The active subunit Bb is a serine protease which associates with C3b to form the alternative pathway C3 convertase. Bb is involved in the proliferation of preactivated B lymphocytes, while Ba inhibits their proliferation.

Storage

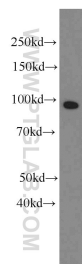
Storage:
Store at -20°C. Stable for one year after shipment.
Storage Buffer:
PBS with 0.02% sodium azide and 50% glycerol, pH7.3
Aliquoting is unnecessary for -20°C storage

*** 20ul sizes contain 0.1% BSA

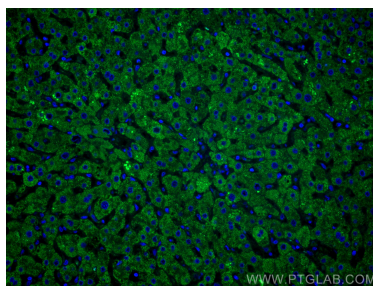
For technical support and original validation data for this product please contact:
T: 1 (888) 4PTGLAB (1-888-478-4522) (toll free in USA), or 1(312) 455-8498 (outside USA)
E: proteintech@ptglab.com
W: ptglab.com

This product is exclusively available under Proteintech Group brand and is not available to purchase from any other manufacturer.

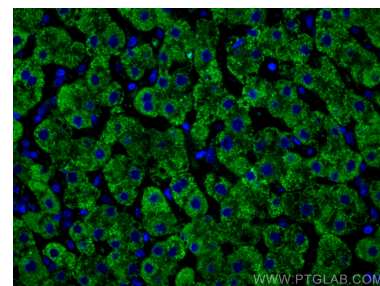
Selected Validation Data



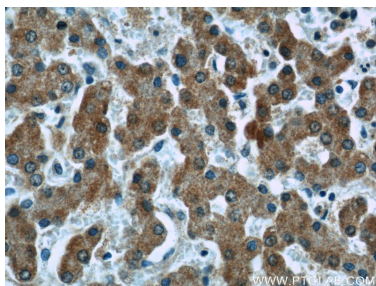
human blood were subjected to SDS PAGE followed by western blot with 66154-1-Ig (Complement factor B antibody) at dilution of 1:1000 incubated at room temperature for 1.5 hours.



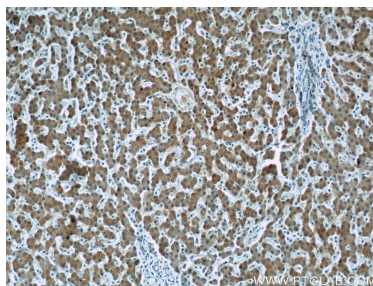
Immunofluorescent analysis of (4% PFA) fixed human liver tissue using Complement factor B antibody (66154-1-Ig, Clone: 8D2B6) at dilution of 1:400 and CoraLite®488-Conjugated AffiniPure Goat Anti-Mouse IgG(H+L).



Immunofluorescent analysis of (4% PFA) fixed human liver tissue using Complement factor B antibody (66154-1-Ig, Clone: 8D2B6) at dilution of 1:400 and CoraLite®488-Conjugated AffiniPure Goat Anti-Mouse IgG(H+L).



Immunohistochemical analysis of paraffin-embedded human liver tissue slide using 66154-1-Ig (Complement factor B antibody) at dilution of 1:50 (under 40x lens).



Immunohistochemical analysis of paraffin-embedded human liver tissue slide using 66154-1-Ig (Complement factor B antibody) at dilution of 1:50 (under 10x lens).