

For Research Use Only

# NAPRT1 Monoclonal antibody

Catalog Number: 66159-1-Ig

Featured Product

6 Publications



## Basic Information

Catalog Number:

66159-1-Ig

Size:

150ul, Concentration: 2000 ug/ml by Nanodrop;

Source:

Mouse

Isotype:

IgG2a

Immunogen Catalog Number:

AG4265

GenBank Accession Number:

BC032466

GeneID (NCBI):

93100

UNIPROT ID:

Q6XQN6

Full Name:

nicotinate phosphoribosyltransferase domain containing 1

Calculated MW:

514 aa, 55 kDa

Observed MW:

51 kDa

Purification Method:

Protein A purification

CloneNo.:

5D8H10

Recommended Dilutions:

WB 1:5000-1:50000

IHC 1:20-1:200

IF/ICC 1:100-1:500

## Applications

Tested Applications:

WB, IHC, IF/ICC, ELISA

Cited Applications:

WB

Species Specificity:

human, mouse

Cited Species:

human

**Note-IHC: suggested antigen retrieval with TE buffer pH 9.0; (\*) Alternatively, antigen retrieval may be performed with citrate buffer pH 6.0**

Positive Controls:

WB : THP-1 cells, HEK-293 cells, Jurkat cells, HepG2 cells, LNCaP cells, HeLa cells, K-562 cells

IHC : human small intestine tissue,

IF/ICC : HeLa cells,

## Background Information

Nicotinic acid (NA) is a coenzyme in cellular redox reactions, and is an essential component of metabolic pathways in all living cells. NAPRT1 (Nicotinate phosphoribosyltransferase) is essential for increasing cellular NAD levels and, thus, to prevent oxidative stress of cells. NAPRT1 converts Nicotinic acid (NA; niacin) to NA mononucleotide (NaMN), which is then converted to NA adenine dinucleotide (NaAD), and finally to nicotinamide adenine dinucleotide (NAD).

## Notable Publications

Author	Pubmed ID	Journal	Application
Antonella Managò	31511522	Nat Commun	WB
Nathan R Fons	31439867	Nat Commun	WB
Katelyn J Noronha	38949523	Mol Cancer Res	WB

## Storage

Storage:

Store at -20°C. Stable for one year after shipment.

Storage Buffer:

PBS with 0.02% sodium azide and 50% glycerol pH 7.3.

Aliquoting is unnecessary for -20°C storage

\*\*\* 20ul sizes contain 0.1% BSA

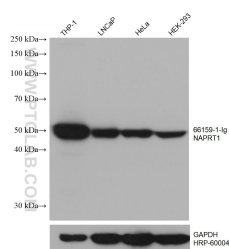
For technical support and original validation data for this product please contact:

T: 1 (888) 4PTGLAB (1-888-478-4522) (toll free in USA), or 1(312) 455-8498 (outside USA)

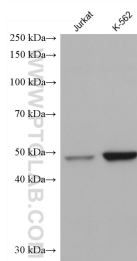
E: [proteintech@ptglab.com](mailto:proteintech@ptglab.com)  
W: [ptglab.com](http://ptglab.com)

This product is exclusively available under Proteintech Group brand and is not available to purchase from any other manufacturer.

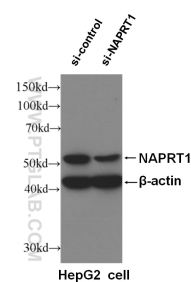
## Selected Validation Data



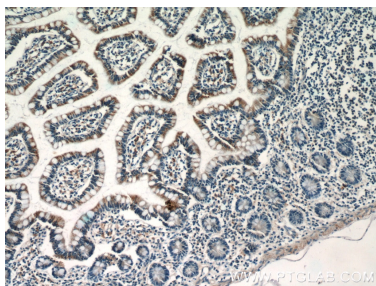
Various lysates were subjected to SDS PAGE followed by western blot with 66159-1-Ig (NAPRT1 antibody) at dilution of 1:20000 incubated at room temperature for 1.5 hours. The membrane was stripped and reblotted with HRP-conjugated GAPDH Monoclonal antibody (HRP-60004) as loading control.



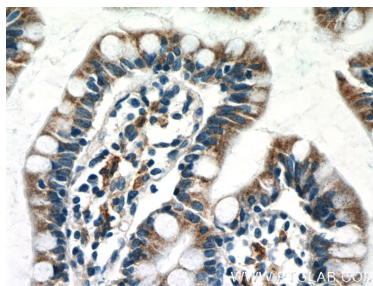
Various lysates were subjected to SDS PAGE followed by western blot with 66159-1-Ig (NAPRT1 antibody) at dilution of 1:20000 incubated at room temperature for 1.5 hours.



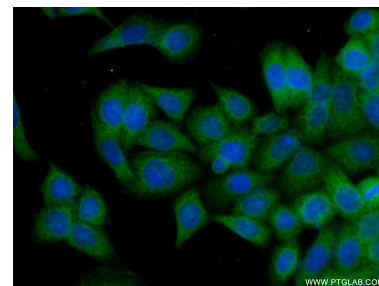
WB result of NAPRT1 antibody (66159-1-Ig, 1:6000) with si-Control and si-NAPRT1 transfected HepG2 cells.



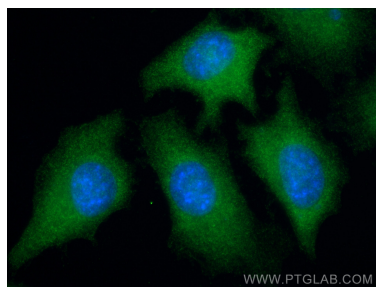
Immunohistochemical analysis of paraffin-embedded human small intestine tissue slide using 66159-1-Ig (NAPRT1 Antibody) at dilution of 1:50 (under 10x lens).



Immunohistochemical analysis of paraffin-embedded human small intestine tissue slide using 66159-1-Ig (NAPRT1 Antibody) at dilution of 1:50 (under 40x lens).



Immunofluorescent analysis of (-20°C Ethanol) fixed HeLa cells using 66159-1-Ig (NAPRT1 antibody) at dilution of 1:100 and Alexa Fluor 488-conjugated AffiniPure Goat Anti-Mouse IgG(H+L).



Immunofluorescent analysis of (-20°C Methanol) fixed HeLa cells using NAPRT1 antibody (66159-1-Ig, Clone: 5D8H10) at dilution of 1:400 and CoraLite®488-Conjugated Goat Anti-Mouse IgG(H+L) (SA00013-1).