

For Research Use Only

BMI1 Monoclonal antibody

Catalog Number: 66161-1-Ig

Featured Product

14 Publications



Basic Information

Catalog Number:

66161-1-Ig

Size:

150ul, Concentration: 573 ug/ml by Bradford method using BSA as the standard;

Source:

Mouse

Isotype:

IgG2b

Immunogen Catalog Number:

AG21284

GenBank Accession Number:

BC011652

GeneID (NCBI):

648

UNIPROT ID:

P35226

Full Name:

BMI1 polycomb ring finger oncogene

Calculated MW:

37 kDa

Observed MW:

37-43 kDa

Purification Method:

Protein A purification

CloneNo.:

2E10A11

Recommended Dilutions:

WB 1:1000-1:4000

IP 0.5-4.0 ug for 1.0-3.0 mg of total protein lysate

IHC 1:50-1:500

IF/ICC 1:500-1:2000

Applications

Tested Applications:

WB, IHC, IF/ICC, IP, ELISA

Cited Applications:

WB, IHC, IF

Species Specificity:

human, mouse, monkey

Cited Species:

human, mouse

Note-IHC: suggested antigen retrieval with TE buffer pH 9.0; (*) Alternatively, antigen retrieval may be performed with citrate buffer pH 6.0

Positive Controls:

WB : PC-12 cells, HT-1080 cells, U2OS cells, U-937 cells

IP : HEK-293 cells,

IHC : human breast cancer tissue, human colon cancer, human lymphoma tissue

IF/ICC : HEK-293 cells, COS-7 cells

Background Information

BMI-1 is one of polycomb group genes, which together with Ring1 strongly enhances the E3 ubiquitin ligase activity of the Ring2 catalytic subunit. Bmi1 plays an important role in the regulation of cell proliferation and senescence through repression of the p16Ink4a and p19Arf genes and is required for maintenance of adult hematopoietic and neural stem cells. The antibody reacts with the 37kd BMI1 protein.

Notable Publications

Author	Pubmed ID	Journal	Application
Anindya Dey	29158468	Mol Cancer Ther	WB,IHC
Guan-Zhong Qiu	29788550	Cancer Sci	WB,IF
Mingzhu Tan	34391775	Exp Cell Res	WB,IF

Storage

Storage:

Store at -20°C. Stable for one year after shipment.

Storage Buffer:

PBS with 0.02% sodium azide and 50% glycerol pH 7.3.

Aliquoting is unnecessary for -20°C storage

*** 20ul sizes contain 0.1% BSA

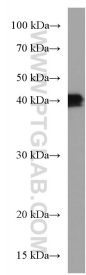
For technical support and original validation data for this product please contact:

T: 1 (888) 4PTGLAB (1-888-478-4522) (toll free in USA), or 1(312) 455-8498 (outside USA)

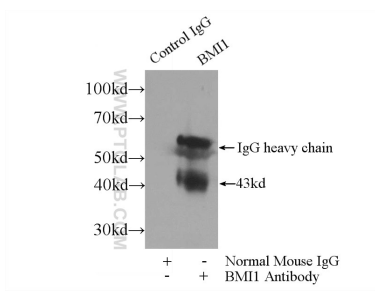
E: proteintech@ptglab.com
W: ptglab.com

This product is exclusively available under Proteintech Group brand and is not available to purchase from any other manufacturer.

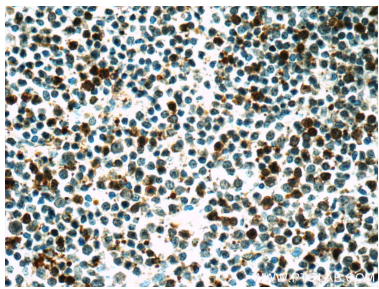
Selected Validation Data



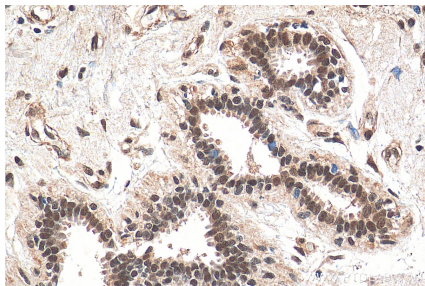
PC-12 cells were subjected to SDS PAGE followed by western blot with 66161-1-Ig (BMI 1 antibody) at dilution of 1:1500 incubated at room temperature for 1.5 hours.



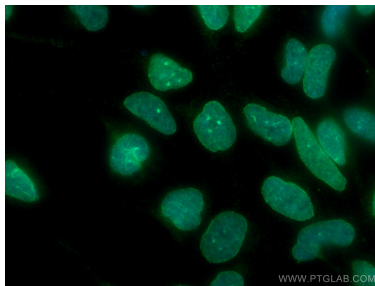
IP result of anti-BMI1 (IP:66161-1-Ig, 3ug; Detection:66161-1-Ig 1:1000) with HEK-293 cells lysate 1800ug.



Immunohistochemical analysis of paraffin-embedded human lymphoma tissue slide using 66161-1-Ig (BMI 1 Antibody) at dilution of 1:50 under 40x lens.



Immunohistochemical analysis of paraffin-embedded human breast cancer tissue slide using 66161-1-Ig (BMI 1 antibody) at dilution of 1:200 (under 40x lens). Heat mediated antigen retrieval with Tris-EDTA buffer (pH 9.0).



Immunofluorescent analysis of (4% PFA) fixed HEK-293 cells using BMI 1 antibody (66161-1-Ig, Clone: 2E10A11) at dilution of 1:1000 and CoraLite®488-Conjugated AffiniPure Goat Anti-Mouse IgG(H+L).