

For Research Use Only

# Claudin 18 Monoclonal antibody

Catalog Number: 66167-1-Ig 5 Publications



## Basic Information

<b>Catalog Number:</b> 66167-1-Ig	<b>GenBank Accession Number:</b> BC146668	<b>Purification Method:</b> Protein A purification
<b>Size:</b> 150ul , Concentration: 1600 ug/ml by Nanodrop and 1000 ug/ml by Bradford method using BSA as the standard;	<b>GeneID (NCBI):</b> 51208	<b>CloneNo.:</b> 5G7F2
<b>Source:</b> Mouse	<b>UNIPROT ID:</b> P56856	<b>Recommended Dilutions:</b> IP: 0.5-4.0 ug for 1.0-3.0 mg of total protein lysate IHC: 1:500-1:2000
<b>Isotype:</b> IgG2a	<b>Full Name:</b> claudin 18	
<b>Immunogen Catalog Number:</b> AG15517	<b>Calculated MW:</b> 261 aa, 28 kDa	
	<b>Observed MW:</b> 29 kDa	

## Applications

<b>Tested Applications:</b> IHC, IP, ELISA	<b>Positive Controls:</b> IP : mouse stomach tissue,
<b>Cited Applications:</b> WB, IHC, IF	<b>IHC :</b> human pancreas cancer tissue, human ovary tumor tissue, human stomach tissue
<b>Species Specificity:</b> human, mouse	
<b>Cited Species:</b> human, mouse	
<b>Note-IHC: suggested antigen retrieval with TE buffer pH 9.0; (*) Alternatively, antigen retrieval may be performed with citrate buffer pH 6.0</b>	

## Background Information

Claudin 18 (CLDN18) belongs to the large claudin family of proteins, which are tetraspan transmembrane proteins of tight junctions (PMID: 11585919; 18036336). Claudins exhibit specific patterns of expression in different tissues (PMID: 15447685). CLDN18 is specifically expressed in the stomach and lung. CLDN18 has two alternatively spliced variants, CLDN18.1 and CLDN18.2. CLDN18.2 is a highly selective gastric lineage marker that determines the gastric phenotype in a neoplastic condition, whereas CLDN18.1 is lung specific (PMID: 11585919; 21832145). Altered CLDN18 expression has been reported in various human malignancies, including gastric cancer, lung adenocarcinoma, and pancreatic neoplasm (PMID: 17459057; 22076167; 21832145). This antibody can recognize both CLDN18.1 and CLDN18.2.

## Notable Publications

Author	Pubmed ID	Journal	Application
Nobuya Kurabe	27190696	World J Gastrointest Pathophysiol	
Bailey A Bye	40227649	Cancers (Basel)	IF
Shuai Zhang	39659940	Am J Cancer Res	WB,IHC,IF

## Storage

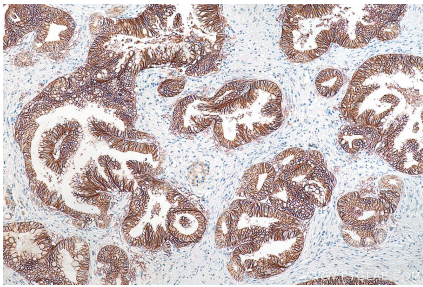
**Storage:**  
Store at -20°C. Stable for one year after shipment.  
**Storage Buffer:**  
PBS with 0.02% sodium azide and 50% glycerol, pH7.3  
**Aliquoting is unnecessary for -20°C storage**

\*\*\* 20ul sizes contain 0.1% BSA

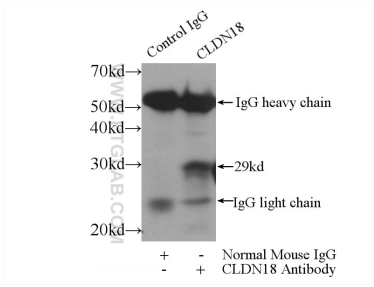
For technical support and original validation data for this product please contact:  
T: 1 (888) 4PTGLAB (1-888-478-4522) (toll free in USA), or 1(312) 455-8498 (outside USA)  
E: proteintech@ptglab.com  
W: ptglab.com

This product is exclusively available under Proteintech Group brand and is not available to purchase from any other manufacturer.

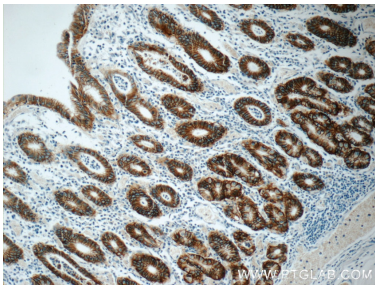
Selected Validation Data



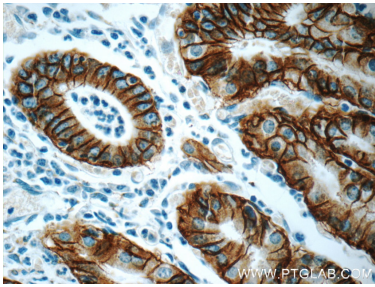
Immunohistochemical analysis of paraffin-embedded human pancreas cancer tissue slide using 66167-1-Ig (Claudin 18 antibody) at dilution of 1:1000 (under 10x lens). Heat mediated antigen retrieval with Tris-EDTA buffer (pH 9.0).



IP result of anti-Claudin 18 (IP:66167-1-Ig, 3ug; Detection:66167-1-Ig 1:300) with mouse stomach tissue lysate 4000ug.



Immunohistochemical analysis of paraffin-embedded human stomach tissue slide using 66167-1-Ig (Claudin 18 antibody at dilution of 1:1000).



Immunohistochemical analysis of paraffin-embedded human stomach tissue slide using 66167-1-Ig (Claudin 18 antibody at dilution of 1:1000).