

For Research Use Only

KLF15 Monoclonal antibody

Catalog Number: 66185-1-Ig

Featured Product

3 Publications



Basic Information

Catalog Number:

66185-1-Ig

Size:

150ul, Concentration: 1600 ug/ml by Nanodrop and 1000 ug/ml by Bradford method using BSA as the standard;

Source:

Mouse

Isotype:

IgM

Immunogen Catalog Number:

AG4864

GenBank Accession Number:

BC036733

GeneID (NCBI):

28999

UNIPROT ID:

Q9UIH9

Full Name:

Kruppel-like factor 15

Calculated MW:

416 aa, 44 kDa

Observed MW:

44-55 kDa

Purification Method:

Protein A purification

CloneNo.:

2B8G9

Recommended Dilutions:

WB 1:1000-1:4000

IF/ICC 1:200-1:800

Applications

Tested Applications:

WB, IF/ICC, ELISA

Cited Applications:

WB

Species Specificity:

human, mouse, rat

Cited Species:

human, mouse

Positive Controls:

WB : human skeletal muscle tissue,

IF/ICC : HepG2 cells,

Background Information

KLF15, a kidney-enriched Krüppel-like zinc finger-containing transcription factors, is a transcriptional activator that binds the CLCNKA promoter. The nuclear protein KLF15, is expressed primarily in liver, heart, skeletal muscle and kidney tissues but is not detected in lymphoid tissues or bone marrow. It is an important regulator of GLUT4 in both adipose and muscle tissues.(PMID:10982849,PMID:16615998).

Notable Publications

Author	Pubmed ID	Journal	Application
Wen-Shuai Tang	34233190	Cell Rep	WB
Shun He	33869197	Front Cell Dev Biol	WB
Xianping Shi	33080033	Nucleic Acids Res	WB

Storage

Storage:

Store at -20°C. Stable for one year after shipment.

Storage Buffer:

PBS with 0.02% sodium azide and 50% glycerol pH 7.3.

Aliquoting is unnecessary for -20°C storage

*** 20ul sizes contain 0.1% BSA

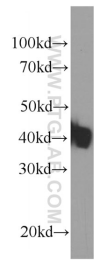
For technical support and original validation data for this product please contact:

T: 1 (888) 4PTGLAB (1-888-478-4522) (toll free in USA), or 1(312) 455-8498 (outside USA)

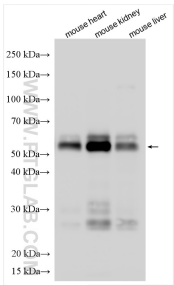
E: proteintech@ptglab.com
W: ptglab.com

This product is exclusively available under Proteintech Group brand and is not available to purchase from any other manufacturer.

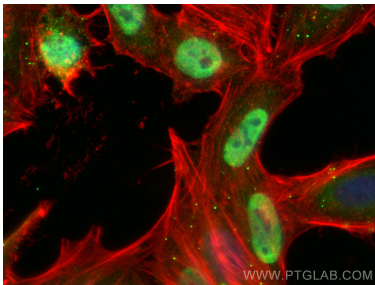
Selected Validation Data



human skeletal muscle tissue were subjected to SDS PAGE followed by western blot with 66185-1-Ig (KLF15 Antibody) at dilution of 1:2000 incubated at room temperature for 1.5 hours.



Various lysates were subjected to SDS PAGE followed by western blot with 66185-1-Ig (KLF15 antibody) at dilution of 1:1500 incubated at room temperature for 1.5 hours.



Immunofluorescent analysis of (4% PFA) fixed HepG2 cells using KLF15 antibody (66185-1-Ig, Clone: 2B8G9) at dilution of 1:400 and CoraLite®488-Conjugated AffiniPure Goat Anti-Mouse IgG(H+L) (SA00013-1), CL594-phalloidin (red).