

For Research Use Only

MCM2 Monoclonal antibody

Catalog Number: 66204-1-Ig

Featured Product



Basic Information

Catalog Number:

66204-1-Ig

Size:

150ul, Concentration: 800 ug/ml by Bradford method using BSA as the standard;

Source:

Mouse

Isotype:

IgG1

Immunogen Catalog Number:

AG0798

GenBank Accession Number:

BC007670

GeneID (NCBI):

4171

UNIPROT ID:

P49736

Full Name:

minichromosome maintenance complex component 2

Calculated MW:

102 kDa

Observed MW:

120-125 kDa

Purification Method:

Protein G purification

CloneNo.:

1F4D10

Recommended Dilutions:

WB 1:5000-1:50000

IHC 1:1000-1:4000

IF/ICC 1:200-1:800

Applications

Tested Applications:

WB, IHC, IF/ICC, ELISA

Species Specificity:

human, mouse, rat

Note-IHC: suggested antigen retrieval with *TE buffer pH 9.0*; (*) Alternatively, antigen retrieval may be performed with *citrate buffer pH 6.0*

Positive Controls:

WB : HeLa cells, K-562 cells, HEK-293 cells, A431 cells, 4T1 cells, A549 cells, Jurkat cells, HSC-T6 cells, NIH/3T3 cells

IHC : Human tonsillitis tissue, human prostate cancer tissue

IF/ICC : MCF-7 cells,

Storage

Storage:

Store at -20°C. Stable for one year after shipment.

Storage Buffer:

PBS with 0.02% sodium azide and 50% glycerol pH 7.3.

Aliquoting is unnecessary for -20°C storage

*** 20ul sizes contain 0.1% BSA

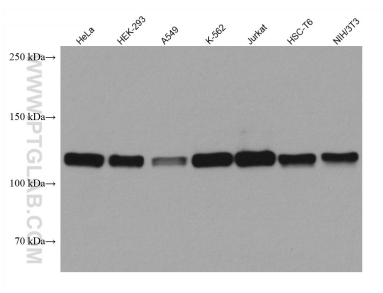
For technical support and original validation data for this product please contact:

T: 1 (888) 4PTGLAB (1-888-478-4522) (toll free in USA), or 1(312) 455-8498 (outside USA)

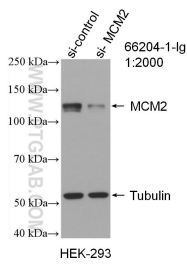
E: proteintech@ptglab.com
W: ptglab.com

This product is exclusively available under Proteintech Group brand and is not available to purchase from any other manufacturer.

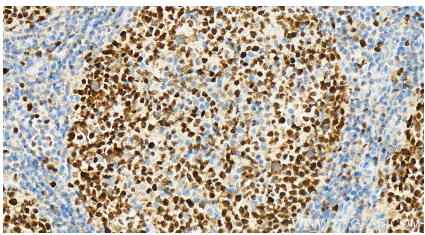
Selected Validation Data



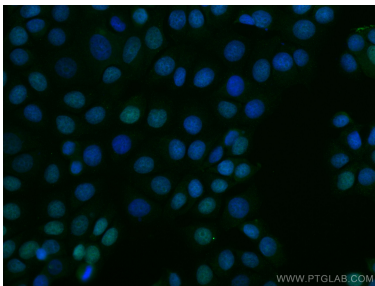
Various lysates were subjected to SDS PAGE followed by western blot with 66204-1-Ig (MCM2 antibody) at dilution of 1:10000 incubated at room temperature for 1.5 hours.



WB result of MCM2 antibody (66204-1-Ig; 1:2000; incubated at room temperature for 1.5 hours) with sh-Control and sh-MCM2 transfected HEK-293 cells.



Immunohistochemical analysis of paraffin-embedded Human tonsillitis tissue slide using 66204-1-Ig (MCM2 antibody) at dilution of 1:2000 (under 20x lens).



Immunofluorescent analysis of (4% PFA) fixed MCF-7 cells using MCM2 antibody (66204-1-Ig, Clone: 1F4D10) at dilution of 1:400 and CoraLite®488-Conjugated AffiniPure Goat Anti-Mouse IgG(H+L).