

For Research Use Only

Beta-2-Microglobulin Monoclonal antibody

Catalog Number: 66207-1-Ig **3 Publications**



Basic Information

Catalog Number: 66207-1-Ig	GenBank Accession Number: BC032589	Purification Method: Protein A purification
Size: 150ul , Concentration: 1000 ug/ml by Nanodrop;	GeneID (NCBI): 567	CloneNo.: 1C3B7
Source: Mouse	ENSEMBL Gene ID: ENSG00000166710	Recommended Dilutions: WB 1:2000-1:10000 IHC 1:250-1:1000 IF-P 1:200-1:800
Isotype: IgG2b	UNIPROT ID: P61769	
	Full Name: beta-2-microglobulin	
	Calculated MW: 14 kDa	
	Observed MW: 13 kDa	

Applications

Tested Applications: WB, IHC, IF-P, ELISA	Positive Controls: WB : A431 cells, Raji cells, LNCaP cells
Cited Applications: WB	IHC : human prostate cancer tissue, human renal cell carcinoma tissue
Species Specificity: human	IF-P : human prostate cancer tissue,
Cited Species: human, mouse, monkey	
Note-IHC: suggested antigen retrieval with TE buffer pH 9.0; (*) Alternatively, antigen retrieval may be performed with citrate buffer pH 6.0	

Background Information

Beta-2-microglobulin (B2M) is a component of MHC class I molecules, which are present on the surface of nearly all nucleated cells. It can be found in body fluids under physiologic conditions as a result of shedding from cell surfaces or intracellular release. B2M has various biological functions, including antigen presentation. Investigations reveal that increased synthesis and release of B2M are present in several malignant diseases.

Notable Publications

Author	Pubmed ID	Journal	Application
Kang Yang	39651859	J Virol	WB
Jiaqi Wu	39024058	J Agric Food Chem	WB
Jihua Tian	38355278	J Immunother Cancer	WB

Storage

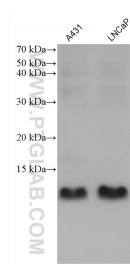
Storage:
Store at -20°C. Stable for one year after shipment.
Storage Buffer:
PBS with 0.02% sodium azide and 50% glycerol pH 7.3.
Aliquoting is unnecessary for -20°C storage

*** 20ul sizes contain 0.1% BSA

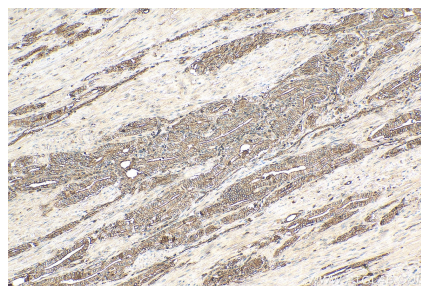
For technical support and original validation data for this product please contact:
T: 1 (888) 4PTGLAB (1-888-478-4522) (toll free in USA), or 1(312) 455-8498 (outside USA)
E: proteintech@ptglab.com
W: ptglab.com

This product is exclusively available under Proteintech Group brand and is not available to purchase from any other manufacturer.

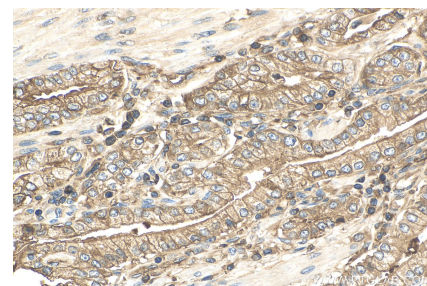
Selected Validation Data



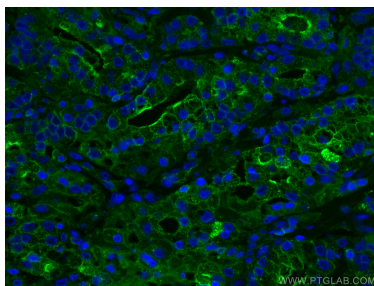
Various lysates were subjected to SDS PAGE followed by western blot with 66207-1-Ig (Beta-2-Microglobulin antibody) at dilution of 1:5000 incubated at room temperature for 1.5 hours.



Immunohistochemical analysis of paraffin-embedded human prostate cancer tissue slide using 66207-1-Ig (Beta-2-Microglobulin antibody) at dilution of 1:500 (under 10x lens). Heat mediated antigen retrieval with Tris-EDTA buffer (pH 9.0).



Immunohistochemical analysis of paraffin-embedded human prostate cancer tissue slide using 66207-1-Ig (Beta-2-Microglobulin antibody) at dilution of 1:500 (under 40x lens). Heat mediated antigen retrieval with Tris-EDTA buffer (pH 9.0).



Immunofluorescent analysis of (4% PFA) fixed human prostate cancer tissue using Beta-2-Microglobulin antibody (66207-1-Ig, Clone: 1C3B7) at dilution of 1:400 and CoraLite®488-Conjugated Goat Anti-Mouse IgG(H+L).