

For Research Use Only

MYH2-specific Monoclonal antibody



Catalog Number: 66212-1-Ig **2 Publications**

Basic Information

Catalog Number: 66212-1-Ig	GenBank Accession Number: NM_017534	Purification Method: Protein A purification
Size: 150ul , Concentration: 1800 µg/ml by Nanodrop and 900 µg/ml by Bradford method using BSA as the standard;	GeneID (NCBI): 4620	CloneNo.: 1F1B6
Source: Mouse	Full Name: myosin, heavy chain 2, skeletal muscle, adult	Recommended Dilutions: WB 1:5000-1:10000 IHC 1:2000-1:8000
Isotype: IgG2b	Calculated MW: 223 kDa	
	Observed MW: 200 kDa	

Applications

Tested Applications:
IHC, WB, ELISA

Cited Applications:
WB

Species Specificity:
human, mouse

Note-IHC: suggested antigen retrieval with TE buffer pH 9.0; (*) Alternatively, antigen retrieval may be performed with citrate buffer pH 6.0

Positive Controls:

WB : human skeletal muscle tissue,

IHC : mouse heart tissue, human skeletal muscle tissue, rat skeletal muscle tissue, mouse skeletal muscle tissue, mouse tongue tissue

Background Information

MYH2 (Myosin II) is a member of the class II or conventional myosin heavy chains. Myosin II was first isolated from muscle but is also found in non muscle cells, and it is especially enriched in highly motile cell types such as amoebae. It forms bipolar filaments that interact with actin filaments to produce contraction. And it is the motor protein that generates force to drive muscle contraction. Functions in skeletal muscle contraction. The antibody is specific to MYH2, will not bind other myosins. It is a skeletal muscle specific antibody.

Notable Publications

Author	Pubmed ID	Journal	Application
Wenliang Zhang	34580406	Sci Rep	WB
Luchu Zhang	29224337	J Agric Food Chem	WB

Storage

Storage:

Store at -20°C. Stable for one year after shipment.

Storage Buffer:

PBS with 0.02% sodium azide and 50% glycerol pH 7.3.

Aliquoting is unnecessary for -20°C storage

***** 20ul sizes contain 0.1% BSA**

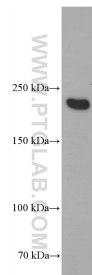
For technical support and original validation data for this product please contact:

T: 1 (888) 4PTGLAB (1-888-478-4522) (toll free in USA), or 1(312) 455-8498 (outside USA)

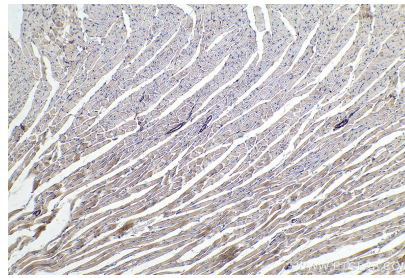
E: proteintech@ptglab.com
W: ptglab.com

This product is exclusively available under Proteintech Group brand and is not available to purchase from any other manufacturer.

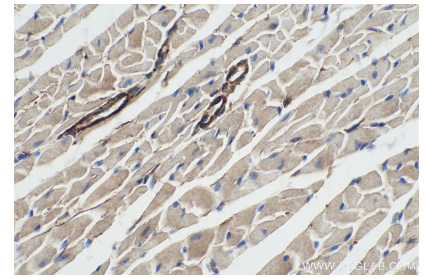
Selected Validation Data



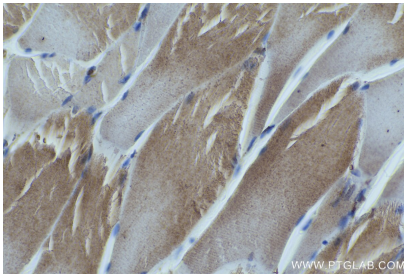
human skeletal muscle tissue were subjected to SDS PAGE followed by western blot with 66212-1-Ig (Myosin 2a antibody) at dilution of 1:100000 incubated at room temperature for 1.5 hours.



Immunohistochemical analysis of paraffin-embedded mouse heart tissue slide using 66212-1-Ig (MYH2-specific antibody) at dilution of 1:4000 (under 10x lens). Heat mediated antigen retrieval with Tris-EDTA buffer (pH 9.0).



Immunohistochemical analysis of paraffin-embedded mouse heart tissue slide using 66212-1-Ig (MYH2-specific antibody) at dilution of 1:4000 (under 40x lens). Heat mediated antigen retrieval with Tris-EDTA buffer (pH 9.0).



Immunohistochemical analysis of paraffin-embedded rat skeletal muscle tissue slide using 66212-1-Ig (MYH2-specific antibody) at dilution of 1:4000 (under 40x lens). Heat mediated antigen retrieval with Tris-EDTA buffer (pH 9.0).