

For Research Use Only

Serpin E1/PAI-1 Monoclonal antibody

Catalog Number: 66261-1-Ig **26 Publications**



Basic Information

Catalog Number: 66261-1-Ig	GenBank Accession Number: BC010860	Purification Method: Protein G purification
Size: 150ul , Concentration: 2000 ug/ml by Nanodrop;	GeneID (NCBI): 5054	CloneNo.: 1H4A5
Source: Mouse	UNIPROT ID: P05121	Recommended Dilutions: WB: 1:5000-1:50000 IHC: 1:50-1:500 IF/ICC: 1:200-1:800
Isotype: IgG1	Full Name: serpin peptidase inhibitor, clade E (nexin, plasminogen activator inhibitor type 1), member 1	
Immunogen Catalog Number: AG22411	Calculated MW: 402 aa, 45 kDa	
	Observed MW: 45-50 kDa	

Applications

Tested Applications: WB, IHC, IF/ICC, ELISA	Positive Controls: WB : human peripheral blood platelets, pig liver tissue, pig serum, HuH-7 cells, U-251 cells, SH-SY5Y cells IHC : human kidney tissue, mouse lung tissue IF/ICC : HepG2 cells,
Cited Applications: WB, IHC, IF	
Species Specificity: human, mouse, pig	
Cited Species: human, mouse, rat, pig	
Note-IHC: suggested antigen retrieval with TE buffer pH 9.0; (*) Alternatively, antigen retrieval may be performed with citrate buffer pH 6.0	

Background Information

SERPINE1, also named Plasminogen activator inhibitor type 1 (PAI-1), is a member of the serine protease inhibitor (SERPIN) superfamily. PAI-1 is the principal inhibitor of tissue plasminogen activator (tPA) and uPA, and hence is an inhibitor of fibrinolysis. Defects in this gene are the cause of plasminogen activator inhibitor-1 deficiency (PAI-1 deficiency), and high concentrations of the gene product are associated with thrombophilia. The mature 379-residue protein had a calculated unglycosylated molecular mass of 42.7 kD. Three putative glycosylation sites were found.

Notable Publications

Author	Pubmed ID	Journal	Application
Tong Lin	33002827	Phytomedicine	WB
Xinh-Xinh Nguyen	34830489	Int J Mol Sci	WB
Mingming Han	34003736	Am J Respir Cell Mol Biol	WB

Storage

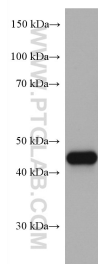
Storage:
Store at -20°C. Stable for one year after shipment.
Storage Buffer:
PBS with 0.02% sodium azide and 50% glycerol, pH7.3
Aliquoting is unnecessary for -20°C storage

*** 20ul sizes contain 0.1% BSA

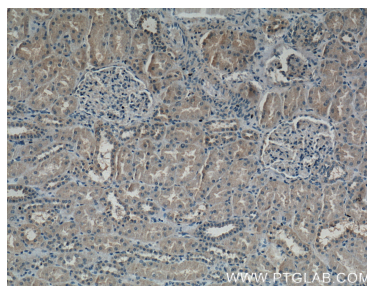
For technical support and original validation data for this product please contact:
T: 1 (888) 4PTGLAB (1-888-478-4522) (toll free in USA), or 1(312) 455-8498 (outside USA)
E: proteintech@ptglab.com
W: ptglab.com

This product is exclusively available under Proteintech Group brand and is not available to purchase from any other manufacturer.

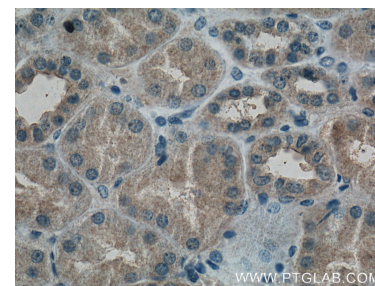
Selected Validation Data



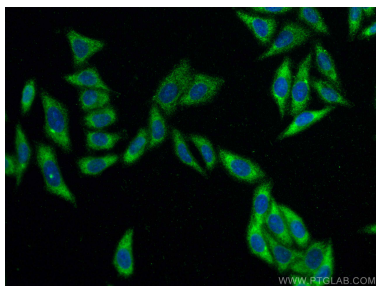
human peripheral blood platelets were subjected to SDS PAGE followed by western blot with 66261-1-Ig (PAI-1 antibody) at dilution of 1:10000 incubated at room temperature for 1.5 hours.



Immunohistochemical analysis of paraffin-embedded human kidney tissue slide using 66261-1-Ig (PAI-1 antibody at dilution of 1:200 (under 10x lens).



Immunohistochemical analysis of paraffin-embedded human kidney tissue slide using 66261-1-Ig (PAI-1 antibody at dilution of 1:200 (under 40x lens).



Immunofluorescent analysis of (-20°C Ethanol) fixed HepG2 cells using PAI-1 antibody (66261-1-Ig, Clone: 1H4A5) at dilution of 1:400 and CoraLite®488-Conjugated AffiniPure Goat Anti-Mouse IgG(H+L).