

For Research Use Only

Mouse IgG1 isotype control Monoclonal antibody



Catalog Number: 66360-1-Ig

22 Publications

Basic Information

Catalog Number:

66360-1-Ig

GenBank Accession Number:

GeneID (NCBI):

Purification Method:

Protein G purification

Size:

150ul , Concentration: 1000 ug/ml by Nanodrop;

Full Name:

CloneNo.:

1F8D3

Source:

Mouse

Recommended Dilutions:

WB: 1:500-1:2000

Isotype:

IgG1

Applications

Tested Applications:

WB, ELISA

Positive Controls:

WB : ,

Cited Applications:

WB, IHC, IF, IP, CoIP, RIP, Neutralization

Species Specificity:

megathura crenulata

Cited Species:

human

Background Information

This antibody is used as the isotype control of mouse IgG1 (Kappa). It can be used as the isotype control in Flow Cytometry, Immuno-Precipitation and other experiments. The immunogen of this antibody is Keyhole Limpet Hemocyanin (KLH).

Notable Publications

Author	Pubmed ID	Journal	Application
Chujie Ding	35913801	FASEB J	CoIP
Yuting Yang	34242624	Exp Cell Res	IP
Tomohiro Kawasumi	34989246	Am J Rhinol Allergy	IHC

Storage

Storage:

Store at -20°C. Stable for one year after shipment.

Storage Buffer:

PBS with 0.02% sodium azide and 50% glycerol, pH7.3

Aliquoting is unnecessary for -20°C storage

*** 20ul sizes contain 0.1% BSA

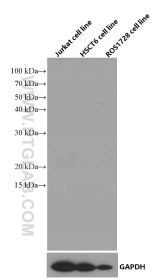
For technical support and original validation data for this product please contact:

T: 1 (888) 4PTGLAB (1-888-478-4522) (toll free in USA), or 1(312) 455-8498 (outside USA)

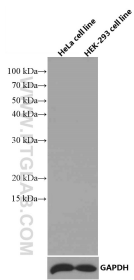
E: proteintech@ptglab.com
W: ptglab.com

This product is exclusively available under Proteintech Group brand and is not available to purchase from any other manufacturer.

Selected Validation Data



Various lysates were subjected to SDS PAGE followed by western blot with 66360-1-Ig (Mouse IgG1 isotype control antibody) at dilution of 1:1000 incubated at room temperature for 1.5 hours.



Various lysates were subjected to SDS PAGE followed by western blot with 66360-1-Ig (Mouse IgG1 isotype control antibody) at dilution of 1:1000 incubated at room temperature for 1.5 hours.