

For Research Use Only

# Catalase Monoclonal antibody

Catalog Number: 66765-1-Ig

Featured Product

30 Publications



## Basic Information

Catalog Number:

66765-1-Ig

Size:

150ul, Concentration: 1500 ug/ml by Nanodrop;

Source:

Mouse

Isotype:

IgG1

Immunogen Catalog Number:

AG16916

GenBank Accession Number:

BC112219

GeneID (NCBI):

847

UNIPROT ID:

P04040

Full Name:

catalase

Calculated MW:

60 kDa

Observed MW:

60 kDa

Purification Method:

Protein G purification

CloneNo.:

1F8D7

Recommended Dilutions:

WB: 1:5000-1:50000

IHC: 1:100-1:500

IF/ICC: 1:200-1:800

## Applications

Tested Applications:

WB, IHC, IF/ICC, ELISA

Cited Applications:

WB, IHC, IF

Species Specificity:

human, mouse, rat, pig

Cited Species:

human, mouse, rat, pig, goat

**Note-IHC: suggested antigen retrieval with TE buffer pH 9.0; (\*) Alternatively, antigen retrieval may be performed with citrate buffer pH 6.0**

Positive Controls:

WB: HeLa cells, rat brain tissue, mouse brain tissue, HEK-293 cells, HepG2 cells, Jurkat cells, HSC-T6 cells, NIH/3T3 cells, pig brain tissue

IHC: human hepatocirrhosis tissue,

IF/ICC: HepG2 cells,

## Background Information

Catalase belongs to the catalase family. CAT occurs in almost all aerobically respiring organisms and serves to protect cells from the toxic effects of hydrogen peroxide. CAT promotes the growth of cells including T-cells, B-cells, myeloid leukemia cells, melanoma cells, mastocytoma cells, and normal and transformed fibroblast cells. CAT catalyzes the reaction:  $2\text{H}_2\text{O}_2 = \text{O}_2 + 2\text{H}_2\text{O}$ . Defects in CAT are the cause of acatalasia (ACATLAS) which is also known as acatalasemia.

## Notable Publications

Author	Pubmed ID	Journal	Application
Qin Li	36410421	Am J Pathol	WB
Jian Xiao	31144242	Sci China Life Sci	
Jing Li	33774368	Theriogenology	WB

## Storage

Storage:

Store at -20°C. Stable for one year after shipment.

Storage Buffer:

PBS with 0.02% sodium azide and 50% glycerol, pH7.3

Aliquoting is unnecessary for -20°C storage

\*\*\* 20ul sizes contain 0.1% BSA

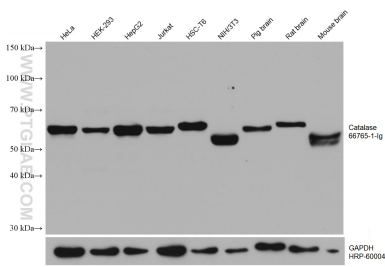
For technical support and original validation data for this product please contact:

T: 1 (888) 4PTGLAB (1-888-478-4522) (toll free in USA), or 1(312) 455-8498 (outside USA)

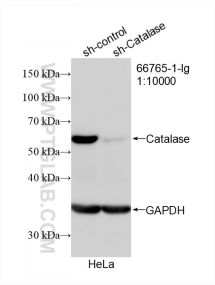
E: [proteintech@ptglab.com](mailto:proteintech@ptglab.com)  
W: [ptglab.com](http://ptglab.com)

This product is exclusively available under Proteintech Group brand and is not available to purchase from any other manufacturer.

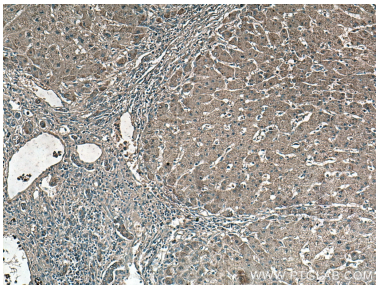
Selected Validation Data



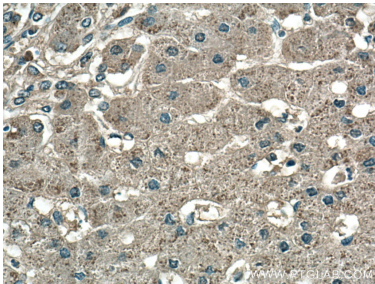
Various lysates were subjected to SDS PAGE followed by western blot with 66765-1-Ig (Catalase antibody) at dilution of 1:10000 incubated at room temperature for 1.5 hours. The membrane was stripped and reblotted with HRP-conjugated GAPDH Monoclonal antibody (HRP-60004) as loading control.



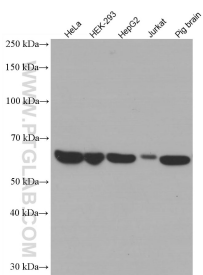
WB result of Catalase antibody (66765-1-Ig; 1:10000; incubated at room temperature for 1.5 hours) with sh-Control and sh-Catalase transfected HeLa cells.



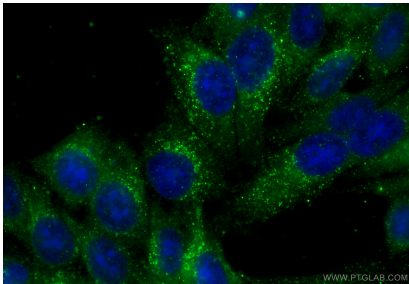
Immunohistochemical analysis of paraffin-embedded human hepatocirrhosis tissue slide using 66765-1-Ig (Catalase antibody) at dilution of 1:500 (under 10x lens).



Immunohistochemical analysis of paraffin-embedded human hepatocirrhosis tissue slide using 66765-1-Ig (Catalase antibody) at dilution of 1:500 (under 40x lens).



Various lysates were subjected to SDS PAGE followed by western blot with 66765-1-Ig (Catalase antibody) at dilution of 1:5000 incubated at room temperature for 1.5 hours.



Immunofluorescent analysis of (-20°C Ethanol) fixed HepG2 cells using Catalase antibody (66765-1-Ig, Clone: 1F8D7 ) at dilution of 1:400 and CoraLite@488-Conjugated Goat Anti-Mouse IgG(H+L) (SA00013-1).