

For Research Use Only

ZEB2 Monoclonal antibody

Catalog Number: 67514-1-Ig

Featured Product

5 Publications



Basic Information

Catalog Number:

67514-1-Ig

Size:

150ul, Concentration: 1000 ug/ml by Nanodrop;

Source:

Mouse

Isotype:

IgG1

Immunogen Catalog Number:

AG25477

GenBank Accession Number:

BC127102

GeneID (NCBI):

9839

UNIPROT ID:

O60315

Full Name:

zinc finger E-box binding homeobox 2

Observed MW:

160 kDa

Purification Method:

Protein G purification

CloneNo.:

1D3A2

Recommended Dilutions:

WB: 1:500-1:2000

FC (Intra): 0.40 ug per 10⁶ cells in a 100 µl suspension

Applications

Tested Applications:

WB, FC (Intra), ELISA

Cited Applications:

WB, IF

Species Specificity:

human, mouse, rat

Cited Species:

human

Positive Controls:

WB: K-562 cells, HT-1080 cells, NIH/3T3 cells, HSC-T6 cells, 4T1 cells

FC (Intra): HepG2 cells,

Background Information

Zinc finger E-box-binding homeobox (ZEB2) is a key transcription factor that acts as a multifunctional regulator during nervous system development. ZEB2 contains two zinc finger domains and a homeodomain-like sequence and interacts with the TGF- β superfamily signaling regulators, Smads, to regulate the expression of their downstream genes. ZEB2 is expressed in the developing neural tube, as well as in neural crest cells, the hippocampus and the cerebral cortex. ZEB2 has previously been implicated in EMT, cell-cycle progression, apoptosis and senescence. ZEB2 was overexpressed in bladder, ovarian, stomach, pancreatic and squamous cell carcinoma, in the intestinal subtype of stomach cancers, and at the invasive front of CRC where EMT is most prominent. ZEB2 also mediates cell-fate decision in neuronal, T cells and hematopoietic stem cells. The calculated molecular weight of ZEB2 is 136 kDa, but we find the 95 kDa band in some publication (PMID: 27659015)

Notable Publications

| Author | Pubmed ID | Journal | Application |
|--------------|-----------|--------------|-------------|
| Ting Peng | 35695407 | J Med Chem | WB |
| Longhui Ruan | 34265287 | Exp Cell Res | WB |
| Ting Wang | 35138000 | Exp Physiol | WB |

Storage

Storage:

Store at -20°C. Stable for one year after shipment.

Storage Buffer:

PBS with 0.02% sodium azide and 50% glycerol, pH7.3

Aliquoting is unnecessary for -20°C storage

*** 20ul sizes contain 0.1% BSA

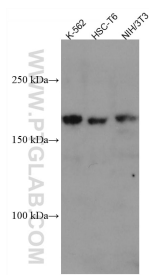
For technical support and original validation data for this product please contact:

T: 1 (888) 4PTGLAB (1-888-478-4522) (toll free in USA), or 1(312) 455-8498 (outside USA)

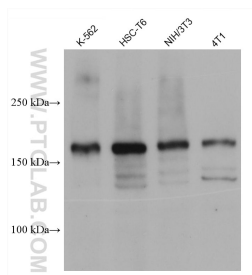
E: proteintech@ptglab.com
W: ptglab.com

This product is exclusively available under Proteintech Group brand and is not available to purchase from any other manufacturer.

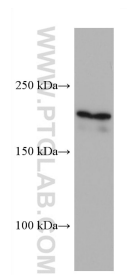
Selected Validation Data



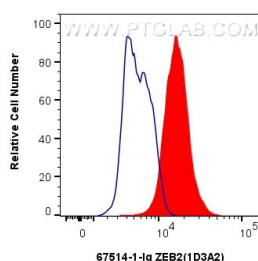
Various lysates were subjected to SDS PAGE followed by western blot with 67514-1-Ig (ZEB2 antibody) at dilution of 1:1000 incubated at room temperature for 1.5 hours.



Various lysates were subjected to SDS PAGE followed by western blot with 67514-1-Ig (ZEB2 antibody) at dilution of 1:5000 incubated at room temperature for 1.5 hours.



HT-1080 cells were subjected to SDS PAGE followed by western blot with 67514-1-Ig (ZEB2 antibody) at dilution of 1:5000 incubated at room temperature for 1.5 hours.



1x10⁶ HepG2 cells were intracellularly stained with 0.4 ug ZEB2 Monoclonal antibody (67514-1-Ig, Clone:1D3A2) and Coralite®488-Conjugated AffiniPure Goat Anti-Mouse IgG(H+L) (SA00013-1) (red), or 0.4 ug Mouse IgG1 isotype control Mouse McAb (66360-1-Ig, Clone: 1F8D3) (blue). Cells were fixed and permeabilized with True-Nuclear Transcription Factor Buffer Set.