

For Research Use Only

# Ins1 Monoclonal antibody

Catalog Number: 67668-1-Ig **1 Publications**



## Basic Information

<b>Catalog Number:</b> 67668-1-Ig	<b>GenBank Accession Number:</b> NM_008386	<b>Purification Method:</b> Protein G purification
<b>Size:</b> 150ul , Concentration: 1000 ug/ml by Nanodrop and 500 ug/ml by Bradford method using BSA as the standard;	<b>GeneID (NCBI):</b> 16333	<b>CloneNo.:</b> 1H2C11
<b>Source:</b> Mouse	<b>UNIPROT ID:</b> P01325	<b>Recommended Dilutions:</b> IHC: 1:2500-1:10000 IF-P: 1:50-1:500
<b>Isotype:</b> IgG1	<b>Full Name:</b> insulin I	
<b>Immunogen Catalog Number:</b> AG29988	<b>Calculated MW:</b> 12 kDa	

## Applications

<b>Tested Applications:</b> IHC, IF-P, ELISA	<b>Positive Controls:</b>
<b>Cited Applications:</b> IF	<b>IHC :</b> mouse pancreas tissue, rat pancreas tissue
<b>Species Specificity:</b> mouse, rat	<b>IF-P :</b> mouse pancreas tissue,
<b>Cited Species:</b> mouse	
<b>Note-IHC: suggested antigen retrieval with TE buffer pH 9.0; (*) Alternatively, antigen retrieval may be performed with citrate buffer pH 6.0</b>	

## Background Information

insulin I is a peptide hormone that plays a vital role in the regulation of carbohydrate and lipid metabolism. The encoded precursor protein undergoes proteolytic cleavage to produce a disulfide-linked heterodimeric functional protein that is stored in secretory granules. An increase in blood glucose levels, among others, induces the release of insulin from the secretory granules. Mice deficient in the functional hormone encoded by this gene develop diabetes mellitus.

## Notable Publications

Author	Pubmed ID	Journal	Application
Fengling Lai	39694915	Diabetologia	IF

## Storage

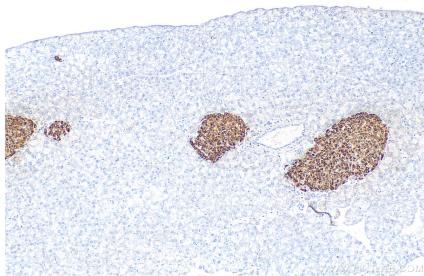
**Storage:**  
Store at -20°C. Stable for one year after shipment.  
**Storage Buffer:**  
PBS with 0.02% sodium azide and 50% glycerol, pH7.3  
Aliquoting is unnecessary for -20°C storage

\*\*\* 20ul sizes contain 0.1% BSA

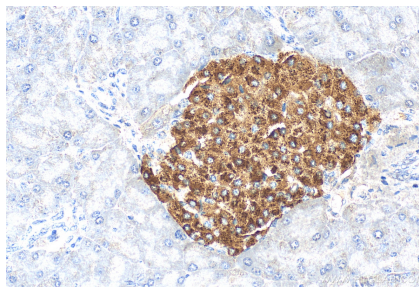
For technical support and original validation data for this product please contact:  
T: 1 (888) 4PTGLAB (1-888-478-4522) (toll free in USA), or 1(312) 455-8498 (outside USA)  
E: proteintech@ptglab.com  
W: ptglab.com

This product is exclusively available under Proteintech Group brand and is not available to purchase from any other manufacturer.

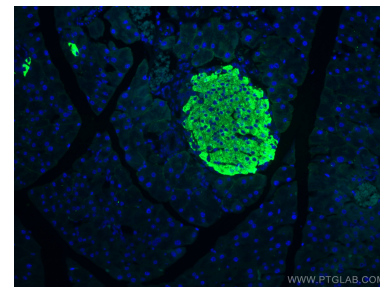
## Selected Validation Data



Immunohistochemical analysis of paraffin-embedded mouse pancreas tissue slide using 67668-1-Ig (Ins1 antibody) at dilution of 1:3200 (under 10x lens). Heat mediated antigen retrieval with Tris-EDTA buffer (pH 9.0).



Immunohistochemical analysis of paraffin-embedded mouse pancreas tissue slide using 67668-1-Ig (Ins1 antibody) at dilution of 1:3200 (under 40x lens). Heat mediated antigen retrieval with Tris-EDTA buffer (pH 9.0).



Immunofluorescent analysis of (4% PFA) fixed mouse pancreas tissue using Ins1 antibody (67668-1-Ig, Clone: 1H2C11) at dilution of 1:200 and CoraLite®488-Conjugated AffiniPure Goat Anti-Mouse IgG(H+L).