

For Research Use Only

# cyclin B1 Monoclonal antibody

Catalog Number: 67686-1-Ig

Featured Product

24 Publications



## Basic Information

Catalog Number:

67686-1-Ig

Size:

150ul, Concentration: 1000 ug/ml by Nanodrop;

Source:

Mouse

Isotype:

IgG1

Immunogen Catalog Number:

AG29444

GenBank Accession Number:

BC006510

GeneID (NCBI):

891

UNIPROT ID:

P14635

Full Name:

cyclin B1

Calculated MW:

48 kDa

Observed MW:

55 kDa

Purification Method:

Protein G purification

CloneNo.:

1F3G11

Recommended Dilutions:

WB: 1:2000-1:10000

IHC: 1:1000-1:4000

IF/ICC: 1:400-1:1600

FC (Intra): 0.40 ug per 10<sup>6</sup> cells in a 100 µl suspension

## Applications

Tested Applications:

WB, IHC, IF/ICC, FC (Intra), ELISA

Cited Applications:

WB, IF

Species Specificity:

human, mouse, rat

Cited Species:

human, mouse, rat

**Note-IHC: suggested antigen retrieval with TE buffer pH 9.0; (\*) Alternatively, antigen retrieval may be performed with citrate buffer pH 6.0**

Positive Controls:

WB: A549 cells, HeLa cells, NIH/3T3 cells, HSC-T6 cells, K-562 cells, Jurkat cells, HEK-293 cells

IHC: human tonsillitis tissue, rat skin tissue

IF/ICC: HeLa cells, HT-29 cells

FC (Intra): HeLa cells,

## Background Information

Cyclin B1 is a regulatory protein involved in mitosis. The gene product complexes with p34(cdc2) to form the maturation-promoting factor (MPF). Two alternative transcripts have been found, a constitutively expressed transcript and a cell cycle-regulated transcript, that is expressed predominantly during G2/M phase of the cell cycle. The different transcripts result from the use of alternate transcription initiation sites. The antibody is specific to CCNB1. We got a 55-60 kDa band in western blotting maybe due to phosphorylation.

## Notable Publications

Author	Pubmed ID	Journal	Application
Li Zhu	34631884	Biomed Res Int	WB
Tsung-Teng Huang	36499211	Int J Mol Sci	WB
Silu Hou	36427601	Food Chem Toxicol	WB

## Storage

Storage:

Store at -20°C. Stable for one year after shipment.

Storage Buffer:

PBS with 0.02% sodium azide and 50% glycerol, pH7.3

Aliquoting is unnecessary for -20°C storage

\*\*\* 20ul sizes contain 0.1% BSA

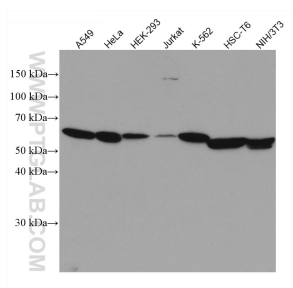
For technical support and original validation data for this product please contact:

T: 1 (888) 4PTGLAB (1-888-478-4522) (toll free in USA), or 1(312) 455-8498 (outside USA)

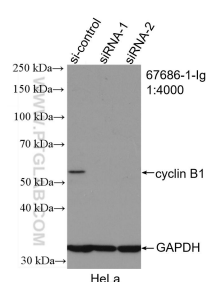
E: [proteintech@ptglab.com](mailto:proteintech@ptglab.com)  
W: [ptglab.com](http://ptglab.com)

This product is exclusively available under Proteintech Group brand and is not available to purchase from any other manufacturer.

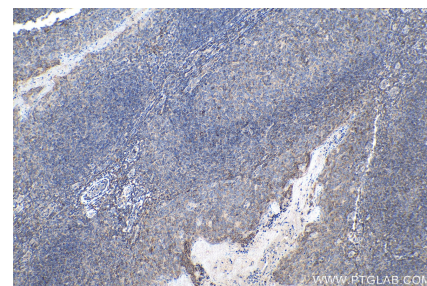
## Selected Validation Data



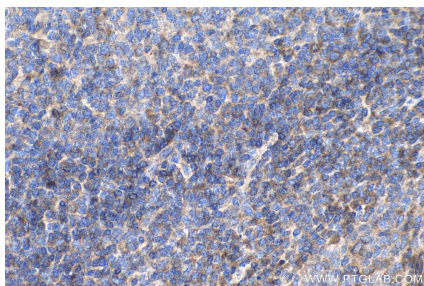
Various lysates were subjected to SDS PAGE followed by western blot with 67686-1-Ig (cyclin B1 antibody) at dilution of 1:4000 incubated at room temperature for 1.5 hours.



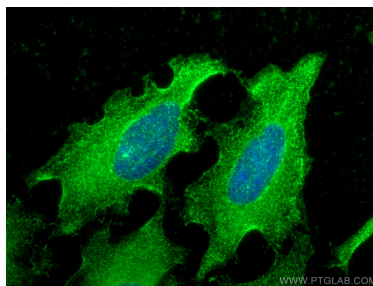
WB result of cyclin B1 antibody (67686-1-Ig; 1:3200; incubated at room temperature for 1.5 hours) with sh-Control and sh-cyclin B1 transfected HeLa cells.



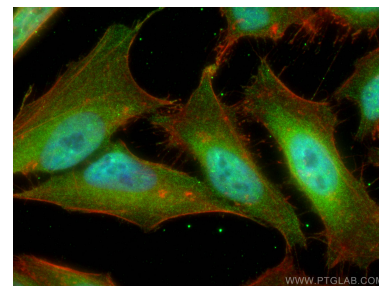
Immunohistochemical analysis of paraffin-embedded human tonsillitis tissue slide using 67686-1-Ig (cyclin B1 antibody) at dilution of 1:1600 (under 10x lens). Heat mediated antigen retrieval with Tris-EDTA buffer (pH 9.0).



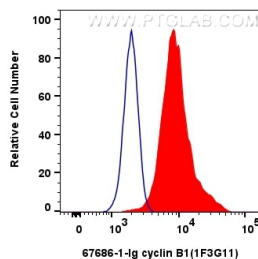
Immunohistochemical analysis of paraffin-embedded human tonsillitis tissue slide using 67686-1-Ig (cyclin B1 antibody) at dilution of 1:1600 (under 40x lens). Heat mediated antigen retrieval with Tris-EDTA buffer (pH 9.0).



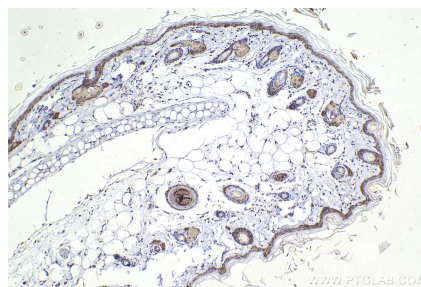
Immunofluorescent analysis of (-20°C Ethanol) fixed HeLa cells using cyclin B1 antibody (67686-1-Ig, Clone: 1F3G11) at dilution of 1:300 and CoraLite®488-Conjugated AffiniPure Goat Anti-Mouse IgG(H+L).



Immunofluorescent analysis of (4% PFA) fixed HeLa cells using cyclin B1 antibody (67686-1-Ig, Clone: 1F3G11) at dilution of 1:650 and CoraLite®488-Conjugated AffiniPure Goat Anti-Mouse IgG(H+L), CL594-Phalloidin (red).



1x10<sup>6</sup> HeLa cells were intracellularly stained with 0.4 ug cyclin B1 Monoclonal antibody (67686-1-Ig, Clone: 1F3G11)(red), or 0.4 ug Mouse IgG1 Isotype Control (MOPC-21) (65124-1-Ig, Clone: MOPC-21) (blue). Cells were fixed with 4% PFA and permeabilized with Flow Cytometry Perm Buffer (PF00011-C).



Immunohistochemical analysis of paraffin-embedded rat skin tissue slide using 67686-1-Ig (cyclin B1 antibody) at dilution of 1:1000 (under 10x lens). Heat mediated antigen retrieval with Tris-EDTA buffer (pH 9.0).