

For Research Use Only

CoraLite®594-conjugated CD23 Monoclonal antibody

Catalog Number:CL594-60208



Basic Information

Catalog Number: CL594-60208	GenBank Accession Number: BC064417	Purification Method: Protein A purification
Size: 100ul , Concentration: 1000 ug/ml by Nanodrop;	GeneID (NCBI): 2208	CloneNo.: 4C7C9
Source: Mouse	UNIPROT ID: P06734	Recommended Dilutions: IF-P: 1:50-1:500
Isotype: IgG2a	Full Name: Fc fragment of IgE, low affinity II, receptor for (CD23)	Excitation/Emission maxima wavelengths: 588 nm / 604 nm
Immunogen Catalog Number: AG0425	Calculated MW: 321 aa, 36 kDa	

Applications

Tested Applications: IF-P	Positive Controls: IF-P : human tonsillitis tissue, human lymphoma tissue
Species Specificity: human	

Background Information

CD23, also known as low affinity immunoglobulin epsilon Fc receptor, is a transmembrane glycoprotein present on a subpopulation of B lymphocytes in germinal centres, EBV-transformed B-lymphoblastoid cell lines, follicular dendritic cells, and a subpopulation of peripheral blood cells. CD23 has essential roles in the regulation of IgE production and in the differentiation of B-cells. And the antibody is conjugated with CL594, Ex/Em 593 nm/614 nm.

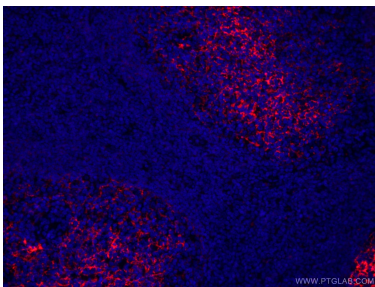
Storage

Storage:
Store at -20°C. Avoid exposure to light. Stable for one year after shipment.
Storage Buffer:
PBS with 50% glycerol, 0.05% Proclin300, 0.5% BSA, pH7.3
Aliquoting is unnecessary for -20°C storage

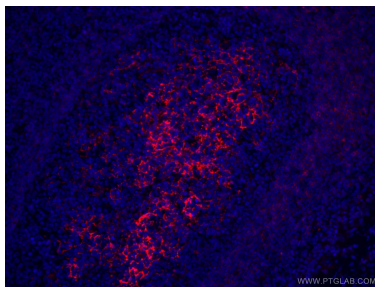
For technical support and original validation data for this product please contact:
T: 1 (888) 4PTGLAB (1-888-478-4522) (toll free in USA), or 1(312) 455-8498 (outside USA)
E: proteintech@ptglab.com
W: ptglab.com

This product is exclusively available under Proteintech Group brand and is not available to purchase from any other manufacturer.

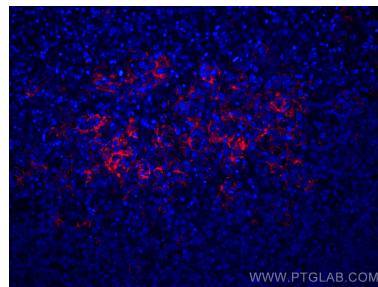
Selected Validation Data



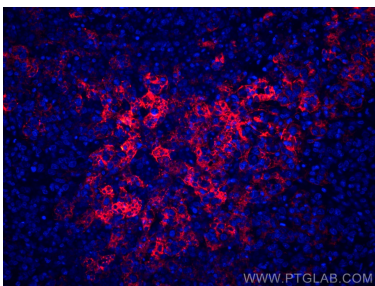
Immunofluorescent analysis of (4% PFA) fixed human tonsillitis tissue using CL594-60208 (CD23 antibody) at dilution of 1:50 .



Immunofluorescent analysis of (4% PFA) fixed human tonsillitis tissue using CL594-60208 (CD23 antibody) at dilution of 1:50 .



Immunofluorescent analysis of (4% PFA) fixed human lymphoma tissue using CoraLite®594 CD23 antibody (CL594-60208, Clone: 4C7C9) at dilution of 1:200.



Immunofluorescent analysis of (4% PFA) fixed human lymphoma tissue using CoraLite®594 CD23 antibody (CL594-60208, Clone: 4C7C9) at dilution of 1:200.