

For Research Use Only

CoraLite®594-conjugated Alpha 1B-Glycoprotein Monoclonal antibody

Catalog Number:CL594-66260



Basic Information

Catalog Number:

CL594-66260

Size:

100ul , Concentration: 1000 ug/ml by 1 Nanodrop;

Source:

Mouse

Isotype:

IgG1

Immunogen Catalog Number:

AG5414

GenBank Accession Number:

BC035719

GeneID (NCBI):

1

UNIPROT ID:

P04217

Full Name:

alpha-1-B glycoprotein

Calculated MW:

54 kDa

Observed MW:

72 kDa

Purification Method:

Protein G purification

CloneNo.:

4D4E5

Recommended Dilutions:

IF/ICC 1:50-1:500

Excitation/Emission maxima wavelengths:

588 nm / 604 nm

Applications

Tested Applications:

IF/ICC

Species Specificity:

human

Positive Controls:

IF/ICC : HepG2 cells,

Background Information

Alpha-1B-glycoprotein (A1BG) is a plasma protein and is a member of the immunoglobulin superfamily. A1BG contains 474 amino acids and has 5 intrachain disulfide bonds. It has been reported that cysteine-rich secretory protein 3 (CRISP-3) is a specific and high-affinity ligand of A1BG. A1BG-CRISP-3 complex displays a similar function in protecting the circulation from a potentially harmful effect of free CRISP3 (PMID: 15461460).

Storage

Storage:

Store at -20°C. Avoid exposure to light. Stable for one year after shipment.

Storage Buffer:

PBS with 50% Glycerol, 0.05% Proclin300, 0.5% BSA, pH 7.3.

Aliquoting is unnecessary for -20°C storage

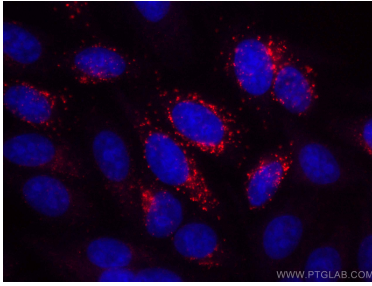
For technical support and original validation data for this product please contact:

T: 1 (888) 4PTGLAB (1-888-478-4522) (toll free in USA), or 1(312) 455-8498 (outside USA)

E: proteintech@ptglab.com
W: ptglab.com

This product is exclusively available under Proteintech Group brand and is not available to purchase from any other manufacturer.

Selected Validation Data



Immunofluorescent analysis of (-20°C Ethanol) fixed HepG2 cells using CoraLite®594 Alpha 1B- Glycoprotein antibody (CL594-66260, Clone: 4D4E5) at dilution of 1:100.