

For Research Use Only

CoraLite®594-conjugated TUBB3-specific/TUJ1 Monoclonal antibody

Catalog Number: CL594-66375

2 Publications



Basic Information

Catalog Number:

CL594-66375

Size:

100ul , Concentration: 1000 ug/ml by Nanodrop;

Source:

Mouse

Isotype:

IgG1

GenBank Accession Number:

NM_001197181

GeneID (NCBI):

10381

Full Name:

tubulin, beta 3

Calculated MW:

55 kDa

Observed MW:

50-55 kDa

Purification Method:

Protein G purification

CloneNo.:

1F8G10

Recommended Dilutions:

WB: 1:1000-1:4000

IF-P: 1:50-1:500

FC (Intra): 0.40 ug per 10⁶ cells in a 100 µl suspension

Excitation/Emission maxima wavelengths:

588 nm / 604 nm

Applications

Tested Applications:

WB, IF-P, FC (Intra)

Cited Applications:

IHC, IF

Species Specificity:

human, mouse, rat

Cited Species:

mouse

Positive Controls:

WB : SH-SY5Y cells, PC-12 cells, Neuro-2a cells

IF-P : mouse brain tissue,

FC (Intra) : SH-SY5Y cells,

Background Information

TUBB3, the class III β tubulin or Tuj1, is selectively expressed in testis and neurons of the central and peripheral nervous system. It has been widely used as a marker for neurons. Aberrant expression of TUBB3 has also been found in various tumors of non-neural origin and can be used as a biomarker for cancer aggressiveness and a marker for the tendency to respond poorly to chemotherapy. This antibody is specific to TUBB3 but not cross-react with other tubulin isoforms. And the antibody is conjugated with CL594, Ex/Em 593 nm/614 nm.

Notable Publications

Author	Pubmed ID	Journal	Application
Nao Iguchi	35332157	Sci Rep	IF
Yuki Shindo	35427599	Exp Cell Res	IHC

Storage

Storage:

Store at -20°C. Avoid exposure to light. Stable for one year after shipment.

Storage Buffer:

PBS with 50% glycerol, 0.05% Proclin300, 0.5% BSA, pH7.3

Aliquoting is unnecessary for -20°C storage

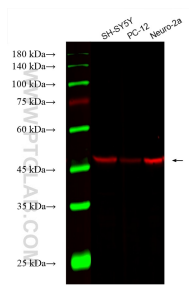
For technical support and original validation data for this product please contact:

T: 1 (888) 4PTGLAB (1-888-478-4522) (toll free in USA), or 1(312) 455-8498 (outside USA)

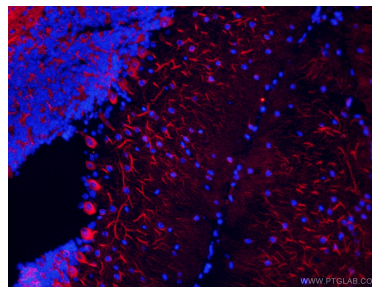
E: proteintech@ptglab.com
W: ptglab.com

This product is exclusively available under Proteintech Group brand and is not available to purchase from any other manufacturer.

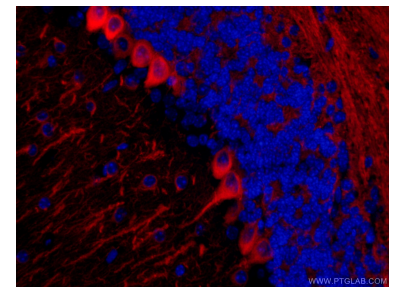
Selected Validation Data



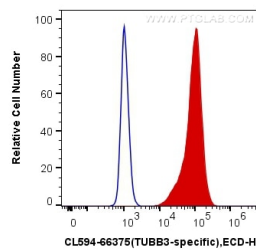
Various lysates were subjected to SDS PAGE followed by western blot with CL594-66375 (TUBB3-specific/TUJ1 antibody) at dilution of 1:2000 incubated at room temperature for 1.5 hours.



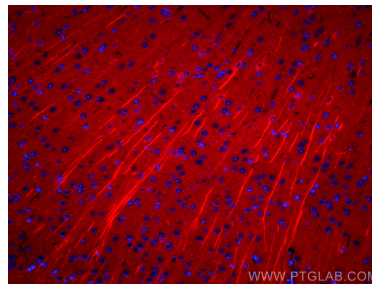
Immunofluorescent analysis of (4% PFA) fixed mouse brain tissue using CL594-66375 (TUBB3-specific antibody) at dilution of 1:50.



Immunofluorescent analysis of (4% PFA) fixed mouse brain tissue using CL594-66375 (TUBB3-specific antibody) at dilution of 1:50.



1X10⁶ SH-SY5Y cells were intracellularly stained with 0.4 ug CoraLite®594 Anti-Human TUBB3-specific (CL594-66375, Clone:1F8G10) (red), or 0.4 ug Mouse IgG1 Isotype Control (CL594-66360, Clone: T1F8D3F10) (blue). Cells were fixed with 4% PFA and permeabilized with Flow Cytometry Perm Buffer (PF00011-C).



Immunofluorescent analysis of (4% PFA) fixed mouse brain tissue using CoraLite®594 TUBB3-specific antibody (CL594-66375, Clone: 1F8G10) at dilution of 1:200.