

For Research Use Only.  
Not For Use In Diagnostics.

# Rhodamine (TRITC)-conjugated Goat Anti-Rabbit IgG(H+L)

Catalog Number:SA00007-2



[www.ptglab.com](http://www.ptglab.com)

## Information

Catalog Number:

SA00007-2

Host:

Goat

Applications:

IF, FC

Reactivity:

Rabbit

Physical State:

Liquid

Conjugation:

Rhodamine

Clonality:

Polyclonal

## Recommended Dilutions

1:20-1:100 for most applications

## Preservative

0.02% Sodium Azide

## Fluorophore

Teramethyl Rhodamine Isothiocyanate (TRITC)  $A_{max}=550nm, E_{max}=570nm$

## Stabilizer

5 mg/ml BSA

## Absorbance Ratio

A550/A280=0.42

## Safety Notes

This product is for research use only, not for diagnostic or therapeutic use.

## Storage

Storage:

Store at -20°C. Stable for one year after shipment.

Storage Buffer:

0.01 M Sodium phosphate, 0.25 M NaCl, 50% glycerol, 5 mg/ml BSA, 0.02% Sodium Azide, pH 7.6.

Aliquoting is unnecessary for -20°C storage

## Purity

The antibody was purified from antisera by immunoaffinity chromatography using antigens coupled to agarose beads.

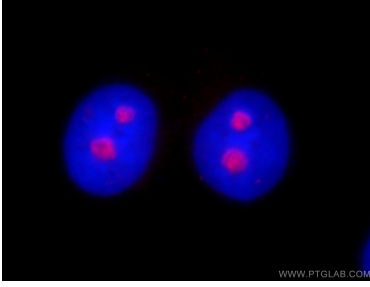
For technical support and original validation data for this product please contact:

T: 1 (888) 4PTGLAB  
(1-888-478-4522)  
(toll free in USA),  
or 1(312) 455-8498  
(outside USA)

E : [proteintech@ptglab.com](mailto:proteintech@ptglab.com)  
W: [ptglab.com](http://ptglab.com)

**This product is exclusively available under Proteintech Group brand and is not available to purchase from any other manufacturer.**

## Selected Validation Data



Immunofluorescent analysis of fixed HeLa cells using 10066-2-AP (HINFP antibody) at dilution of 1:25 and SA00007-2 (Rhodamine (TRITC)-conjugated Goat Anti-Rabbit IgG(H+L) (red). Blue pseudocolor = DAPI (fluorescent DNA dye).