

PRODUCT FOCUS

TDP-43



TDP-43 accumulation aggregation in the brain is a hallmark feature of many neurodegeneration diseases including frontotemporal lobar dementia (FTLD), amyotrophic lateral sclerosis (ALS) and alzheimers disease. Proteintech's TDP-43 polyclonal antibody 10782-2-AP played a seminal role in the discovery of this protein. The whole protein immunogen enabled the visualisation of aggregated TDP-43 in more disease scenarios. Proteintech TDP43 products have over **1400 citations to date**.

IHCeasy TDP-43

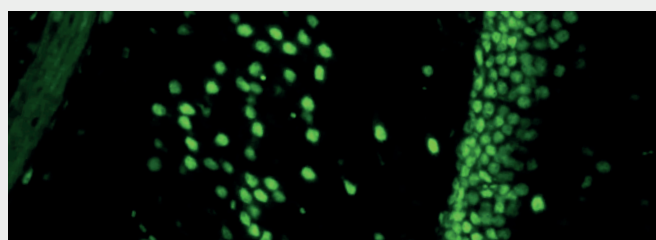
Ready-to-Use IHC Kit KHC0001



IHC of paraffin-embedded mouse brain tissue slide using **KHC0001** TDP-43 IHCeasy Kit.

CoraLite® 488-conjugated recombinant TDP-43 antibody

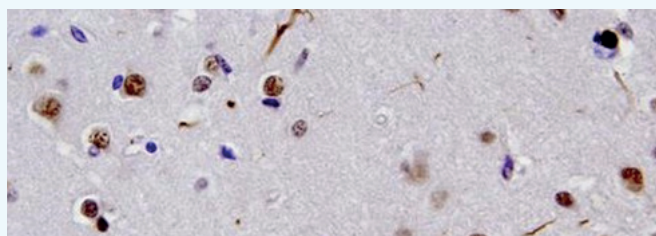
Catalog Number	Applications
CL488-80002	IF and FC



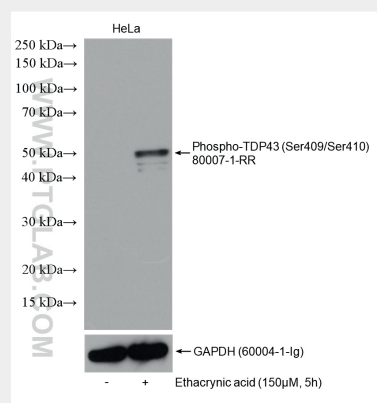
4% PFA fixed mouse brain using 1:100 of **CL488-80002**

TDP43 Polyclonal Antibody

Catalog Number	Applications	KD/KO
10782-2-AP	WB, IHC, IF, FC, IP, CoIP, ChIP	validated



40X of FTLD-U case stained by **10782-2-AP** (1:3000) showing dystrophic neurites.



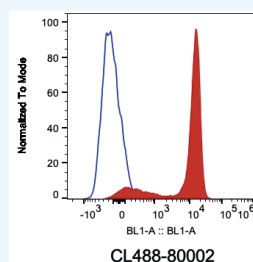
Phospho-TDP43 recombinant antibody

Catalog Number
80007-1-RR

Type
Recombinant Antibody

Applications
WB, IHC

Phospho-TDP43 (Ser409/410) recombinant antibody 80007-1-RR Control and ethacrynic acid treated HeLa cells. **80007-1-RR** 1:3000



HeLa cells stained with 0.2 µg **CL488-80002**. Cells were fixed with Transcription Factor Staining Buffer Kit (PF00011).

TDP43 Products

Catalog No.	Host and Clonality	Antigen Name	Application	Publications
10782-2-AP	Rabbit Polyclonal	TDP-43	FC, IF, IHC, WB, ELISA	1218
12892-1-AP	Rabbit Polyclonal	TDP-43 (C-terminal)	IF, IHC, IP, WB, ELISA	132
18280-1-AP	Rabbit Polyclonal	TDP-43	FC, IF, IHC, IP, WB, ELISA	6
22309-1-AP	Rabbit Polyclonal	Phospho-TDP43 (Ser409/410)	WB, ELISA	49
60019-2-Ig	Mouse Monoclonal	TDP-43 (human specific)	FC, IHC, IP, WB, ELISA	74
66079-1-Ig	Mouse Monoclonal	Phospho-TDP43 (Ser403/404)	FC, WB, ELISA	4
66318-1-Ig	Mouse Monoclonal	Phospho-TDP43 (Ser409/410)	WB, ELISA	1
66734-1-Ig	Mouse Monoclonal	TDP-43	FC, IHC, WB, ELISA	
67345-1-Ig	Mouse Monoclonal	TDP-43 (C-terminal)	FC, IF, IHC, WB, ELISA	
80001-1-RR	Rabbit Recombinant	TDP-43	FC, IHC, WB, ELISA	1
80002-1-RR	Rabbit Recombinant	TDP-43 (for IF/FC)	FC, IF, ELISA	
80007-1-RR	Rabbit Recombinant	Phospho-TDP43 (Ser409/410)	IHC, WB, ELISA	
CL488-10782	Rabbit Polyclonal	TDP-43	FC (Intra), IF	
CL488-12892	Rabbit Polyclonal	TDP-43 (C-terminal)	FC (Intra), IF	
CL488-67345	Mouse Monoclonal	TDP-43 (C-terminal)	IF	
CL488-80002	Rabbit Recombinant	TDP-43 (for IF/FC)	FC (Intra), IF	
CL594-12892	Rabbit Polyclonal	TDP-43 (C-terminal)	FC (Intra), IF	
CL594-67345	Mouse Monoclonal	TDP-43 (C-terminal)	IF	
CL594-80002	Rabbit Recombinant	TDP-43 (for IF/FC)	FC (Intra), IF	
KE00005	Mix	Human TDP-43 ELISA kit	ELISA (plasma and serum)	3
KE00009	Mix	Human TDP-43 ELISA kit	ELISA (CSF and cell lysate)	2