

Multi-rAb

Recombinant Secondary Antibodies

Multi-rAb Recombinant Secondary Antibodies are finely crafted mixtures of recombinant goat monoclonal antibodies that recognize multiple complementary epitopes on the same IgG. Each recombinant clone in the final multiclonal mixture is carefully selected after rigorous characterization and screening to ensure the highest level of performance.



*Combines the high sensitivity of polyclonals
with the superior specificity of monoclonals*

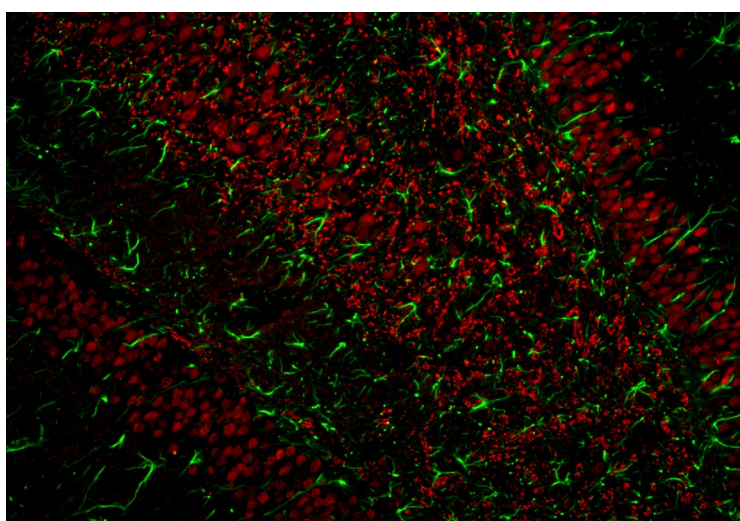
*Minimal cross-reactivity
with off-target species*

*Validated in WB, ELISA, IHC,
ICC, and Flow Cytometry*

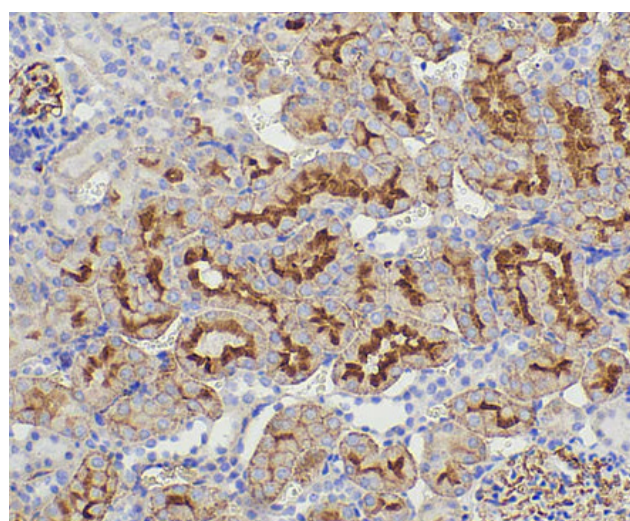
*Unlimited supply, high lot-to-lot consistency and
reproducible results throughout your project*

Species Reactivity: Rabbit, Mouse

Conjugates: HRP, Poly-HRP, CoraLite® Plus 488, CoraLite® Plus 555,
CoraLite® Plus 594, CoraLite® Plus 647, CoraLite® Plus 750

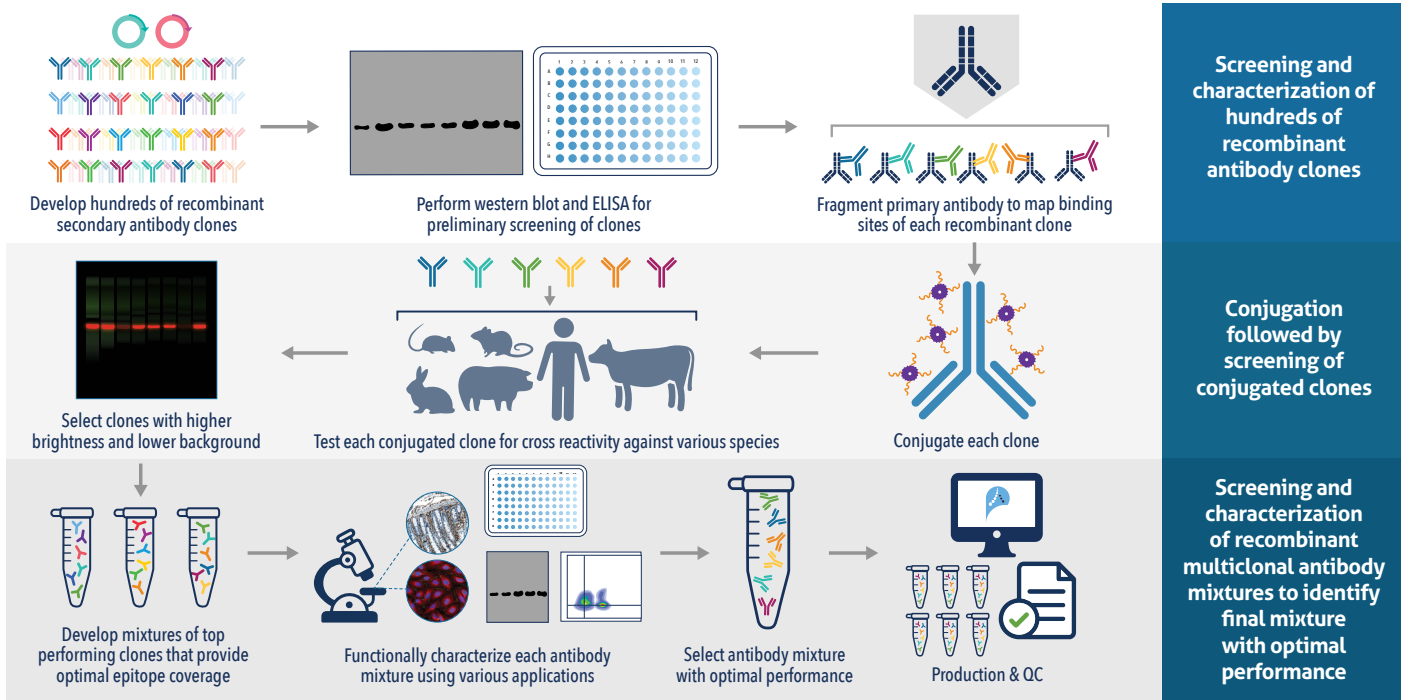


▲ IF analysis of rat brain FFPE tissue stained with anti-GFAP antibody (16825-1-AP, green) and anti-NeuN antibody (66836-1-Ig, red). **Multi-rAb CoraLite® Plus 488-Goat Anti-Rabbit Secondary Antibody (H+L) (RGAM002)** and **Multi-rAb CoraLite® Plus 594-Goat Anti-Mouse Recombinant Secondary Antibody (H+L) (RGAM004)** were used for detection.

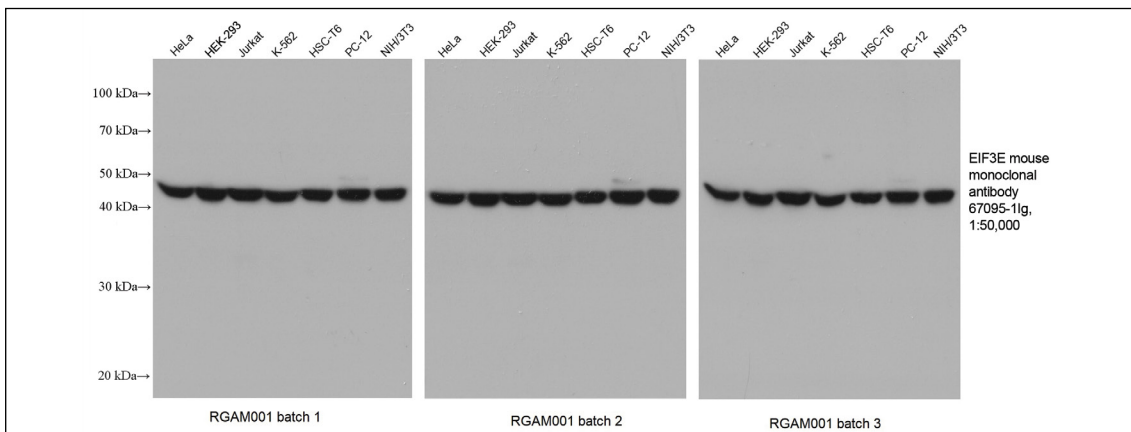


▲ Immunohistochemical analysis of paraffin-embedded rat kidney tissue slide using 67479-1-Ig (SLC22A7 antibody) at dilution of 1:2000 (under 10x lens). Heat mediated antigen retrieval with Tris-EDTA buffer (pH 9.0). **Multi-rAb™ Polymer HRP-Goat anti-Mouse Recombinant secondary antibody RGAM011** was used for detection. The staining was performed on **Celnovte's CNT360-M1** autostainer.

How are Multi-rAb Recombinant Secondaries produced?

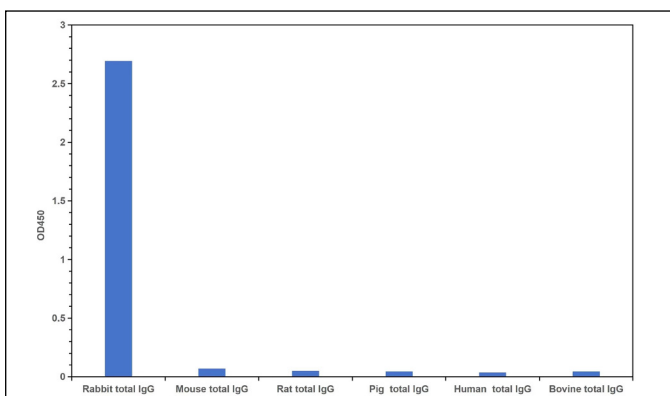


High lot-to-lot consistency



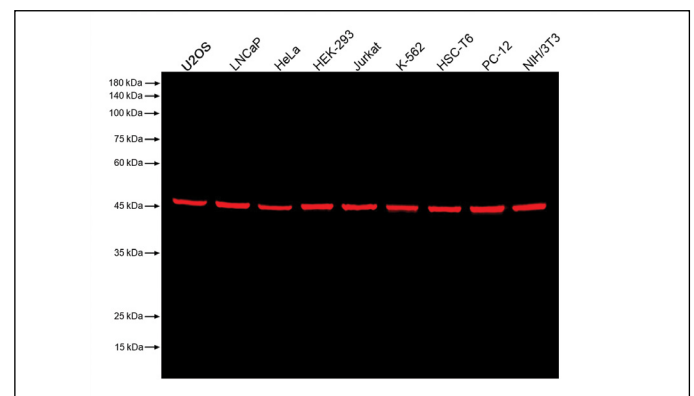
Western blot analysis of various lysates using anti-EIF3E antibody (67095-1-Ig). Three separate batches of Multi-rAb HRP-Goat Anti-Mouse Recombinant Secondary Antibody (H+L) (RGAM001) were used for detection.

Minimal cross-reactivity



▲ Cross reactivity test using Direct ELISA. Rabbit total IgG, Mouse total IgG, Rat total IgG, Pig total IgG, Human total IgG, Bovine total IgG were coated at 100 ng/well. 0.125 µg/mL Multi-rAb HRP-Goat Anti-Rabbit Recombinant Secondary Antibody (H+L) (RGAR001) was used for detection.

Optimized performance in every application



▲ Western blot analysis of various lysates using anti-EIF3E antibody (67095-1-Ig). Multi-rAb CoraLite Plus 750-Goat Anti-Mouse Recombinant Secondary Antibody (H+L) (RGAM006) was used for detection.