



chromotek®

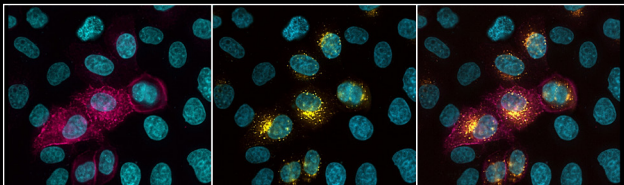


# Immuno-Oncology Cytokine & Growth Factor VHHs

Immunofluorescence – Flow Cytometry – Live Cell imaging

**Background image:** Live-Cell TIGIT internalization, detected at 2, 10, and 28 minutes with the ChromoTek CoraLite® Plus 647-conjugated anti-TIGIT VHH (CL647-tgt; magenta) in CHO cells, stably co-expressing TIGIT and GFP (green).

[ptglab.com](http://ptglab.com)



▲ Live HeLa cells transfected with human TIGIT were immunostained with CoraLite® Plus 647 conjugated-TIGIT VHH (CL647-tgt, 1:1000, magenta). The intracellular pool of TIGIT was immunostained with CoraLite® Plus 555 conjugated-TIGIT VHH (CL555-tgt, 1:1000, yellow). Cell nuclei were stained with DAPI (cyan).

## TARGETS (HUMAN)

### Immuno-Oncology

CTLA4  
FLT3  
LAG3  
MSLN  
PD-1  
PD-L1  
TIGIT  
TIM3

### CD Receptors

CD16

### Cytokines



IFN $\gamma$   
IL-6  
IL-28a  
IL-34

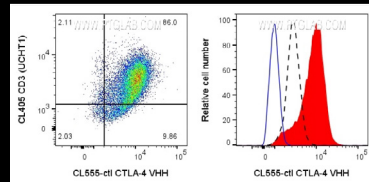
### Growth Factors

Cystatin-C  
FGF basic  
FGF 9  
OSM

## CONJUGATES

CoraLite® Plus 488  
CoraLite® Plus 555  
CoraLite® Plus 647  
FITC Plus

 Biotin  
 Unconjugated



▲ Human PBMCs, surface stained with 1ug CTLA-4 VHH (CL555-ctl) & CL405-CD3 (CL405-65151). Right: 1x10<sup>6</sup> PHA-treated (3d) huPBMCs, surface stained with 1ug CTLA-4 VHH (CL555-ctl) (red) or unstained (blue). 1X10<sup>6</sup> untreated huPBMCs, surface stained with 1ug CTLA-4 VHH (CL555-ctl) (black).

## chromotek® Immuno-Oncology Cytokine & Growth Factor VHHs

- Small size for minimal epitope-label displacement
- No target clustering due to monovalent design of VHHs
- High specificity & High affinity