

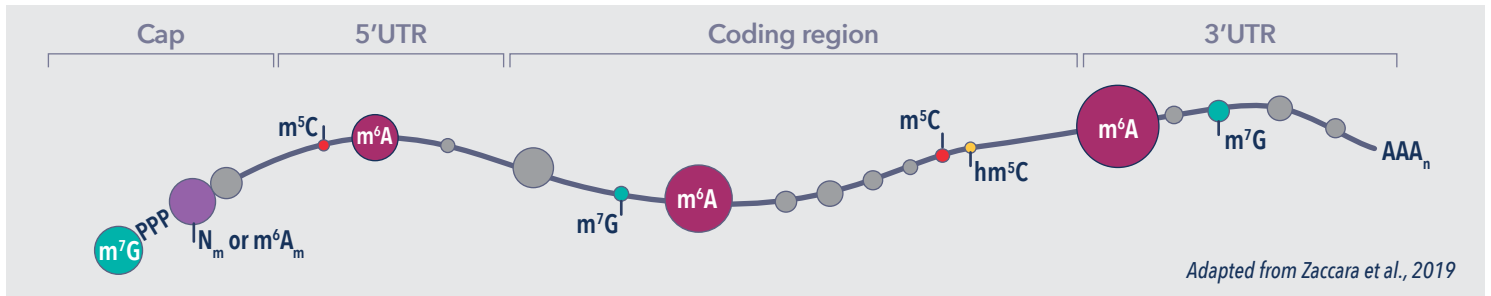


proteintech®

PRODUCTS FOR THE STUDY OF

# RNA Modifications

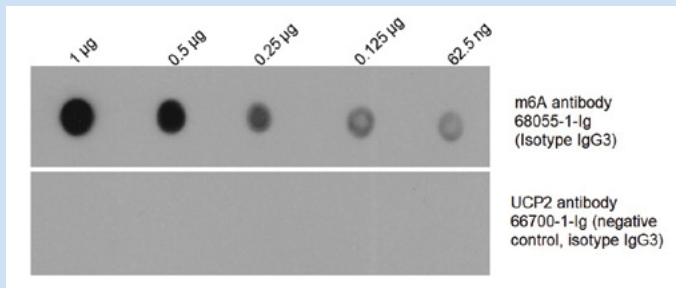
Nucleotide modifications to RNA transcripts can affect RNA splicing, translation, and stability. The effects of RNA modifications are determined by the dynamic interplay between their regulators called “writers” (methyltransferases), “readers” (binding proteins), and “erasers” (demethylases). RNA modifications and their regulators play significant roles in cancer pathogenesis and give rise to potential therapeutic targets.



## Antibodies against RNA methylation

### m6A Monoclonal Antibody

<b>Catalog No.</b> 68055-1-Ig	<b>Host/Isotype</b> Mouse/IgG3	<b>Applications</b> RIP, IHC, Dot Blot, ELISA
----------------------------------	-----------------------------------	--

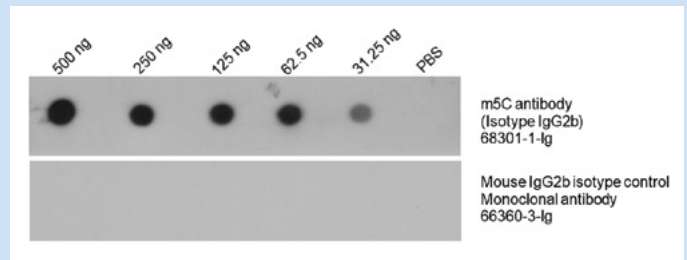


**5-Star Customer Rating**

m6A (68055-1-Ig), m5C (68301-1-Ig), and m7G (68302-1-Ig) monoclonal antibodies were used to identify their respective RNA modification in dot blot with total RNA isolates from HEK or HeLa cells. A parallel dot blot was performed as a control, using an antibody with the same isotype.

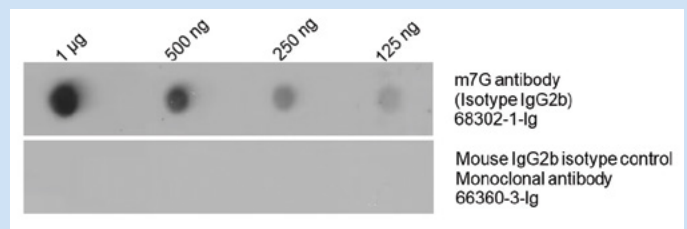
### m5C Monoclonal Antibody

<b>Catalog No.</b> 68301-1-Ig	<b>Host/Isotype</b> Mouse/IgG2b	<b>Applications</b> IHC, Dot Blot, ELISA
----------------------------------	------------------------------------	---



### m7G Monoclonal Antibody

<b>Catalog No.</b> 68302-1-Ig	<b>Host/Isotype</b> Mouse/IgG2b	<b>Applications</b> Dot Blot, ELISA
----------------------------------	------------------------------------	--



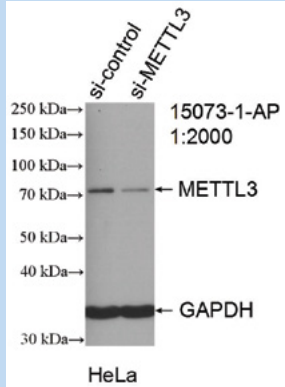
# Antibodies against m6A regulators

## METTL3 Polyclonal Antibody

**Catalog No.**  
15073-1-AP

**Host/Isotype**  
Rabbit IgG

**Applications**  
WB, RIP, IP, IHC, IF, FC,  
CoIP, ChIP, ELISA



**251 Citations**

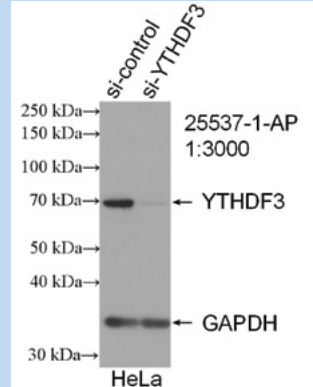
WB result of **METTL3** antibody (15073-1-AP) with control and METTL3 siRNA transfected HeLa cells

## YTHDF3 Polyclonal Antibody

**Catalog No.**  
25537-1-AP

**Host/Isotype**  
Rabbit IgG

**Applications**  
WB, RIP, IHC, IF, ELISA



**46 Citations**

WB result of **YTHDF3** antibody (25537-1-AP) with control and YTHDF3 siRNA transfected HeLa cells

## m6A Writers/Methyltransferases

Catalog No.	Target	Host/Isotype	Reactivity	Applications
15073-1-AP	METTL3	Rabbit/IgG	Human, Mouse, Monkey, Rat	WB, RIP, IP, IHC, IF, FC, CoIP, ChIP, ELISA
67733-1-Ig		Mouse/IgG1	Human, Mouse,	WT, IP, IHC, IF, ELISA
26158-1-AP	METTL14	Rabbit/IgG	Human	WB, RIP, IP, IHC, IF, ELISA
19924-1-AP	METTL16	Rabbit/IgG	Human, Rat, Mouse	WB, IHC, ELISA
60188-1-Ig	WTAP	Mouse/IgG1	Human, Mouse, Rat, Drosophila	WB, IP, IHC, IF, FC, ELISA
10200-1-AP		Rabbit/IgG	Human, Mouse, Rat	WB, RIP, IP, IHC, IF, ELISA
25712-1-AP	KIAA1429	Rabbit/IgG	Human	WB, IP, IHC, IF, CoIP, ELISA

## m6A Erasers/Demethylases

Catalog No.	Target	Host/Isotype	Reactivity	Applications
27226-1-AP	FTO	Rabbit/IgG	Human, Mouse, Rat, Chicken	WB, RIP, IP, IHC, IF, ELISA
16837-1-AP	ALKBH5	Rabbit/IgG	Human, Mouse, Rat, Bovine, Pig	WB, RIP, IHC, IF, CoIP, ELISA
67811-1-Ig		Mouse/IgG2b	Human, Mouse, Rat	WB, ELISA

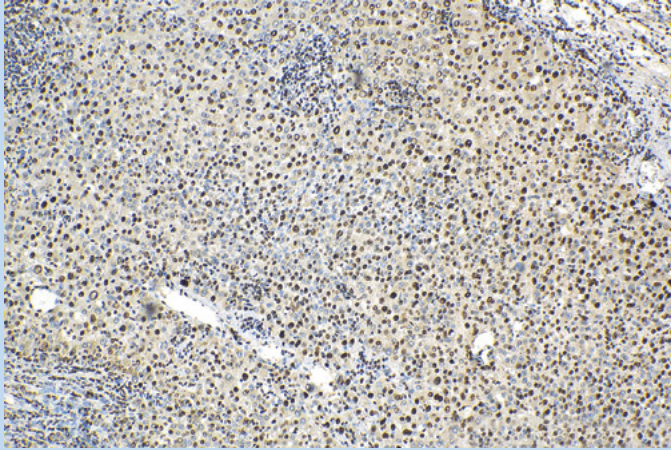
## m6A Readers

Catalog No.	Target	Host/Isotype	Reactivity	Applications
29441-1-AP	YTHDC1	Rabbit/IgG	Human, Mouse	WB, IP, IHC, ELISA
67911-1-Ig		Mouse/IgG1	Human	WB, ELISA
27779-1-AP	YTHDC2	Rabbit/IgG	Human, Mouse	WB, IP, IF, ELISA
17479-1-AP	YTHDF1	Rabbit/IgG	Human, Mouse, Rat	WB, RIP, IP, IHC, IF, CoIP, ELISA
66745-1-Ig		Mouse/IgG1	Human, Rat, Mouse, Pig	WB, IF, CoIP, ELISA
24744-1-AP	YTHDF2	Rabbit/IgG	Human, Mouse, Rat	WB, RIP, IP, IHC, IF, FC, CoIP, CLIP, ChIP, ELISA
25537-1-AP	YTHDF3	Rabbit/IgG	Human, Mouse, Chicken	WB, RIP, IHC, IF, ELISA

# Antibodies against m5C regulators

## NSUN2 Polyclonal Antibody

<b>Catalog No.</b> 20854-1-AP	<b>Host/Isotype</b> Rabbit IgG	<b>Applications</b> WB, IP, IHC, IF, ELISA
----------------------------------	-----------------------------------	---



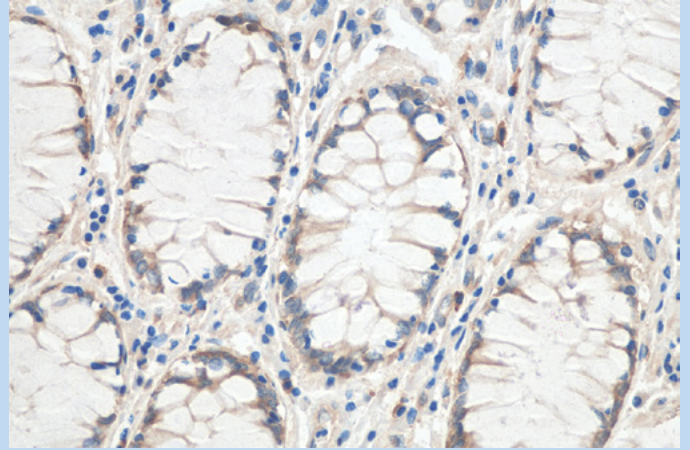
IHC staining using **NSUN2** antibody (20854-1-AP) in human liver cancer tissue



**38 Citations**

## YBX1 Polyclonal Antibody

<b>Catalog No.</b> 20339-1-AP	<b>Host/Isotype</b> Rabbit IgG	<b>Applications</b> WB, RIP, IHC, IF, CoIP, ChIP, ELISA
----------------------------------	-----------------------------------	--



IHC staining using **YBX1** antibody (20339-1-AP) in human colon cancer tissue



**29 Citations**

## m5C Writers/Methyltransferases

Catalog No.	Target	Host/Isotype	Reactivity	Applications
24206-1-AP	DNMT1	Rabbit/IgG	Human, Mouse, Rat	WB, IP, IHC, IF, CoIP, ChIP, ELISA
19221-1-AP	DNMT2	Rabbit/IgG	Human, Mouse, Rat	WB, ELISA
20854-1-AP	NSUN2	Rabbit/IgG	Human, Mouse, Rat	WB, IP, IHC, IF, ELISA
66580-1-Ig		Mouse/IgG2a	Human	WB, IHC, IF, ELISA

## m5C Erasers/Demethylases

Catalog No.	Target	Host/Isotype	Reactivity	Applications
21207-1-AP	TET2	Rabbit/IgG	Human, Mouse, Goat	WB, IP, IHC, IF, CoIP, ChIP, ELISA
27973-1-AP	ALKBH1	Rabbit/IgG	Human	WB, ELISA

## m5C Readers

Catalog No.	Target	Host/Isotype	Reactivity	Applications
16690-1-AP	ALYREF	Rabbit/IgG	Human, Mouse, Rat, Pig	WB, IP, IHC, IF, ELISA
20339-1-AP	YBX1	Rabbit/IgG	Human, Mouse, Rat	WB, RIP, IHC, IF, CoIP, ChIP, ELISA

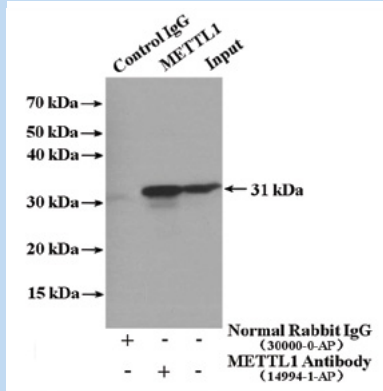
# Antibodies against m7G regulators

## METTL1 Polyclonal Antibody

Catalog No.  
14994-1-AP

Host/Isotype  
Rabbit IgG

Applications  
WB, IP, IHC, IF, ELISA



15 Citations

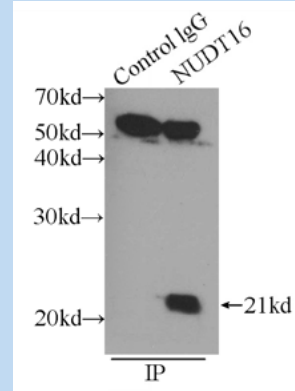
IP result of METTL1 antibody (14994-1-AP) with A2780 cells

## NUDT16 Polyclonal Antibody

Catalog No.  
12889-1-AP

Host/Isotype  
Rabbit IgG

Applications  
WB, IP, IHC, IF, ELISA



IP result of NUDT16 antibody (12889-1-AP) with HEK-293 cells

## m7G Writers/Methyltransferases

Catalog No.	Target	Host/Isotype	Reactivity	Applications
13743-1-AP	RNMT	Rabbit/IgG	Human, Mouse	WB, IHC, IF, CoIP
19221-1-AP		Rabbit/IgG	Human, Mouse	WB
14994-1-AP	METTL1	Mouse/IgG2a	Human, Mouse, Rat	WB, IP, IHC, IF, ELISA

## m7G Erasers/Demethylases

Catalog No.	Target	Host/Isotype	Reactivity	Applications
12889-1-AP	NUDT16	Rabbit/IgG	Human	WB, IP, IHC, IF, ELISA

## Want to optimize your IHC workflow?

Proteintech offers **IHCeasy** Ready-To-Use IHC kits against RNA modifications and their regulators.

### IHCeasy Kits for studying RNA methylation:

- ✓ ALKBH5
- ✓ ALYREF
- ✓ FTO
- ✓ KIAA1429
- ✓ m5C
- ✓ m6A
- ✓ METTL1
- ✓ METTL3
- ✓ METTL14
- ✓ METTL16
- ✓ NSUN2
- ✓ WTAP
- ✓ YBX1
- ✓ YTHDC1/2
- ✓ YTHDF1/2/3

Scan to learn more about IHCeasy

