

For Research Use Only

# GRB10 Polyclonal antibody

Catalog Number: 10028-2-AP



## Basic Information

<b>Catalog Number:</b> 10028-2-AP	<b>GenBank Accession Number:</b> BC024285	<b>Purification Method:</b> Antigen affinity purification
<b>Size:</b> 150ul , Concentration: 133 µg/ml by Bradford method using BSA as the standard;	<b>GeneID (NCBI):</b> 2887	<b>Recommended Dilutions:</b> WB 1:200-1:1000
<b>Source:</b> Rabbit	<b>Full Name:</b> growth factor receptor-bound protein 10	
<b>Isotype:</b> IgG	<b>Calculated MW:</b> 536aa,61 kDa; 594aa,67 kDa	

## Applications

<b>Tested Applications:</b> WB,ELISA	<b>Positive Controls:</b> WB : mouse brain tissue, mouse liver tissue
<b>Species Specificity:</b> human, mouse	

## Background Information

Growth factor receptor-bound protein 10 (GRB10) is an adapter protein which modulates coupling of a number of cell surface receptor kinases with specific signaling pathways. GRB10 has three consensus domains including pleckstrin homology (PH) domain, SH2/SH3 domain and Ras-associating domain. By binding to kinases, GRB10 suppresses signals from activated receptors tyrosine kinases, including the INSR and INS-like growth factor (IGF1R) receptors. It may play a role in mediating INS-stimulated ubiquitination of INSR, leading to proteasomal degradation.

## Storage

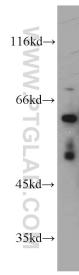
**Storage:**  
Store at -20°C. Stable for one year after shipment.  
**Storage Buffer:**  
PBS with 0.02% sodium azide and 50% glycerol pH 7.3.  
Aliquoting is unnecessary for -20°C storage

\*\*\* 20ul sizes contain 0.1% BSA

For technical support and original validation data for this product please contact:  
T: 1 (888) 4PTGLAB (1-888-478-4522) (toll free in USA), or 1(312) 455-8498 (outside USA)      E: proteintech@ptglab.com  
W: ptglab.com

This product is exclusively available under Proteintech Group brand and is not available to purchase from any other manufacturer.

## Selected Validation Data



mouse brain tissue were subjected to SDS PAGE followed by western blot with 10028-2-AP (GRB10 antibody) at dilution of 1:100 incubated at room temperature for 1.5 hours.