

RUVBL1 Polyclonal antibody

Catalog Number: 10210-2-AP

Featured Product

44 Publications

Basic Information

Catalog Number:

10210-2-AP

Size:

150ul, Concentration: 400 µg/ml by Nanodrop and 227 µg/ml by Bradford method using BSA as the standard;

Source:

Rabbit

Isotype:

IgG

Immunogen Catalog Number:

AG0281

GenBank Accession Number:

BC002993

GeneID (NCBI):

8607

Full Name:

RuvB-like 1 (E. coli)

Calculated MW:

456 aa, 50 kDa

Observed MW:

50 kDa

Purification Method:

Antigen affinity purification

Recommended Dilutions:

WB 1:1000-1:10000

IP 0.5-4.0 µg for 1.0-3.0 mg of total protein lysate

IHC 1:50-1:500

IF 1:50-1:500

Applications

Tested Applications:

IF, IHC, IP, WB, ELISA

Cited Applications:

CHIP, CoIP, IF, IHC, IP, WB

Species Specificity:

human, mouse

Cited Species:

human, mouse, bovine

Note-IHC: suggested antigen retrieval with TE buffer pH 9.0; (*) Alternatively, antigen retrieval may be performed with citrate buffer pH 6.0

Positive Controls:

WB : DU 145 cells, HEK-293 cells, HeLa cells, K-562 cells, NIH/3T3 cells

IP : HeLa cells,

IHC : mouse liver tissue, human ovary tumor tissue

IF : A431 cells,

Background Information

RUVBL1 is a member of the AAA (ATPase associated with diverse cellular activities) family of proteins that is associated with several chromatin-remodelling complexes and has important roles in transcriptional regulation, the DNA damage response, telomerase activity, snoRNP assembly, cellular transformation and cancer metastasis [PMID: 21617703]. It consists of 456 amino acids (50 kDa) and interacts with TATA-binding protein (TBP), which is a central component for transcriptional regulation by forming complexes with various transcription regulators. RUVBL1 is a component of a large nuclear protein complex, possibly the RNA polymerase II holoenzyme. RUVBL1 is also highly homologous to RuvB proteins that function as a DNA helicase promote branch migration of the Holliday junction [PMID: 9588198]. This antibody is a rabbit polyclonal antibody to human RUVBL1.

Notable Publications

| Author | Pubmed ID | Journal | Application |
|------------------|-----------|------------------------|-------------|
| Christian Schutt | 32960481 | EMBO J | WB |
| Tao Chen | 36438486 | Theranostics | WB, IHC |
| Sven Kracker | 25312759 | J Allergy Clin Immunol | WB |

Storage

Storage:

Store at -20°C. Stable for one year after shipment.

Storage Buffer:

PBS with 0.02% sodium azide and 50% glycerol pH 7.3.

Aliquoting is unnecessary for -20°C storage

*** 20ul sizes contain 0.1% BSA

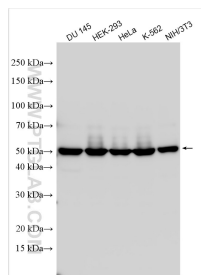
For technical support and original validation data for this product please contact:

T: 1 (888) 4PTGLAB (1-888-478-4522) (toll free in USA), or 1(312) 455-8498 (outside USA)

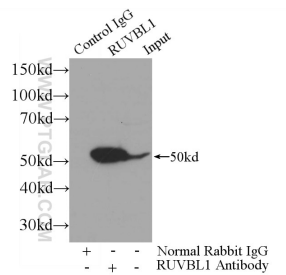
E: proteintech@ptglab.com
W: ptglab.com

This product is exclusively available under Proteintech Group brand and is not available to purchase from any other manufacturer.

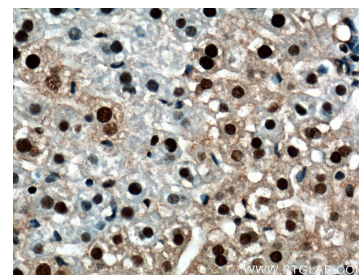
Selected Validation Data



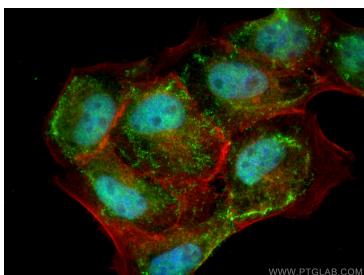
Various lysates were subjected to SDS PAGE followed by western blot with 10210-2-AP (RUVBL1 antibody) at dilution of 1:10000 incubated at room temperature for 1.5 hours.



IP Result of anti-RUVBL1 (IP:10210-2-AP, 3ug; Detection:10210-2-AP 1:1000) with HeLa cells lysate 800ug.



Immunohistochemical analysis of paraffin-embedded mouse liver tissue slide using 10210-2-AP (RUVBL1 Antibody) at dilution of 1:200 (under 40x lens). Heat mediated antigen retrieval with Tris-EDTA buffer (pH 9.0).



Immunofluorescent analysis of (4% PFA) fixed A431 cells using RUVBL1 antibody (10210-2-AP) at dilution of 1:200 and Coralite®488-Conjugated AffiniPure Goat Anti-Rabbit IgG(H+L), CL594-Phalloidin (red).