

# IκB Alpha Polyclonal antibody

Catalog Number: 10268-1-AP

423 Publications

## Basic Information

## Catalog Number:

10268-1-AP

## Size:

150ul, Concentration: 800 µg/ml by Nanodrop;

## Source:

Rabbit

## Isotype:

IgG

## Immunogen Catalog Number:

AG0345

## GenBank Accession Number:

BC002601

## GeneID (NCBI):

4792

## UNIPROT ID:

P25963

## Full Name:

nuclear factor of kappa light polypeptide gene enhancer in B-cells inhibitor, alpha

## Calculated MW:

36 kDa

## Observed MW:

36 kDa

## Purification Method:

Antigen affinity purification

## Recommended Dilutions:

WB 1:5000-1:50000

IP 0.5-4.0 µg for 1.0-3.0 mg of total protein lysate

IHC 1:50-1:500

IF 1:200-1:800

## Applications

## Tested Applications:

WB, IP, IF, FC, IHC, ELISA

## Cited Applications:

WB, IF, FC, IHC, CoIP

## Species Specificity:

human, mouse, pig, rat

## Cited Species:

human, CHICKEN, rat, mouse, ducks, pig, bovine

**Note-IHC: suggested antigen retrieval with TE buffer pH 9.0; (\*) Alternatively, antigen retrieval may be performed with citrate buffer pH 6.0**

## Positive Controls:

**WB:** A431 cells, HeLa cells, HEK-293 cells, pig liver tissue, HL-60 cells, HepG2 cells, Jurkat cells, NIH/3T3 cells, PC-12 cells

**IP:** HeLa cells,

**IHC:** human stomach tissue, mouse kidney tissue, human prostate cancer tissue, human kidney tissue

**IF:** A431 cells, HeLa cells

## Background Information

Nuclear factor of kappa light polypeptide gene enhancer in B-cells inhibitor, alpha (NFKBIA, synonyms: IKBA, MAD-3, NFKB1). NFKB1 or NFKB2 is bound to REL, RELA, or RELB to form the NFKB complex. The NFKB complex is inhibited by I-kappa-B proteins (NFKBIA or NFKBIB), which inactivate NF-kappa-B by trapping it in the cytoplasm. Phosphorylation of serine residues on the I-kappa-B proteins by kinases (IKBKA, or IKBKB) marks them for destruction via the ubiquitination pathway, thereby allowing activation of the NF-kappa-B complex. Activated NFKB complex translocates into the nucleus and binds DNA at kappa-B-binding motifs such as 5-prime GGGRNNYYCC 3-prime or 5-prime HGGARNYYCC 3-prime.

## Notable Publications

| Author      | Pubmed ID | Journal              | Application |
|-------------|-----------|----------------------|-------------|
| Menghui Xu  | 36290677  | Antioxidants (Basel) | WB          |
| Yuqian Wang | 32942847  | J Agric Food Chem    | WB          |
| Kun-Yi Li   | 32920833  | J Neurochem          | WB          |

## Storage

## Storage:

Store at -20°C. Stable for one year after shipment.

## Storage Buffer:

PBS with 0.02% sodium azide and 50% glycerol pH 7.3.

Aliquoting is unnecessary for -20°C storage

\*\*\* 20ul sizes contain 0.1% BSA

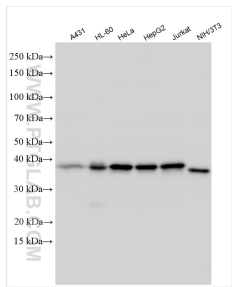
For technical support and original validation data for this product please contact:

T: 1 (888) 4PTGLAB (1-888-478-4522) (toll free in USA), or 1(312) 455-8498 (outside USA)

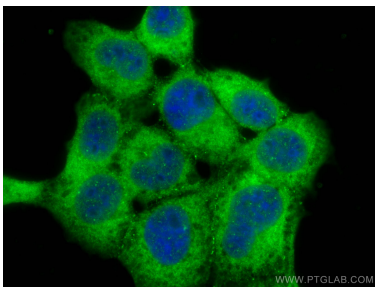
E: [proteintech@ptglab.com](mailto:proteintech@ptglab.com)  
W: [ptglab.com](http://ptglab.com)

**This product is exclusively available under Proteintech Group brand and is not available to purchase from any other manufacturer.**

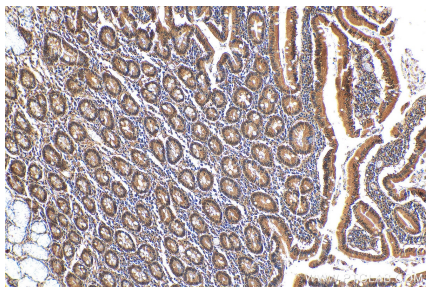
Selected Validation Data



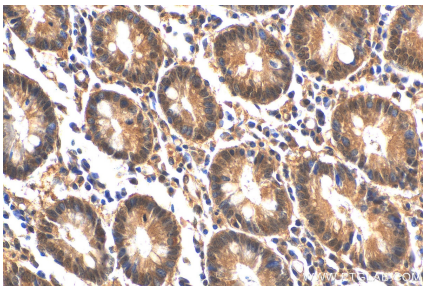
Various lysates were subjected to SDS PAGE followed by western blot with 10268-1-AP (IkB Alpha antibody) at dilution of 1:10000 incubated at room temperature for 1.5 hours.



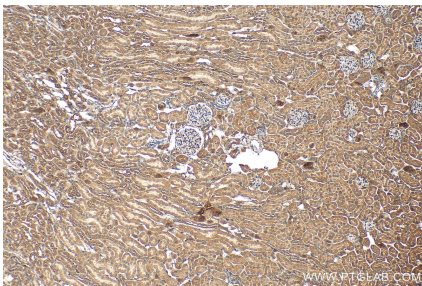
Immunofluorescent analysis of (-20°C Methanol) fixed A431 cells using IkB Alpha antibody (10268-1-AP) at dilution of 1:400 and CoraLite® 488-Conjugated AffiniPure Goat Anti-Rabbit IgG(H+L).



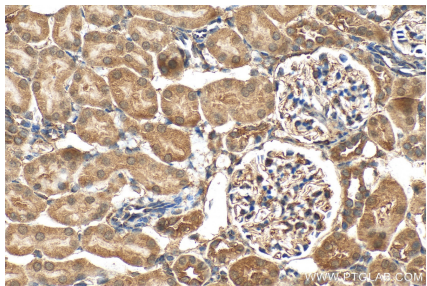
Immunohistochemical analysis of paraffin-embedded human stomach tissue slide using 10268-1-AP (IkB Alpha antibody) at dilution of 1:200 (under 10x lens).



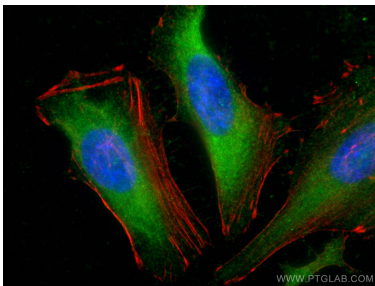
Immunohistochemical analysis of paraffin-embedded human stomach tissue slide using 10268-1-AP (IkB Alpha antibody) at dilution of 1:200 (under 40x lens).



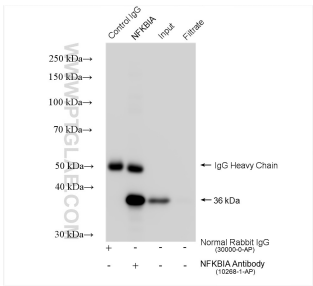
Immunohistochemical analysis of paraffin-embedded mouse kidney tissue slide using 10268-1-AP (IkB Alpha antibody) at dilution of 1:200 (under 10x lens). Heat mediated antigen retrieval with Tris-EDTA buffer (pH 9.0).



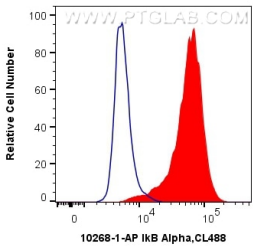
Immunohistochemical analysis of paraffin-embedded mouse kidney tissue slide using 10268-1-AP (IkB Alpha antibody) at dilution of 1:200 (under 40x lens). Heat mediated antigen retrieval with Tris-EDTA buffer (pH 9.0).



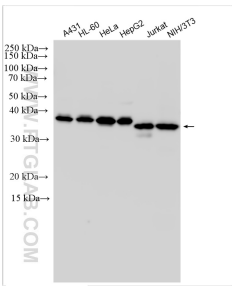
Immunofluorescent analysis of (-20°C Ethanol) fixed HeLa cells using IkB Alpha antibody (10268-1-AP) at dilution of 1:200 and CoraLite® 488-Conjugated AffiniPure Goat Anti-Rabbit IgG(H+L), CL594-phalloidin (red).



IP result of anti-IkB Alpha (IP:10268-1-AP, 4ug; Detection:10268-1-AP 1:15000) with HeLa cells lysate 1320 ug.



1X10<sup>6</sup> HeLa cells were intracellularly stained with 0.4 ug Anti-Human IkB Alpha (10268-1-AP) and CoraLite® 488-Conjugated AffiniPure Goat Anti-Rabbit IgG(H+L) at dilution 1:1000 (red), or 0.4 ug Control Antibody. Cells were fixed with 4% PFA and permeabilized with Flow Cytometry Perm Buffer (PF00011-C).



Various lysates were subjected to SDS PAGE followed by western blot with 10268-1-AP (I $\kappa$ B Alpha antibody) at dilution of 1:15000 incubated at room temperature for 1.5 hours.