

For Research Use Only

SNRPD1 Polyclonal antibody

Catalog Number: 10352-1-AP **3 Publications**



Basic Information

Catalog Number: 10352-1-AP	GenBank Accession Number: BC001721	Purification Method: Antigen affinity purification
Size: 150ul , Concentration: 700 µg/ml by Nanodrop and 200 µg/ml by Bradford method using BSA as the standard;	GeneID (NCBI): 6632	Recommended Dilutions: WB 1:500-1:1000
Source: Rabbit	Full Name: small nuclear ribonucleoprotein D1 polypeptide 16kDa	
Isotype: IgG	Calculated MW: 16 kDa	
Immunogen Catalog Number: AG0364	Observed MW: 13 kDa	

Applications

Tested Applications: WB, ELISA	Positive Controls: WB : HEK-293 cells, HL-60 cells
Cited Applications: IHC, WB	
Species Specificity: human	
Cited Species: human, mouse	

Background Information

Systemic lupus erythematosus is characterized by antibodies to a variety of intracellular self-antigens, such as dsDNA and Sm, and these serve as hallmarks in the diagnosis of systemic autoimmune diseases. SNRPD1 is one Sm components of the small nuclear ribonucleoprotein complexes(snRNPs). It's a charged protein scaffold to promote snRNP assembly or strengthen snRNP-snRNP interactions through nonspecific electrostatic contacts with RNA. This antibody detects 13-16 kDa (SMD1) and 30 kDa (SMD1/SMD2 dimer form; PMID:15525645).

Notable Publications

Author	Pubmed ID	Journal	Application
Jing Wang	34098070	Pharmacol Res	IHC,WB
Li Wang	29503206	Cell Chem Biol	WB
Chowdhury Azazul Islam Al	24006944	J Proteome Res	WB

Storage

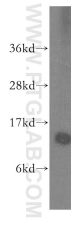
Storage:
Store at -20°C. Stable for one year after shipment.
Storage Buffer:
PBS with 0.02% sodium azide and 50% glycerol pH 7.3.
Aliquoting is unnecessary for -20°C storage

*** 20ul sizes contain 0.1% BSA

For technical support and original validation data for this product please contact:
T: 1 (888) 4PTGLAB (1-888-478-4522) (toll free in USA), or 1(312) 455-8498 (outside USA)
E: proteintech@ptglab.com
W: ptglab.com

This product is exclusively available under Proteintech Group brand and is not available to purchase from any other manufacturer.

Selected Validation Data



HEK-293 cells were subjected to SDS PAGE followed by western blot with 10352-1-AP (SNRPD1 antibody) at dilution of 1:500 incubated at room temperature for 1.5 hours.