

For Research Use Only

# GGA2 Polyclonal antibody

Catalog Number: 10356-1-AP

Featured Product

2 Publications



## Basic Information

<b>Catalog Number:</b> 10356-1-AP	<b>GenBank Accession Number:</b> BC000284	<b>Purification Method:</b> Antigen affinity purification
<b>Size:</b> 150ul, Concentration: 500 µg/ml by Nanodrop and 133 µg/ml by Bradford method using BSA as the standard;	<b>GeneID (NCBI):</b> 23062	<b>Recommended Dilutions:</b> WB 1:500-1:2000 IHC 1:200-1:800 IF 1:50-1:500
<b>Source:</b> Rabbit	<b>Full Name:</b> golgi associated, gamma adaptin ear containing, ARF binding protein 2	
<b>Isotype:</b> IgG	<b>Calculated MW:</b> 67 kDa	
<b>Immunogen Catalog Number:</b> AG0370	<b>Observed MW:</b> 67 kDa	

## Applications

<b>Tested Applications:</b> IF, IHC, WB, ELISA	<b>Positive Controls:</b>
<b>Cited Applications:</b> WB	<b>WB :</b> mouse brain tissue, HeLa cells, mouse adipose tissue, human kidney tissue
<b>Species Specificity:</b> human, mouse, rat	<b>IHC :</b> human colon cancer tissue, human stomach cancer tissue
<b>Cited Species:</b> human, rat	<b>IF :</b> HeLa cells,
<b>Note-IHC: suggested antigen retrieval with TE buffer pH 9.0; (*) Alternatively, antigen retrieval may be performed with citrate buffer pH 6.0</b>	

## Background Information

GGA2, also known as VEAR, belongs to the GGA protein family and regulates the trafficking of proteins between the trans-Golgi network and the lysosome. GGA2 has an amino-terminal VHS domain in its N terminus which mediates sorting of the mannose 6-phosphate receptors at the trans-Golgi network. They also contain a carboxy-terminal region with homology to the ear domain of gamma-adaptins.

## Notable Publications

Author	Pubmed ID	Journal	Application
Arunas Kvainickas	28935632	J Cell Biol	WB
Bing Li	35265682	Front Cardiovasc Med	WB

## Storage

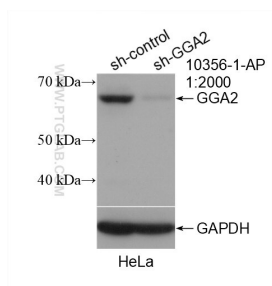
**Storage:**  
Store at -20°C. Stable for one year after shipment.  
**Storage Buffer:**  
PBS with 0.02% sodium azide and 50% glycerol pH 7.3.  
Aliquoting is unnecessary for -20°C storage

\*\*\* 20ul sizes contain 0.1% BSA

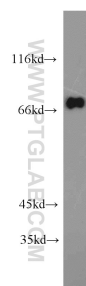
For technical support and original validation data for this product please contact:  
T: 1 (888) 4PTGLAB (1-888-478-4522) (toll free in USA), or 1(312) 455-8498 (outside USA)  
E: [proteintech@ptglab.com](mailto:proteintech@ptglab.com)  
W: [ptglab.com](http://ptglab.com)

This product is exclusively available under Proteintech Group brand and is not available to purchase from any other manufacturer.

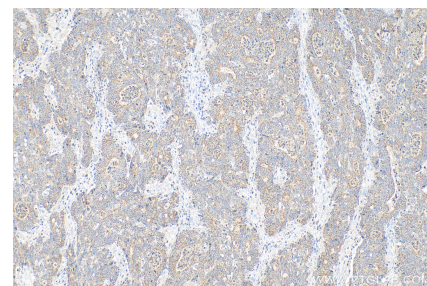
## Selected Validation Data



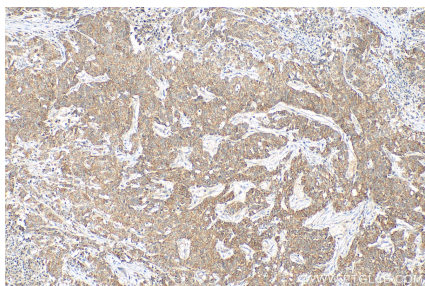
WB result of GGA2 antibody (10356-1-AP; 1:2000; incubated at room temperature for 1.5 hours) with sh-Control and sh-GGA2 transfected HeLa cells.



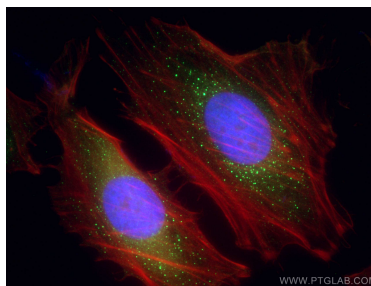
mouse brain tissue were subjected to SDS PAGE followed by western blot with 10356-1-AP (GGA2 antibody) at dilution of 1:1000 incubated at room temperature for 1.5 hours.



Immunohistochemical analysis of paraffin-embedded human colon cancer tissue slide using 10356-1-AP (GGA2 antibody) at dilution of 1:400 (under 10x lens). Heat mediated antigen retrieval with Tris-EDTA buffer (pH 9.0).



Immunohistochemical analysis of paraffin-embedded human stomach cancer tissue slide using 10356-1-AP (GGA2 antibody) at dilution of 1:400 (under 10x lens). Heat mediated antigen retrieval with Tris-EDTA buffer (pH 9.0).



Immunofluorescent analysis of (4% PFA) fixed HeLa cells using GGA2 antibody (10356-1-AP) at dilution of 1:200 and CoraLite®488-Conjugated AffiniPure Goat Anti-Rabbit IgG(H+L), CL594-Phalloidin (red).