

For Research Use Only

# HBS1L Polyclonal antibody

Catalog Number: 10359-1-AP

Featured Product

7 Publications



## Basic Information

<b>Catalog Number:</b> 10359-1-AP	<b>GenBank Accession Number:</b> BC001465	<b>Purification Method:</b> Antigen affinity purification
<b>Size:</b> 150ul , Concentration: 700 µg/ml by Nanodrop;	<b>GeneID (NCBI):</b> 10767	<b>Recommended Dilutions:</b> WB 1:5000-1:50000 IP 0.5-4.0 ug for 1.0-3.0 mg of total protein lysate IHC 1:20-1:200 IF 1:10-1:100
<b>Source:</b> Rabbit	<b>UNIPROT ID:</b> Q9Y450	
<b>Isotype:</b> IgG	<b>Full Name:</b> HBS1-like ( <i>S. cerevisiae</i> )	
<b>Immunogen Catalog Number:</b> AG0388	<b>Calculated MW:</b> 75 kDa	
	<b>Observed MW:</b> 75 kDa	

## Applications

<b>Tested Applications:</b> IF, IHC, IP, WB, ELISA	<b>Positive Controls:</b> WB : Jurkat cells, A2780 cells, mouse brain tissue, SKOV-3 cells IP : mouse brain tissue, IHC : human pancreas cancer tissue, IF : HepG2 cells,
<b>Cited Applications:</b> WB	
<b>Species Specificity:</b> human, mouse	
<b>Cited Species:</b> human, mouse	

**Note-IHC: suggested antigen retrieval with TE buffer pH 9.0; (\*) Alternatively, antigen retrieval may be performed with citrate buffer pH 6.0**

## Background Information

HBS1L (HBS1-like), also known as EF-1a or ERFS, is a 684 amino acid protein that belongs to the GTP-binding elongation factor family and exists as multiple alternatively spliced isoforms. Expressed in kidney, brain, heart, placenta, liver, muscle and pancreas, HSB1L is thought to play a role in controlling fetal hemoglobin levels, specifically influencing platelet, monocyte and erythrocyte hemoglobin content. The gene encoding HBS1L maps to a locus on human chromosome 6 that is associated with sickle cell anemia and beta-thalassemia, suggesting a role for HBS1L in the pathogenesis of blood disorders. This antibody specifically recognizes the 75kd human HBS1L protein.

## Notable Publications

Author	Pubmed ID	Journal	Application
John Rp Knight	25353634	Biochem J	WB
Michael K Slevin	24656133	Mol Cell	WB
Hussein H Aly	27281821	J Biol Chem	WB

## Storage

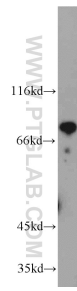
**Storage:**  
Store at -20°C. Stable for one year after shipment.  
**Storage Buffer:**  
PBS with 0.02% sodium azide and 50% glycerol pH 7.3.  
Aliquoting is unnecessary for -20°C storage

\*\*\* 20ul sizes contain 0.1% BSA

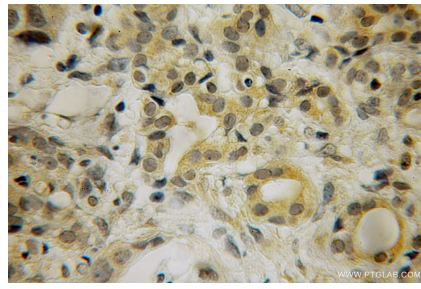
For technical support and original validation data for this product please contact:  
T: 1 (888) 4PTGLAB (1-888-478-4522) (toll free in USA), or 1(312) 455-8498 (outside USA)  
E: proteintech@ptglab.com  
W: ptglab.com

This product is exclusively available under Proteintech Group brand and is not available to purchase from any other manufacturer.

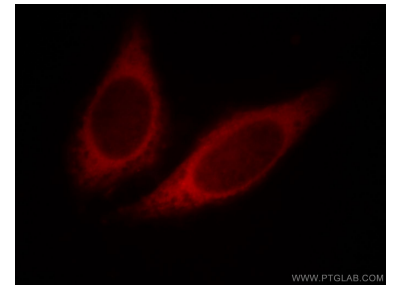
## Selected Validation Data



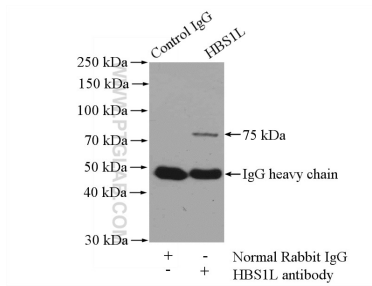
Jurkat cells were subjected to SDS PAGE followed by western blot with 10359-1-AP (HBS1L antibody) at dilution of 1:2000 incubated at room temperature for 1.5 hours.



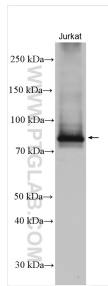
Immunohistochemical analysis of paraffin-embedded human pancreas cancer using 10359-1-AP (HBS1L antibody) at dilution of 1:50 (under 25x lens).



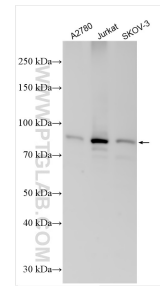
Immunofluorescent analysis of HepG2 cells, using HBS1L antibody 10359-1-AP at 1:25 dilution and Rhodamine-labeled goat anti-rabbit IgG (red).



IP result of anti-HBS1L (IP:10359-1-AP, 4ug; Detection:10359-1-AP 1:1000) with mouse brain tissue lysate 4000ug.



Jurkat cells were subjected to SDS PAGE followed by western blot with 10359-1-AP (HBS1L antibody) at dilution of 1:10000 incubated at room temperature for 1.5 hours.



Various lysates were subjected to SDS PAGE followed by western blot with 10359-1-AP (HBS1L antibody) at dilution of 1:8000 incubated at room temperature for 1.5 hours.