

For Research Use Only

# NRG1, isoform SMDF Polyclonal antibody



Catalog Number: 10527-1-AP

10 Publications

## Basic Information

Catalog Number:

10527-1-AP

Size:

150ul, Concentration: 550 µg/ml by Nanodrop;

Source:

Rabbit

Isotype:

IgG

Immunogen Catalog Number:

AG0803

GenBank Accession Number:

BC007675

GeneID (NCBI):

3084

UNIPROT ID:

Q02297

Full Name:

neuregulin 1

Calculated MW:

70 kDa

Observed MW:

70 kDa

Purification Method:

Antigen affinity purification

Recommended Dilutions:

WB 1:500-1:2000

IHC 1:50-1:500

IF 1:200-1:800

## Applications

Tested Applications:

WB, IF, IHC, ELISA

Cited Applications:

WB, IF, IHC

Species Specificity:

human, mouse

Cited Species:

human, rat, mouse

**Note-IHC: suggested antigen retrieval with TE buffer pH 9.0; (\*) Alternatively, antigen retrieval may be performed with citrate buffer pH 6.0**

Positive Controls:

WB : mouse liver tissue, SH-SY5Y cells

IHC : mouse stomach tissue, human stomach tissue, mouse cerebellum tissue

IF : MCF-7 cells,

## Background Information

Neuregulin 1 (NRG1) is a trophic factor that has been implicated in neural development, neurotransmission, and synaptic plasticity. NRG1 has multiple isoforms that are generated by usage of different promoters and alternative splicing of a single gene. NRG1 and its receptor ErbB tyrosine kinase are expressed not only in the developing nervous system, but also in the adult brain. Studies has been reported, the full-length type III NRG1 (NRG1 isoform SMDF) is more than 110 kDa, the 70-75 kDa band is a membrane bound form and it can be cleaved by an unknown enzyme releases the 45 kDa secreted form of NRG1(PMID: 21047912, PMID: 11425901). The antibody is specific to NRG1 isoform SMDF.

## Notable Publications

Author	Pubmed ID	Journal	Application
Xiaobao Gong	36218239	Phytother Res	WB
Dong-Min Shi	30486894	J Exp Clin Cancer Res	IHC
Dongmin Yu	35716406	Ecotoxicol Environ Saf	WB,IHC,IF

## Storage

Storage:

Store at -20°C. Stable for one year after shipment.

Storage Buffer:

PBS with 0.02% sodium azide and 50% glycerol pH 7.3.

Aliquoting is unnecessary for -20°C storage

\*\*\* 20ul sizes contain 0.1% BSA

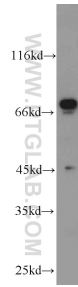
For technical support and original validation data for this product please contact:

T: 1 (888) 4PTGLAB (1-888-478-4522) (toll free in USA), or 1(312) 455-8498 (outside USA)

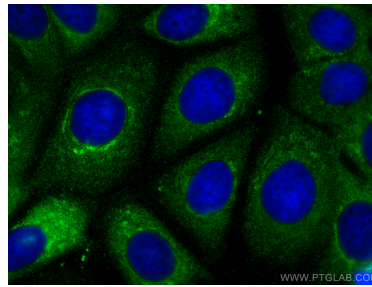
E: proteintech@ptglab.com  
W: ptglab.com

This product is exclusively available under Proteintech Group brand and is not available to purchase from any other manufacturer.

## Selected Validation Data



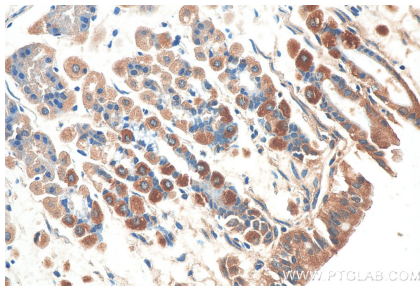
mouse liver tissue were subjected to SDS PAGE followed by western blot with 10527-1-AP (NRG1 antibody) at dilution of 1:1000 incubated at room temperature for 1.5 hours.



Immunofluorescent analysis of (-20°C Methanol) fixed MCF-7 cells using NRG1, isoform SMDF antibody (10527-1-AP) at dilution of 1:400 and CoraLite®488-Conjugated AffiniPure Goat Anti-Rabbit IgG(H+L).



Immunohistochemical analysis of paraffin-embedded mouse stomach tissue slide using 10527-1-AP (NRG1, isoform SMDF antibody) at dilution of 1:200 (under 10x lens). Heat mediated antigen retrieval with Tris-EDTA buffer (pH 9.0).



Immunohistochemical analysis of paraffin-embedded mouse stomach tissue slide using 10527-1-AP (NRG1, isoform SMDF antibody) at dilution of 1:200 (under 40x lens). Heat mediated antigen retrieval with Tris-EDTA buffer (pH 9.0).