

For Research Use Only

AHCYL1 Polyclonal antibody

Catalog Number: 10658-3-AP

Featured Product

20 Publications



Basic Information

Catalog Number: 10658-3-AP	GenBank Accession Number: BC007576	Purification Method: Antigen affinity purification
Size: 150ul , Concentration: 500 µg/ml by Nanodrop and 267 µg/ml by Bradford method using BSA as the standard;	GeneID (NCBI): 10768	Recommended Dilutions: WB 1:500-1:2000 IP 0.5-4.0 ug for 1.0-3.0 mg of total protein lysate IHC 1:100-1:400 IF 1:200-1:800
Source: Rabbit	Full Name: S-adenosylhomocysteine hydrolase-like 1	
Isotype: IgG	Calculated MW: 65 kDa	
Immunogen Catalog Number: AG1017	Observed MW: 60 kDa	

Applications

Tested Applications: IF, IHC, IP, WB, ELISA	Positive Controls: WB : Jurkat cells, HeLa cells, mouse thymus tissue IP : HeLa cells, IHC : human liver cancer tissue, IF : HeLa cells,
Cited Applications: IHC, IP, WB	
Species Specificity: human, mouse, rat	
Cited Species: human, chicken, rat, mouse, pig	
Note-IHC: suggested antigen retrieval with TE buffer pH 9.0; (*) Alternatively, antigen retrieval may be performed with citrate buffer pH 6.0	

Background Information

S-adenosylhomocysteine hydrolase-like protein 1 (AHCYL1), also known as IP3 receptor-binding protein released with IP3 (IRBIT), regulates IP3-induced Ca²⁺ release into the cytoplasm of cells(PMID:23145124). This protein is also named as DCAL, XPVKONA and belongs to the adenosylhomocysteinase family. AHCYL1 mRNA and protein are most abundant in the glandular epithelium of adenocarcinoma of cancerous, but not normal and AHCYL1 protein is predominantly in the nucleus(PMID:22826361). It has 2 isoforms produced by alternative splicing.

Notable Publications

Author	Pubmed ID	Journal	Application
Yimin Jia	27648945	J Agric Food Chem	WB
Demin Cai	27763549	Nutrients	WB
Xinwei Liu	33039524	Neuroscience	WB,IP

Storage

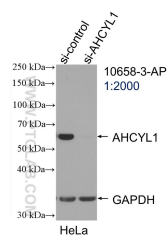
Storage:
Store at -20°C. Stable for one year after shipment.
Storage Buffer:
PBS with 0.02% sodium azide and 50% glycerol pH 7.3.
Aliquoting is unnecessary for -20°C storage

*** 20ul sizes contain 0.1% BSA

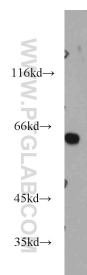
For technical support and original validation data for this product please contact:
T: 1 (888) 4PTGLAB (1-888-478-4522) (toll free in USA), or 1(312) 455-8498 (outside USA)
E: proteintech@ptglab.com
W: ptglab.com

This product is exclusively available under Proteintech Group brand and is not available to purchase from any other manufacturer.

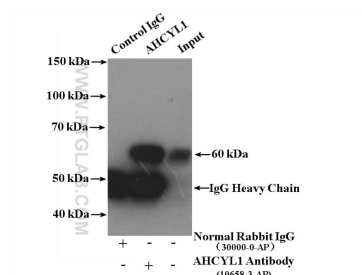
Selected Validation Data



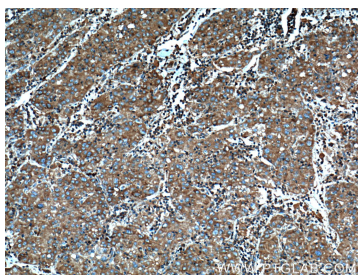
WB result of AHCYL1 antibody (10658-3-AP; 1:2000; incubated at room temperature for 1.5 hours) with sh-Control and sh-AHCYL1 transfected HeLa cells.



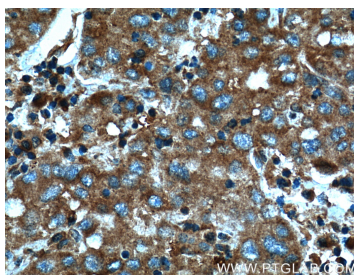
Jurkat cells were subjected to SDS PAGE followed by western blot with 10658-3-AP (AHCYL1 antibody) at dilution of 1:1000 incubated at room temperature for 1.5 hours.



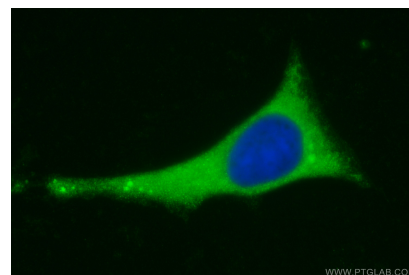
IP Result of anti-AHCYL1 (IP:10658-3-AP, 4ug; Detection:10658-3-AP 1:1000) with HeLa cells lysate 2400ug.



Immunohistochemical analysis of paraffin-embedded human liver cancer tissue slide using 10658-3-AP (AHCYL1 Antibody) at dilution of 1:200 (under 10x lens). Heat mediated antigen retrieval with Tris-EDTA buffer (pH 9.0).



Immunohistochemical analysis of paraffin-embedded human liver cancer tissue slide using 10658-3-AP (AHCYL1 Antibody) at dilution of 1:200 (under 40x lens). Heat mediated antigen retrieval with Tris-EDTA buffer (pH 9.0).



Immunofluorescent analysis of (-20°C Methanol) fixed HeLa cells using AHCYL1 antibody (10658-3-AP) at dilution of 1:400 and CoraLite®488-Conjugated AffiniPure Goat Anti-Rabbit IgG(H+L).