

For Research Use Only

SULT1C2 Polyclonal antibody

Catalog Number: 10662-1-AP **7 Publications**



Basic Information

Catalog Number: 10662-1-AP	GenBank Accession Number: BC005353	Purification Method: Antigen affinity purification
Size: 150ul , Concentration: 600 µg/ml by Nanodrop and 367 µg/ml by Bradford method using BSA as the standard;	GeneID (NCBI): 6819	Recommended Dilutions: WB 1:500-1:2000 IHC 1:50-1:500
Source: Rabbit	Full Name: sulfotransferase family, cytosolic, 1C, member 2	
Isotype: IgG	Calculated MW: 35 kDa	
Immunogen Catalog Number: AG1064	Observed MW: 30-35 kDa	

Applications

Tested Applications:

IHC, WB, ELISA

Cited Applications:

IHC, WB

Species Specificity:

human, mouse, rat

Cited Species:

human, rat

Note-IHC: suggested antigen retrieval with TE buffer pH 9.0; (*) Alternatively, antigen retrieval may be performed with citrate buffer pH 6.0

Positive Controls:

WB : human stomach tissue, human kidney tissue, human liver tissue, mouse liver tissue

IHC : human prostate cancer tissue,

Background Information

SULT1C2, also named as SULT1C1, ST1C2, ST1C1, and humSULTC2, belongs to the sulfotransferase 1 family. It is a sulfotransferase enzymes that catalyze the sulfate conjugation of many hormones, neurotransmitters, drugs, and xenobiotic compounds. SULT1C2 may be involved in the activation of carcinogenic hydroxylamines. It is responsible for transferring a sulfo moiety from PAPS to phenol-containing compounds.

Notable Publications

Author	Pubmed ID	Journal	Application
Shu Xiao-Hong XH	22096581	PLoS One	WB, IHC
Shuo Cong	33691721	Nutr Metab (Lond)	WB
Xu Zheng	30116486	Oxid Med Cell Longev	WB

Storage

Storage:

Store at -20°C. Stable for one year after shipment.

Storage Buffer:

PBS with 0.02% sodium azide and 50% glycerol pH 7.3.

Aliquoting is unnecessary for -20°C storage

***** 20ul sizes contain 0.1% BSA**

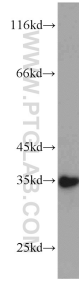
For technical support and original validation data for this product please contact:

T: 1 (888) 4PTGLAB (1-888-478-4522) (toll free in USA), or 1(312) 455-8498 (outside USA)

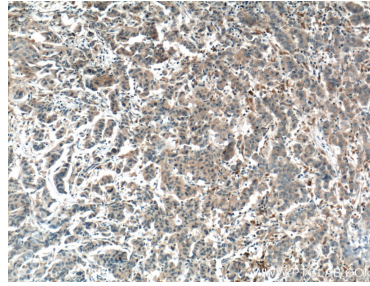
E: proteintech@ptglab.com
W: ptglab.com

This product is exclusively available under Proteintech Group brand and is not available to purchase from any other manufacturer.

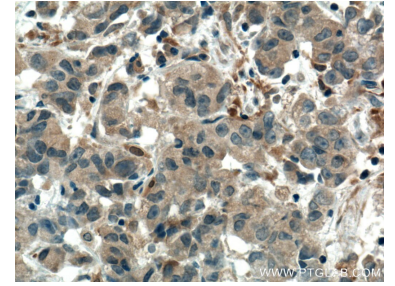
Selected Validation Data



human stomach tissue were subjected to SDS PAGE followed by western blot with 10662-1-AP (SULT1C2 antibody) at dilution of 1:1000 incubated at room temperature for 1.5 hours.



Immunohistochemical analysis of paraffin-embedded human prostate cancer tissue slide using 10662-1-AP (SULT1C2 Antibody) at dilution of 1:200 (under 10x lens). Heat mediated antigen retrieval with Tris-EDTA buffer (pH 9.0).



Immunohistochemical analysis of paraffin-embedded human prostate cancer tissue slide using 10662-1-AP (SULT1C2 Antibody) at dilution of 1:200 (under 40x lens). Heat mediated antigen retrieval with Tris-EDTA buffer (pH 9.0).