

For Research Use Only

CARD9 Polyclonal antibody

Catalog Number: 10669-1-AP

Featured Product

10 Publications



Basic Information

Catalog Number: 10669-1-AP	GenBank Accession Number: BC008877	Purification Method: Antigen affinity purification
Size: 150ul , Concentration: 350 µg/ml by Nanodrop and 300 µg/ml by Bradford method using BSA as the standard;	GeneID (NCBI): 64170	Recommended Dilutions: WB 1:500-1:3000
Source: Rabbit	Full Name: caspase recruitment domain family, member 9	
Isotype: IgG	Calculated MW: 62 kDa	
Immunogen Catalog Number: AG1057	Observed MW: 50-59 kDa	

Applications

Tested Applications: WB, ELISA	Positive Controls: WB : HL-60 cells, PC-3 cells
Cited Applications: IP, WB	
Species Specificity: human, mouse, rat	
Cited Species: human, mouse	

Background Information

CARD9, a member of the caspase recruitment domain (CARD) protein family, plays an important regulatory role in cell apoptosis. Defects in CARD9 are the cause of familial candidiasis type 2 (CANDF2) characterized by impaired clearance of fungal infections and results in colonization and infections of the mucosa or skin, predominantly with *Candida albicans*. CARD9 is highly expressed in spleen and regulate activation of NF-kappa-B by interaction with positive regulator of apoptosis BCL10 via the CARD domain.

Notable Publications

Author	Pubmed ID	Journal	Application
Carlos A Arango-Franco	30264381	J Clin Immunol	WB
Nikolaus Rieber	27777981	JCI Insight	WB
Xinyan Wu	34721438	Front Immunol	WB

Storage

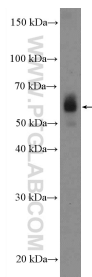
Storage:
Store at -20°C. Stable for one year after shipment.
Storage Buffer:
PBS with 0.02% sodium azide and 50% glycerol pH 7.3.
Aliquoting is unnecessary for -20°C storage

*** 20ul sizes contain 0.1% BSA

For technical support and original validation data for this product please contact:
T: 1 (888) 4PTGLAB (1-888-478-4522) (toll free in USA), or 1(312) 455-8498 (outside USA)
E: proteintech@ptglab.com
W: ptglab.com

This product is exclusively available under Proteintech Group brand and is not available to purchase from any other manufacturer.

Selected Validation Data



HL-60 cells were subjected to SDS PAGE followed by western blot with 10669-1-AP (CARD9 Antibody) at dilution of 1:1500 incubated at room temperature for 1.5 hours.