

For Research Use Only

# LSM5 Polyclonal antibody

Catalog Number: 10700-1-AP



## Basic Information

<b>Catalog Number:</b> 10700-1-AP	<b>GenBank Accession Number:</b> BC005938	<b>Purification Method:</b> Antigen affinity purification
<b>Size:</b> 150ul , Concentration: 800 µg/ml by Nanodrop;	<b>GeneID (NCBI):</b> 23658	<b>Recommended Dilutions:</b> WB 1:200-1:1000 IF 1:50-1:500
<b>Source:</b> Rabbit	<b>Full Name:</b> LSM5 homolog, U6 small nuclear RNA associated ( <i>S. cerevisiae</i> )	
<b>Isotype:</b> IgG	<b>Calculated MW:</b> 10 kDa	
<b>Immunogen Catalog Number:</b> AG1145	<b>Observed MW:</b> 10 kDa	

## Applications

**Tested Applications:**  
IF, WB, ELISA

**Species Specificity:**  
human, mouse

### Positive Controls:

**WB :** HeLa cells, HL-60 cells, human brain tissue, human placenta tissue, mouse ovary tissue

**IF :** HeLa cells,

## Background Information

### Storage

**Storage:**  
Store at -20°C. Stable for one year after shipment.

**Storage Buffer:**  
PBS with 0.02% sodium azide and 50% glycerol pH 7.3.

Aliquoting is unnecessary for -20°C storage

\*\*\* 20ul sizes contain 0.1% BSA

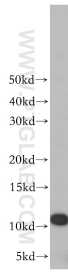
For technical support and original validation data for this product please contact:

T: 1 (888) 4PTGLAB (1-888-478-4522) (toll free in USA), or 1(312) 455-8498 (outside USA)

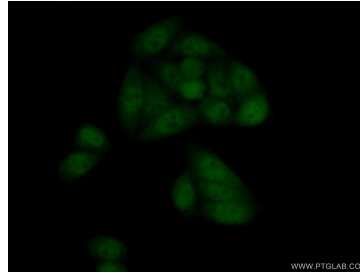
E: [proteintech@ptglab.com](mailto:proteintech@ptglab.com)  
W: [ptglab.com](http://ptglab.com)

This product is exclusively available under Proteintech Group brand and is not available to purchase from any other manufacturer.

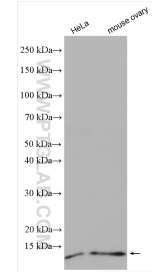
## Selected Validation Data



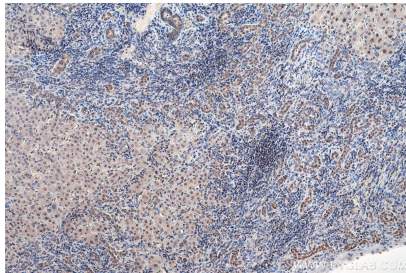
HeLa cells were subjected to SDS PAGE followed by western blot with 10700-1-AP (LSM5 antibody) at dilution of 1:100 incubated at room temperature for 1.5 hours.



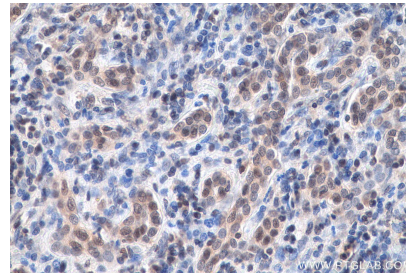
Immunofluorescent analysis of (10% Formaldehyde) fixed HeLa cells using 10700-1-AP (LSM5 antibody) at dilution of 1:50 and Alexa Fluor 488-conjugated AffiniPure Goat Anti-Rabbit IgG(H+L).



Various lysates were subjected to SDS PAGE followed by western blot with 10700-1-AP (LSM5 antibody) at dilution of 1:600 incubated at room temperature for 1.5 hours.



Immunohistochemical analysis of paraffin-embedded human liver cancer tissue slide using 10700-1-AP (LSM5 antibody) at dilution of 1:500 (under 10x lens). Heat mediated antigen retrieval with Tris-EDTA buffer (pH 9.0).



Immunohistochemical analysis of paraffin-embedded human liver cancer tissue slide using 10700-1-AP (LSM5 antibody) at dilution of 1:500 (under 40x lens). Heat mediated antigen retrieval with Tris-EDTA buffer (pH 9.0).