

For Research Use Only

Alpha Synuclein Polyclonal antibody

Catalog Number: 10842-1-AP

61 Publications



Basic Information

Catalog Number: 10842-1-AP	GenBank Accession Number: BC013293	Purification Method: Antigen affinity purification
Size: 150ul , Concentration: 590 µg/ml by Nanodrop;	GeneID (NCBI): 6622	Recommended Dilutions: WB 1:1000-1:6000 IHC 1:50-1:500 IF 1:200-1:800
Source: Rabbit	Full Name: synuclein, alpha (non A4 component of amyloid precursor)	
Isotype: IgG	Calculated MW: 14 kDa	
Immunogen Catalog Number: AG1285	Observed MW: 15-19 kDa	

Applications

Tested Applications: IF, IHC, WB, ELISA	Positive Controls:
Cited Applications: CoIP, ELISA, IF, IHC, IP, WB	WB : mouse brain tissue, human brain tissue, rat brain tissue
Species Specificity: human, mouse, rat	IHC : mouse brain tissue, human kidney tissue, human placenta tissue, human testis tissue, human skin tissue, human lung tissue
Cited Species: human, yeast, rat, zebra finch, mouse	IF : SH-SY5Y cells,
Note-IHC: suggested antigen retrieval with TE buffer pH 9.0; (*) Alternatively, antigen retrieval may be performed with citrate buffer pH 6.0	

Background Information

Alpha Synuclein (α -syn) is a 14-19 kDa phosphoprotein that is primarily localized to the presynaptic terminals of mature neurons, where it is involved in synaptic function and plasticity. α -syn has drawn intense interest ever since the late 1990s, when the first α -synuclein missense mutation was identified as a cause of familial Parkinson's disease (PD). Aggregated and hyper-phosphorylated forms of α -syn protein are the pathological hallmark of Lewy body disease, which includes Parkinson's disease (PD), diffuse Lewy body disease (DLBD), and Lewy body variant of Alzheimer's disease (LBV). This antibody can recognize all the isoforms of α -syn.

Notable Publications

Author	Pubmed ID	Journal	Application
Damilare D Akintade	33003464	Cells	WB
Kuo-Hsuan Chang	34551822	Stem Cell Res Ther	WB
Wen-Li Dong	34531546	Acta Pharmacol Sin	WB

Storage

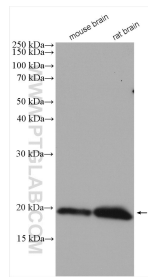
Storage:
Store at -20°C. Stable for one year after shipment.
Storage Buffer:
PBS with 0.02% sodium azide and 50% glycerol pH 7.3.
Aliquoting is unnecessary for -20°C storage

*** 20ul sizes contain 0.1% BSA

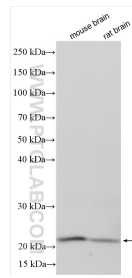
For technical support and original validation data for this product please contact:
T: 1 (888) 4PTGLAB (1-888-478-4522) (toll free in USA), or 1(312) 455-8498 (outside USA)
E: proteintech@ptglab.com
W: ptglab.com

This product is exclusively available under Proteintech Group brand and is not available to purchase from any other manufacturer.

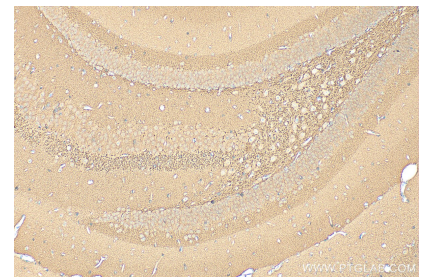
Selected Validation Data



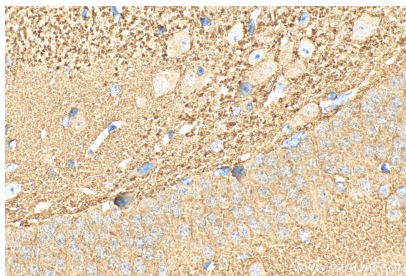
Various lysates were subjected to SDS PAGE followed by western blot with 10842-1-AP (alpha-synuclein antibody) at dilution of 1:800 incubated at room temperature for 1.5 hours.



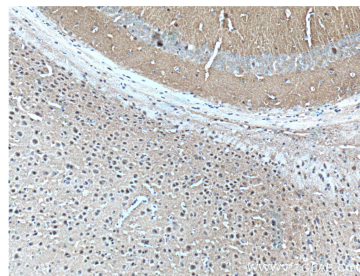
Various lysates were subjected to SDS PAGE followed by western blot with 10842-1-AP (Alpha Synuclein antibody) at dilution of 1:3000 incubated at room temperature for 1.5 hours.



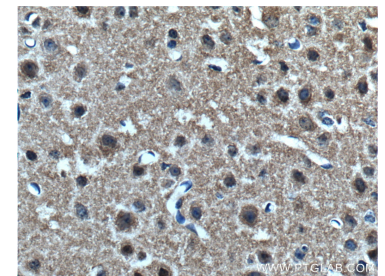
Immunohistochemical analysis of paraffin-embedded mouse brain tissue slide using 10842-1-AP (Alpha Synuclein antibody) at dilution of 1:200 (under 10x lens). Heat mediated antigen retrieval with Tris-EDTA buffer (pH 9.0).



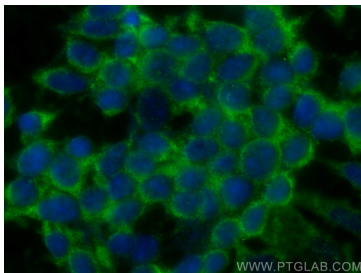
Immunohistochemical analysis of paraffin-embedded mouse brain tissue slide using 10842-1-AP (Alpha Synuclein antibody) at dilution of 1:200 (under 40x lens). Heat mediated antigen retrieval with Tris-EDTA buffer (pH 9.0).



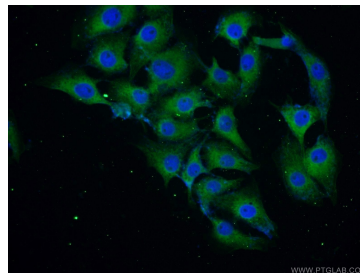
Immunohistochemical analysis of paraffin-embedded mouse brain tissue slide using 10842-1-AP (alpha-synuclein antibody at dilution of 1:200 (under 10x lens). Heat mediated antigen retrieval with Tris-EDTA buffer (pH 9.0).



Immunohistochemical analysis of paraffin-embedded mouse brain tissue slide using 10842-1-AP (alpha-synuclein antibody at dilution of 1:200 (under 40x lens). Heat mediated antigen retrieval with Tris-EDTA buffer (pH 9.0).



Immunofluorescent analysis of (-20°C Ethanol) fixed SH-SY5Y cells using Alpha Synuclein antibody (10842-1-AP) at dilution of 1:400 and CoraLite®488-Conjugated AffiniPure Goat Anti-Rabbit IgG(H+L).



Immunofluorescent analysis of SH-SY5Y cells using 10842-1-AP (alpha-synuclein antibody) at dilution of 1:25 and Alexa Fluor 488-conjugated AffiniPure Goat Anti-Rabbit IgG(H+L).