

For Research Use Only

Endoglin/CD105 Polyclonal antibody



Catalog Number: 10862-1-AP

Featured Product

25 Publications

Basic Information

Catalog Number:

10862-1-AP

Size:

150ul, Concentration: 500 µg/ml by Nanodrop;

Source:

Rabbit

Isotype:

IgG

Immunogen Catalog Number:

AG1287

GenBank Accession Number:

BC014271

GeneID (NCBI):

2022

Full Name:

endoglin

Calculated MW:

71 kDa

Observed MW:

75-90 kDa, 170-180 kDa

Purification Method:

Antigen affinity purification

Recommended Dilutions:

WB 1:500-1:1000

IP 0.5-4.0 µg for 1.0-3.0 mg of total protein lysate

IHC 1:1000-1:4000

Applications

Tested Applications:

FC, IHC, IP, WB, ELISA

Cited Applications:

FC, IF, IHC, WB

Species Specificity:

human, mouse, rat

Cited Species:

human, rat, mouse, Bovine

Positive Controls:

WB: human placenta tissue,

IP: mouse lung tissue,

IHC: human breast cancer tissue, rat kidney tissue, human placenta tissue, human liver cancer tissue

Note-IHC: suggested antigen retrieval with TE buffer pH 9.0; (*) Alternatively, antigen retrieval may be performed with citrate buffer pH 6.0

Background Information

Endoglin (ENG, CD105) is a homodimeric cell membrane glycoprotein of 180 kDa, composed of disulphide-linked subunits of 90-95 kDa. Endoglin is a proliferation-associated and hypoxia-inducible protein mainly expressed on vascular endothelial cells. It acts as an accessory receptor for transforming growth factor beta (TGF-β) and is involved in vascular development and remodelling. The important role of Endoglin in angiogenesis and in tumor progression makes it an ideal target for antiangiogenic therapy and a good marker for tumor prognosis. (PMID: 1326540; 14528280; 21737653; 12773481)

Notable Publications

Author	Pubmed ID	Journal	Application
Qian Huang	36210850	Front Pharmacol	IHC, WB
Yuri Miyakawa	36087522	Arch Oral Biol	IF
Tao Chen	34822812	Exp Cell Res	WB, IHC

Storage

Storage:

Store at -20°C. Stable for one year after shipment.

Storage Buffer:

PBS with 0.02% sodium azide and 50% glycerol pH 7.3.

Aliquoting is unnecessary for -20°C storage

*** 20ul sizes contain 0.1% BSA

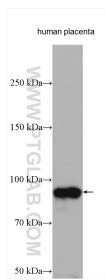
For technical support and original validation data for this product please contact:

T: 1 (888) 4PTGLAB (1-888-478-4522) (toll free in USA), or 1(312) 455-8498 (outside USA)

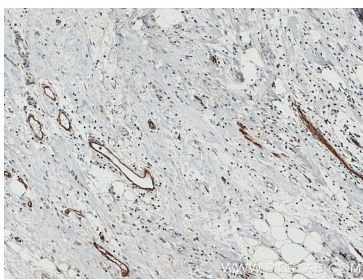
E: proteintech@ptglab.com
W: ptglab.com

This product is exclusively available under Proteintech Group brand and is not available to purchase from any other manufacturer.

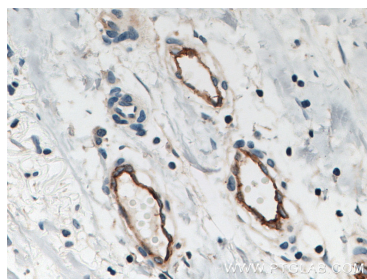
Selected Validation Data



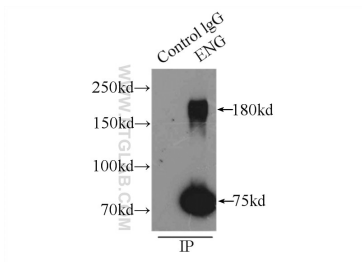
human placenta tissue was subjected to SDS PAGE followed by western blot with 10862-1-AP (Endoglin/CD105 antibody) at dilution of 1:500 incubated at room temperature for 1.5 hours.



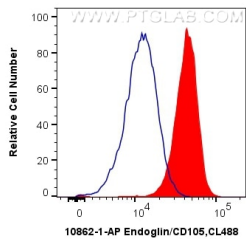
Immunohistochemical analysis of paraffin-embedded human breast cancer tissue slide using 10862-1-AP (Endoglin/CD105 antibody) at dilution of 1:4000 (under 10x lens. Heat mediated antigen retrieval with Tris-EDTA buffer (pH 9.0).



Immunohistochemical analysis of paraffin-embedded human breast cancer tissue slide using 10862-1-AP (Endoglin/CD105 antibody) at dilution of 1:4000 (under 40x lens. Heat mediated antigen retrieval with Tris-EDTA buffer (pH 9.0).



IP Result of anti-Endoglin/CD105 (IP:10862-1-AP, 3ug; Detection:10862-1-AP 1:300) with mouse lung tissue lysate 4000ug.



1X10^6 THP-1 cells were intracellularly stained with 0.4 ug Anti-Human Endoglin/CD105 (10862-1-AP) and CoraLite® 488-Conjugated AffiniPure Goat Anti-Rabbit IgG(H+L) at dilution 1:1000 (red), or 0.4 ug Isotype Control (blue). Cells were fixed with 4% PFA and permeabilized with Flow Cytometry Perm Buffer (PF00011-C).