

Myosin Light Chain 2/MLC-2V

Polyclonal antibody

 Catalog Number: **10906-1-AP** **194 Publications**

Basic Information

Catalog Number: 10906-1-AP	GenBank Accession Number: BC015821	Purification Method: Antigen affinity purification
Size: 150ul , Concentration: 300 µg/ml by Nanodrop;	GeneID (NCBI): 4633	Recommended Dilutions: WB 1:2000-1:16000
Source: Rabbit	UNIPROT ID: P10916	IP 0.5-4.0 ug for 1.0-3.0 mg of total protein lysate
Isotype: IgG	Full Name: myosin, light chain 2, regulatory, cardiac, slow	IHC 1:400-1:1600
Immunogen Catalog Number: AG1356	Calculated MW: 19 kDa	IF 1:50-1:500
	Observed MW: 19 kDa	

Applications

Tested Applications: FC, IF, IHC, IP, WB, ELISA	Positive Controls:
Cited Applications: FC, IF, IHC, WB	WB : mouse heart tissue, rat heart tissue
Species Specificity: human, mouse, rat, zebrafish	IP : mouse heart tissue,
Cited Species: human, rat, mouse, monkey, zebrafish, pig	IHC : mouse heart tissue, human heart tissue, rat heart tissue
Note-IHC: suggested antigen retrieval with TE buffer pH 9.0; (*) Alternatively, antigen retrieval may be performed with citrate buffer pH 6.0	IF : mouse heart tissue,

Background Information

MYL2, also named as MLC-2v and MLC-2, is ventricular/cardiac muscle isoform. Defects in MYL2 are the cause of cardiomyopathy familial hypertrophic type 10 (CMH10). Defects in MYL2 are the cause of cardiomyopathy familial hypertrophic with mid-left ventricular chamber type 2 (MVC2). MYL2 has been widely used as a marker of mature ventricular cardiomyocytes. There are four genes of myosin light chain 2 (MLC2): MYL2 (MLC2v), MYL5, MYL7 (MLC2a) and MYL9 (MLC2c). While usually myosin light chain 2 is referred to MYL2.

Notable Publications

Author	Pubmed ID	Journal	Application
Arvin H Soepriatna	34777603	Cell Mol Bioeng	IF
Bin Li	28962583	Stem Cell Res Ther	IF
A Gaignerie	30254308	Sci Rep	IF

Storage

Storage:
Store at -20°C. Stable for one year after shipment.

Storage Buffer:
PBS with 0.02% sodium azide and 50% glycerol pH 7.3.

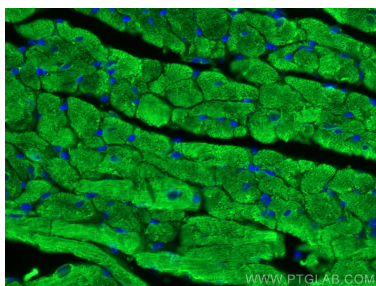
Aliquoting is unnecessary for -20°C storage

*** 20ul sizes contain 0.1% BSA

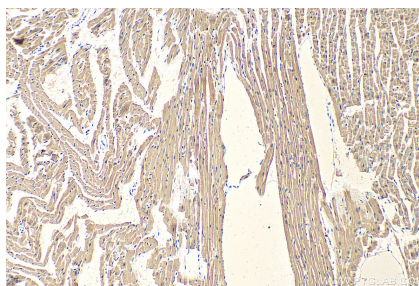
For technical support and original validation data for this product please contact:
 T: 1 (888) 4PTGLAB (1-888-478-4522) (toll free in USA), or 1(312) 455-8498 (outside USA)
 E: proteintech@ptglab.com
 W: ptglab.com

This product is exclusively available under Proteintech Group brand and is not available to purchase from any other manufacturer.

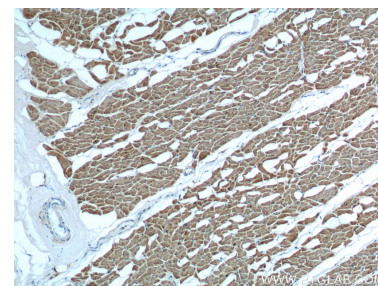
Selected Validation Data



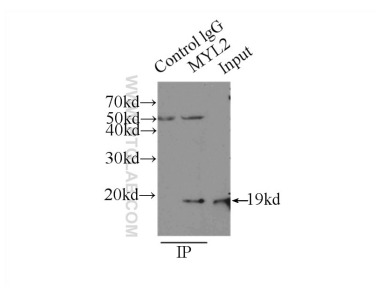
Immunofluorescent analysis of (4% PFA) fixed mouse heart tissue using Myosin Light Chain 2/MLC-2V antibody (10906-1-AP) at dilution of 1:200 and CoraLite®488-Conjugated AffiniPure Goat Anti-Rabbit IgG(H+L).



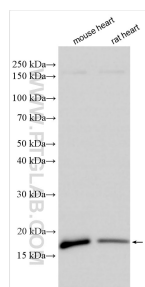
Immunohistochemical analysis of paraffin-embedded mouse heart tissue slide using 10906-1-AP (Myosin Light Chain 2/MLC-2V antibody) at dilution of 1:800 (under 10x lens). Heat mediated antigen retrieval with Tris-EDTA buffer (pH 9.0).



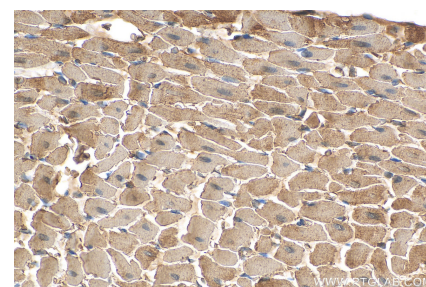
Immunohistochemical analysis of paraffin-embedded human heart tissue slide using 10906-1-AP (Myosin Light Chain 2 antibody) at dilution of 1:200 (under 10x lens).



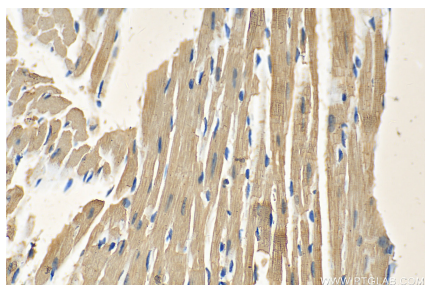
IP result of anti-Myosin Light Chain 2/MLC-2V (IP:10906-1-AP, 3ug; Detection:10906-1-AP 1:500) with mouse heart tissue lysate 6000ug.



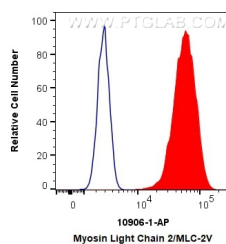
Various lysates were subjected to SDS PAGE followed by western blot with 10906-1-AP (Myosin Light Chain 2/MLC-2V antibody) at dilution of 1:8000 incubated at room temperature for 1.5 hours.



Immunohistochemical analysis of paraffin-embedded rat heart tissue slide using 10906-1-AP (Myosin Light Chain 2/MLC-2V antibody) at dilution of 1:400 (under 40x lens). Heat mediated antigen retrieval with Tris-EDTA buffer (pH 9.0).



Immunohistochemical analysis of paraffin-embedded mouse heart tissue slide using 10906-1-AP (Myosin Light Chain 2/MLC-2V antibody) at dilution of 1:800 (under 40x lens). Heat mediated antigen retrieval with Tris-EDTA buffer (pH 9.0).



1X10⁶ C2C12 cells were intracellularly stained with 0.4 ug Anti-Human Myosin Light Chain 2/MLC-2V (10906-1-AP) and CoraLite®488-Conjugated AffiniPure Goat Anti-Rabbit IgG(H+L) at dilution 1:1000 (red), or 0.4 ug Control Antibody. Cells were fixed with 4% PFA and permeabilized with Flow Cytometry Perm Buffer (PF00011-C).