

For Research Use Only

Cirhin Polyclonal antibody

Catalog Number: 11057-1-AP



Basic Information

Catalog Number: 11057-1-AP	GenBank Accession Number: BC009348	Purification Method: Antigen affinity purification
Size: 150ul , Concentration: 500 µg/ml by Nanodrop and 300 µg/ml by Bradford method using BSA as the standard;	GeneID (NCBI): 84916	Recommended Dilutions: WB 1:500-1:2000 IP 0.5-4.0 ug for IP and 1:500-1:1000 for WB
Source: Rabbit	Full Name: cirrhosis, autosomal recessive 1A (cirhin)	IHC 1:50-1:500
Isotype: IgG	Calculated MW: 77 kDa	
Immunogen Catalog Number: AG1494	Observed MW: 70-77 kDa	

Applications

Tested Applications: IHC, IP, WB, ELISA	Positive Controls:
Species Specificity: human, mouse, rat	WB: Neuro-2a cells,
Note-IHC: suggested antigen retrieval with TE buffer pH 9.0; (*) Alternatively, antigen retrieval may be performed with citrate buffer pH 6.0	IP: HepG2 cells,
	IHC: mouse brain tissue,

Background Information

Cirhin is a protein that in humans is encoded by the CIRH1A gene. Mutation of this gene has been associated with North American Indian childhood cirrhosis, a severe intrahepatic cholestasis that results in transient neonatal jaundice, and progresses to periportal fibrosis and cirrhosis in childhood and adolescence. (PMID: 12417987). Catalog#11057-1-AP is a rabbit polyclonal antibody raised against the full-length of human CIRHIN.

Storage

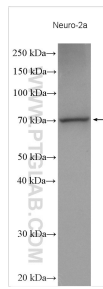
Storage:
Store at -20°C. Stable for one year after shipment.
Storage Buffer:
PBS with 0.02% sodium azide and 50% glycerol pH 7.3.
Aliquoting is unnecessary for -20°C storage

*** 20ul sizes contain 0.1% BSA

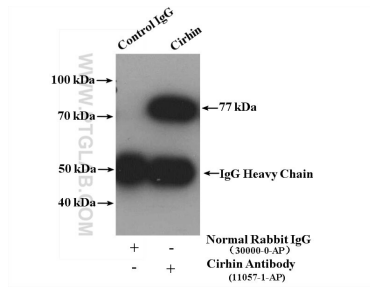
For technical support and original validation data for this product please contact:
T: 1 (888) 4PTGLAB (1-888-478-4522) (toll free in USA), or 1(312) 455-8498 (outside USA) E: proteintech@ptglab.com W: ptglab.com

This product is exclusively available under Proteintech Group brand and is not available to purchase from any other manufacturer.

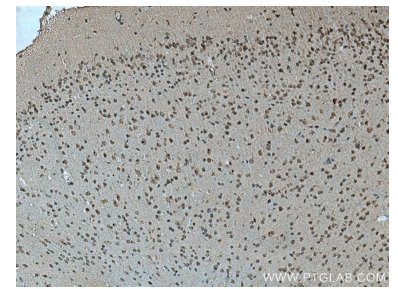
Selected Validation Data



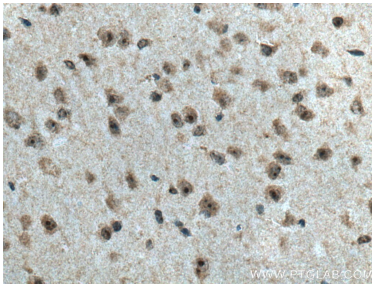
Neuro-2a cells were subjected to SDS PAGE followed by western blot with 11057-1-AP (Cirhin antibody) at dilution of 1:1000 incubated at room temperature for 1.5 hours.



IP result of anti-Cirhin (IP:11057-1-AP, 4ug; Detection:11057-1-AP 1:700) with HepG2 cells lysate 2600 ug.



Immunohistochemical analysis of paraffin-embedded mouse brain tissue slide using 11057-1-AP (Cirhin antibody) at dilution of 1:200 (under 10x lens). Heat mediated antigen retrieval with Tris-EDTA buffer (pH 9.0).



Immunohistochemical analysis of paraffin-embedded mouse brain tissue slide using 11057-1-AP (Cirhin antibody) at dilution of 1:200 (under 40x lens). Heat mediated antigen retrieval with Tris-EDTA buffer (pH 9.0).