

For Research Use Only

# CTDSP2 Polyclonal antibody

Catalog Number: 11116-1-AP



## Basic Information

<b>Catalog Number:</b> 11116-1-AP	<b>GenBank Accession Number:</b> BC065920	<b>Purification Method:</b> Antigen affinity purification
<b>Size:</b> 150ul , Concentration: 500 µg/ml by Nanodrop;	<b>GeneID (NCBI):</b> 10106	<b>Recommended Dilutions:</b> WB 1:200-1:1000 IHC 1:20-1:200
<b>Source:</b> Rabbit	<b>Full Name:</b> CTD (carboxy-terminal domain, RNA polymerase II, polypeptide A) small phosphatase 2	
<b>Isotype:</b> IgG	<b>Calculated MW:</b> 31 kDa	
<b>Immunogen Catalog Number:</b> AG1601	<b>Observed MW:</b> 31 kDa	

## Applications

### Tested Applications:

IHC, WB, ELISA

### Species Specificity:

human, mouse, rat

**Note-IHC: suggested antigen retrieval with TE buffer pH 9.0; (\*) Alternatively, antigen retrieval may be performed with citrate buffer pH 6.0**

### Positive Controls:

WB : human kidney tissue, HepG2 cells, K-562 cells

IHC : human pancreas cancer tissue,

## Background Information

CTDSPs are C-class phosphatases that act on Ser 5 of the Pol II C-terminal domain (CTD) to decrease transcription [PMID:15681389]. CTDSP enzymatic activity is required for REST function, and knockdown of CTDSP induces the neuronal differentiation of mouse embryonic carcinoma P19 cells. CTDSP2 has been shown to enhance TGF- $\beta$  signaling by the dephosphorylation of SMAD proteins and attenuates androgen receptor-mediated transcription [PMID:16724108]. It negatively regulates RNA polymerase II transcription by controlling the transition from initiation/capping to processive transcript elongation. It was recruited by REST to neuronal genes that contain RE-1 elements, leading to neuronal gene silencing in non-neuronal cells [PMID: 12721286].

## Storage

### Storage:

Store at -20°C. Stable for one year after shipment.

### Storage Buffer:

PBS with 0.02% sodium azide and 50% glycerol pH 7.3.

Aliquoting is unnecessary for -20°C storage

\*\*\* 20ul sizes contain 0.1% BSA

For technical support and original validation data for this product please contact:

T: 1 (888) 4PTGLAB (1-888-478-4522) (toll free in USA), or 1(312) 455-8498 (outside USA)

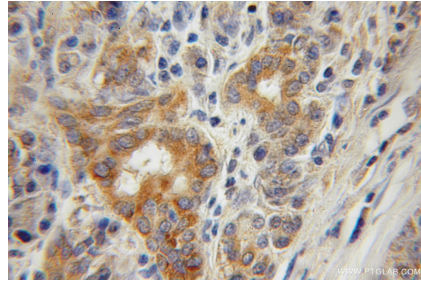
E: proteintech@ptglab.com  
W: ptglab.com

This product is exclusively available under Proteintech Group brand and is not available to purchase from any other manufacturer.

## Selected Validation Data



human kidney tissue were subjected to SDS PAGE followed by western blot with 11116-1-AP (CTDSP2 antibody) at dilution of 1:400 incubated at room temperature for 1.5 hours.



Immunohistochemical analysis of paraffin-embedded human pancreas cancer using 11116-1-AP (CTDSP2 antibody) at dilution of 1:50 (under 10x lens).