

For Research Use Only

CRIPT Polyclonal antibody

Catalog Number: 11211-1-AP

Featured Product

2 Publications



Basic Information

Catalog Number:

11211-1-AP

Size:

150ul, Concentration: 900 µg/ml by Nanodrop and 473 µg/ml by Bradford method using BSA as the standard;

Source:

Rabbit

Isotype:

IgG

Immunogen Catalog Number:

AG1708

GenBank Accession Number:

BC018653

GeneID (NCBI):

9419

Full Name:

cysteine-rich PDZ-binding protein

Calculated MW:

11 kDa

Observed MW:

15 kDa

Purification Method:

Antigen affinity purification

Recommended Dilutions:

WB 1:500-1:1000

IP 0.5-4.0 µg for IP and 1:500-1:1000 for WB

IF 1:20-1:200

Applications

Tested Applications:

IF, IP, WB, ELISA

Cited Applications:

CoIP, IP, WB

Species Specificity:

human, mouse, rat

Cited Species:

rat

Positive Controls:

WB : L02 cells,

IP : L02 cells,

IF : L02 cells,

Background Information

The clustering and immobilization of receptors and ion channels located at specific subcellular sites are believed to be mediated by intracellular proteins that attach these membrane proteins to the cytoskeleton. Receptors and ion channels interact with cytoplasmic proteins, which involved in the modulation or downstream signaling mechanisms of the receptor/ion channel. CRIPT is the protein that binds to the third PDZ (PDZ3) domain of PSD95, which binds to and clusters a variety of membrane proteins, including Shaker-type potassium channel subunits and NMDA receptor NR2 subunits, via its first 2 N-terminal PDZ domains

Notable Publications

Author	Pubmed ID	Journal	Application
Anton Omelchenko	32157575	Mol Neurobiol	WB, CoIP
Lei Zhang	29218323	eNeuro	WB, IP

Storage

Storage:

Store at -20°C. Stable for one year after shipment.

Storage Buffer:

PBS with 0.02% sodium azide and 50% glycerol pH 7.3.

Aliquoting is unnecessary for -20°C storage

*** 20ul sizes contain 0.1% BSA

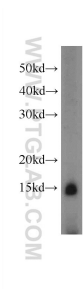
For technical support and original validation data for this product please contact:

T: 1 (888) 4PTGLAB (1-888-478-4522) (toll free in USA), or 1(312) 455-8498 (outside USA)

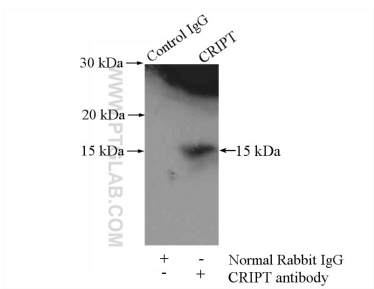
E: proteintech@ptglab.com
W: ptglab.com

This product is exclusively available under Proteintech Group brand and is not available to purchase from any other manufacturer.

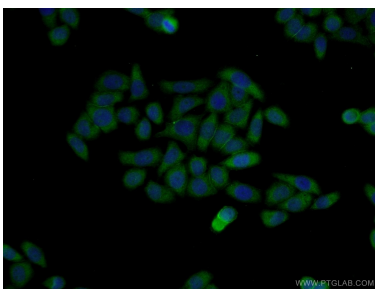
Selected Validation Data



L02 cells were subjected to SDS PAGE followed by western blot with 11211-1-AP (CRIPT antibody) at dilution of 1:500 incubated at room temperature for 1.5 hours.



IP Result of anti-CRIPT (IP:11211-1-AP, 4ug; Detection:11211-1-AP 1:500) with L02 cells lysate 1800ug.



Immunofluorescent analysis of L02 cells using 11211-1-AP (CRIPT antibody) at dilution of 1:50 and Alexa Fluor 488-conjugated AffiniPure Goat Anti-Rabbit IgG(H+L).