

For Research Use Only

LPXN Polyclonal antibody

Catalog Number: 11307-1-AP **1 Publications**



Basic Information

Catalog Number: 11307-1-AP	GenBank Accession Number: BC019035	Purification Method: Antigen affinity purification
Size: 150ul , Concentration: 450 µg/ml by Nanodrop and 420 µg/ml by Bradford method using BSA as the standard;	GeneID (NCBI): 9404	Recommended Dilutions: WB 1:500-1:1000 IHC 1:50-1:500 IF 1:20-1:200
Source: Rabbit	Full Name: Leupaxin	
Isotype: IgG	Calculated MW: 43 kDa	
Immunogen Catalog Number: AG1845	Observed MW: 50-60 kDa	

Applications

Tested Applications: IF, IHC, WB, ELISA	Positive Controls: WB : PC-3 cells, RAW 264.7 cells
Cited Applications: IF	IHC : human lung cancer tissue, human tonsillitis tissue, human prostate cancer tissue
Species Specificity: human, mouse, rat	IF : PC-3 cells,
Cited Species: mouse	

Note-IHC: suggested antigen retrieval with TE buffer pH 9.0; (*) Alternatively, antigen retrieval may be performed with citrate buffer pH 6.0

Background Information

LPXN, also known as Leupaxin, LDPL, belongs to the paxillin family. LPXN contributes to the regulation of cell adhesion, spreading, and cell migration and acts as a negative regulator in integrin-mediated cell adhesion events (PMID: 20543562). LPXN has four leucine-rich LD-motifs in the N-terminus and four LIM domains in the C-terminus. It may function in cell type-specific signaling by associating with PYK2, a member of the focal adhesion kinase family (PMID: 9565592). Studies in breast cancer implicate LPXN is involved in the regulation of ER action as a co-factor (PMID: 25955236). LPXN is expressed in prostate cancer cells and its expression intensity is directly linked to PCa progression (PMID: 18451096).

Notable Publications

Author	Pubmed ID	Journal	Application
Xinming Wang	34118218	J Mol Cell Cardiol	IF

Storage

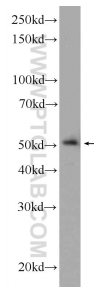
Storage:
Store at -20°C. Stable for one year after shipment.
Storage Buffer:
PBS with 0.02% sodium azide and 50% glycerol pH 7.3.
Aliquoting is unnecessary for -20°C storage

***** 20ul sizes contain 0.1% BSA**

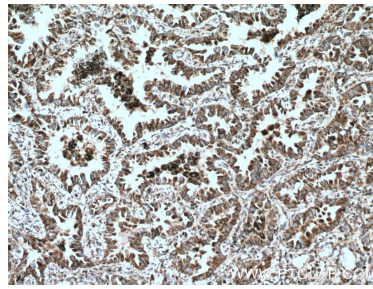
For technical support and original validation data for this product please contact:
T: 1 (888) 4PTGLAB (1-888-478-4522) (toll free in USA), or 1(312) 455-8498 (outside USA)
E: proteintech@ptglab.com
W: ptglab.com

This product is exclusively available under Proteintech Group brand and is not available to purchase from any other manufacturer.

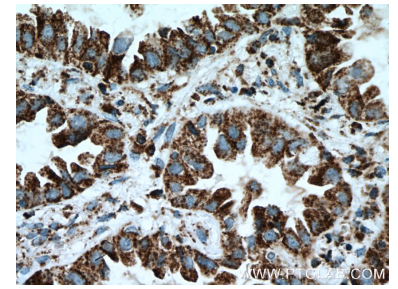
Selected Validation Data



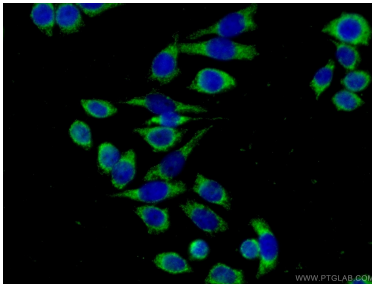
PC-3 cells were subjected to SDS PAGE followed by western blot with 11307-1-AP (LPXN Antibody) at dilution of 1:600 incubated at room temperature for 1.5 hours.



Immunohistochemical analysis of paraffin-embedded human lung cancer tissue slide using 11307-1-AP (LPXN antibody) at dilution of 1:200 (under 10x lens. Heat mediated antigen retrieval with Tris-EDTA buffer (pH 9.0).



Immunohistochemical analysis of paraffin-embedded human lung cancer tissue slide using 11307-1-AP (LPXN antibody) at dilution of 1:200 (under 40x lens. Heat mediated antigen retrieval with Tris-EDTA buffer (pH 9.0).



Immunofluorescent analysis of (-20°C Ethanol) fixed PC-3 cells using 11307-1-AP (LPXN antibody) at dilution of 1:50 and Alexa Fluor 488-conjugated AffiniPure Goat Anti-Rabbit IgG(H+L).