

## GOLGA2/GM130 Polyclonal antibody

Catalog Number: 11308-1-AP

Featured Product

109 Publications

## Basic Information

## Catalog Number:

11308-1-AP

## Size:

150ul, Concentration: 600 µg/ml by Nanodrop;

## Source:

Rabbit

## Isotype:

IgG

## Immunogen Catalog Number:

AG1848

## GenBank Accession Number:

BC014188

## GeneID (NCBI):

2801

## UNIPROT ID:

Q08379

## Full Name:

golgi autoantigen, golgin subfamily a, 2

## Calculated MW:

111 kDa

## Observed MW:

130 kDa

## Purification Method:

Antigen affinity purification

## Recommended Dilutions:

WB 1:5000-1:50000

IHC 1:50-1:200

IF 1:50-1:500

## Applications

## Tested Applications:

WB, IF, FC, IHC, ELISA

## Cited Applications:

WB, IF, IHC

## Species Specificity:

human, Canine

## Cited Species:

human, monkey, Hamster

**Note-IHC: suggested antigen retrieval with TE buffer pH 9.0; (\*) Alternatively, antigen retrieval may be performed with citrate buffer pH 6.0**

## Positive Controls:

WB : A549 cells, HeLa cells, human spleen tissue, HEK-293 cells, MCF-7 cells

IHC : human testis tissue,

IF : HeLa cells, HEK-293 cells, HepG2 cells, MDCK cells

## Background Information

GOLGA2, also known as GM130, is a 130 kDa cis-Golgi matrix protein which is one component of the detergent and salt resistant Golgi matrix. It is a peripheral membrane protein highly bound to Golgi membrane and localized mainly at the cytoplasmic face of cis-Golgi membrane. Together with its interacting partner proteins, including p115, giantin, GRASP65, and Rab GTPase, GOLGA2/GM130 is involved in the regulation of ER-to-Golgi transport and also in the maintenance of the Golgi structure. Emerging evidence suggest that the GOLGA2/GM130 has potential roles in the control of glycosylation, cell cycle progression, and higher order cell functions such as cell polarization and directed cell migration. (PMID: 20197635)

## Notable Publications

Author	Pubmed ID	Journal	Application
Emmanuelle Steib	36313808	Cell Rep Methods	IF
Zhaoyue Meng	36175399	Nat Commun	IHC
Ying Zhou	36213325	J Immunol Res	IF

## Storage

## Storage:

Store at -20°C. Stable for one year after shipment.

## Storage Buffer:

PBS with 0.02% sodium azide and 50% glycerol pH 7.3.

Aliquoting is unnecessary for -20°C storage

\*\*\* 20ul sizes contain 0.1% BSA

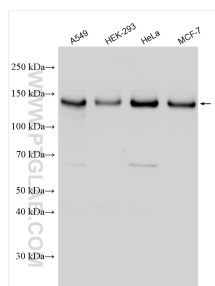
For technical support and original validation data for this product please contact:

T: 1 (888) 4PTGLAB (1-888-478-4522) (toll free in USA), or 1(312) 455-8498 (outside USA)

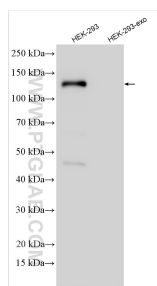
E: [proteintech@ptglab.com](mailto:proteintech@ptglab.com)  
W: [ptglab.com](http://ptglab.com)

This product is exclusively available under Proteintech Group brand and is not available to purchase from any other manufacturer.

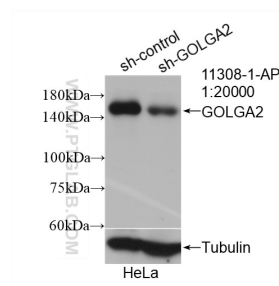
## Selected Validation Data



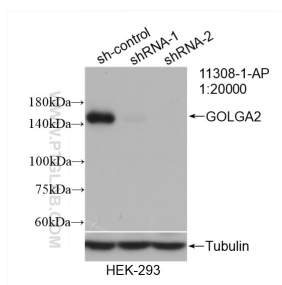
Various lysates were subjected to SDS PAGE followed by western blot with 11308-1-AP (GOLGA2/GM130 antibody) at dilution of 1:15000 incubated at room temperature for 1.5 hours.



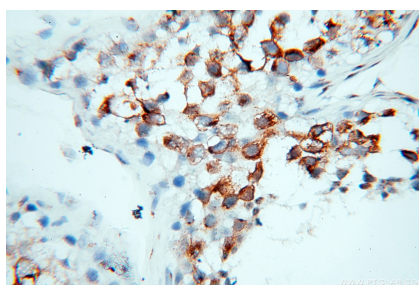
HEK-293 cells and HEK-293-derived exosomes (HEK-293-exo) were subjected to SDS PAGE followed by western blot with 11308-1-AP (GOLGA2/GM130 antibody) at dilution of 1:10000 incubated at room temperature for 1.5 hours.



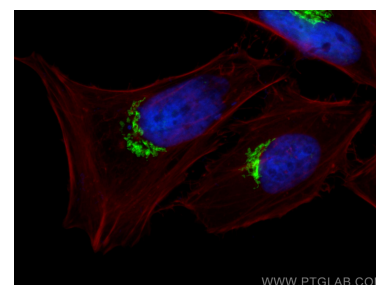
WB result of GOLGA2/GM130 antibody (11308-1-AP; 1:20000; incubated at room temperature for 1.5 hours) with sh-Control and sh-GOLGA2/GM130 transfected HeLa cells.



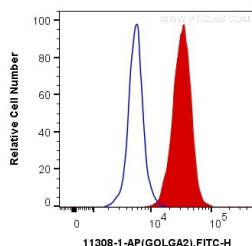
WB result of GOLGA2/GM130 antibody (11308-1-AP; 1:20000; incubated at room temperature for 1.5 hours) with sh-Control and sh-GOLGA2/GM130 transfected HEK-293 cells.



Immunohistochemical analysis of paraffin-embedded human testis using 11308-1-AP (GOLGA2/GM130 antibody) at dilution of 1:100 (under 40x lens).



Immunofluorescent analysis of (4% PFA) fixed HeLa cells using GOLGA2/GM130 antibody (11308-1-AP) at dilution of 1:200 and CoraLite®488-Conjugated AffiniPure Goat Anti-Rabbit IgG(H+L), CL594-Phalloidin (red).



1X10<sup>6</sup> HEK-293 cells were intracellularly stained with 0.4 ug Anti-Human GOLGA2/GM130 (11308-1-AP) and CoraLite®488-Conjugated AffiniPure Goat Anti-Rabbit IgG(H+L) at dilution 1:1000 (red), or 0.4 ug Control Antibody. Cells were fixed with 4% PFA and permeabilized with Flow Cytometry Perm Buffer (PF00011-C).