

For Research Use Only

PWP2 Polyclonal antibody

Catalog Number: 11390-1-AP **1 Publications**



Basic Information

Catalog Number: 11390-1-AP	GenBank Accession Number: BC014988	Purification Method: Antigen affinity purification
Size: 150ul , Concentration: 300 µg/ml by Nanodrop and 300 µg/ml by Bradford method using BSA as the standard;	GeneID (NCBI): 5822	Recommended Dilutions: WB 1:500-1:1000 IP 0.5-4.0 ug for IP and 1:500-1:1000 for WB
Source: Rabbit	Full Name: PWP2 periodic tryptophan protein homolog (yeast)	IF 1:10-1:100
Isotype: IgG	Calculated MW: 919 aa, 102 kDa	
Immunogen Catalog Number: AG1936	Observed MW: 102 kDa	

Applications

Tested Applications: IF, IP, WB, ELISA	Positive Controls:
Cited Applications: WB	WB : HeLa cells,
Species Specificity: human	IP : HeLa cells,
Cited Species: human	IF : HepG2 cells,

Background Information

The function of PWP2 remains largely unknown. Catalog#11390-1-AP is a rabbit polyclonal antibody raised against the full-length of human PWP2. The MW of this protein is 102 kDa, and this antibody specially recognises the 102 kDa protein.

Notable Publications

Author	Pubmed ID	Journal	Application
Wenjie Zhou	33732644	Front Oncol	WB

Storage

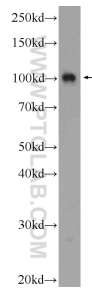
Storage:
Store at -20°C. Stable for one year after shipment.
Storage Buffer:
PBS with 0.02% sodium azide and 50% glycerol pH 7.3.
Aliquoting is unnecessary for -20°C storage

*** 20ul sizes contain 0.1% BSA

For technical support and original validation data for this product please contact:
T: 1 (888) 4PTGLAB (1-888-478-4522) (toll free in USA), or 1(312) 455-8498 (outside USA)
E: proteintech@ptglab.com
W: ptglab.com

This product is exclusively available under Proteintech Group brand and is not available to purchase from any other manufacturer.

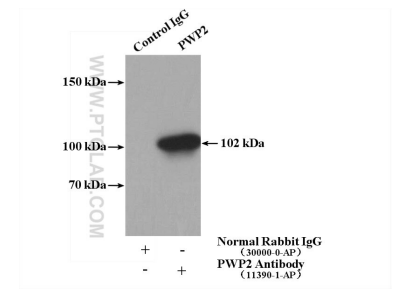
Selected Validation Data



HeLa cells were subjected to SDS PAGE followed by western blot with 11390-1-AP (PWP2 Antibody) at dilution of 1:600 incubated at room temperature for 1.5 hours.



Immunofluorescent analysis of HepG2 cells, using PWP2 antibody 11390-1-AP at 1:25 dilution and Rhodamine-labeled goat anti-rabbit IgG (red). Blue pseudocolor = DAPI (fluorescent DNA dye).



IP Result of anti-PWP2 (IP:11390-1-AP, 4ug; Detection:11390-1-AP 1:600) with HeLa cells lysate 2400ug.