

For Research Use Only

SIX2 Polyclonal antibody

Catalog Number: 11562-1-AP

Featured Product

263 Publications



Basic Information

Catalog Number:

11562-1-AP

Size:

150ul, Concentration: 750 ug/ml by Nanodrop;

Source:

Rabbit

Isotype:

IgG

Immunogen Catalog Number:

AG2124

GenBank Accession Number:

BC024033

GeneID (NCBI):

10736

UNIPROT ID:

Q9NPC8

Full Name:

SIX homeobox 2

Calculated MW:

291 aa, 32 kDa

Observed MW:

32-37 kDa

Purification Method:

Antigen affinity purification

Recommended Dilutions:

WB: 1:2000-1:10000

IP: 0.5-4.0 ug for 1.0-3.0 mg of total protein lysate

Applications

Tested Applications:

WB, IP, ELISA

Cited Applications:

WB, IP, ChIP

Species Specificity:

human

Cited Species:

human, mouse, rat, pig, rabbit, canine, alligator

Positive Controls:

WB : HEK-293 cells, L02 cells, PC-3 cells

IP : HEK-293 cells,

Background Information

The SIX proteins (sine oculis) are a family of homeodomain transcription factors that share a conserved DNA binding domain. Six members (Six1-Six6) of the Six gene family have been identified in mice and humans. SIX2, containing one homeobox DNA-binding domain, is highly expressed in fetal tissues but expression is limited in adult tissues. SIX2 may be involved in limb tendon and ligament development[PMID:21420949]. It has been previously shown that SIX2 is expressed in developing mesenchymal tissue including head and urogenital system at the time of overt midfacial and renal differentiation[PMID: 22282599]. This antibody is a rabbit polyclonal antibody raised against full length SIX2 of human origin.

Notable Publications

Author	Pubmed ID	Journal	Application
Ravian L van Ineveld	36180532	Nat Protoc	
Bingjue Li	32715474	J Pathol	
Ken Hiratsuka	36129975	Sci Adv	

Storage

Storage:

Store at -20°C. Stable for one year after shipment.

Storage Buffer:

PBS with 0.02% sodium azide and 50% glycerol, pH7.3

Aliquoting is unnecessary for -20°C storage

*** 20ul sizes contain 0.1% BSA

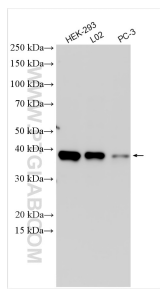
For technical support and original validation data for this product please contact:

T: 1 (888) 4PTGLAB (1-888-478-4522) (toll free in USA), or 1(312) 455-8498 (outside USA)

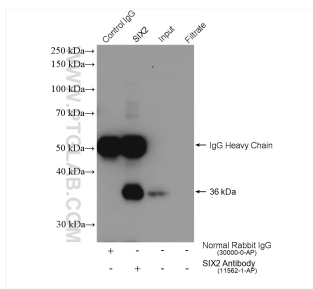
E: proteintech@ptglab.com
W: ptglab.com

This product is exclusively available under Proteintech Group brand and is not available to purchase from any other manufacturer.

Selected Validation Data



Various lysates were subjected to SDS PAGE followed by western blot with 11562-1-AP (SIX2 antibody) at dilution of 1:5000 incubated at room temperature for 1.5 hours.



IP result of anti-SIX2 (IP:11562-1-AP, 4ug; Detection:11562-1-AP 1:1000) with HEK-293 cells lysate 1320 ug.