

For Research Use Only

YPEL5 Polyclonal antibody

Catalog Number: 11730-1-AP **3 Publications**



Basic Information

Catalog Number: 11730-1-AP	GenBank Accession Number: BC000836	Purification Method: Antigen affinity purification
Size: 150ul , Concentration: 750 µg/ml by Nanodrop;	GeneID (NCBI): 51646	Recommended Dilutions: WB 1:1000-1:4000 IHC 1:50-1:500
Source: Rabbit	Full Name: yippee-like 5 (Drosophila)	
Isotype: IgG	Calculated MW: 121 aa, 14 kDa	
Immunogen Catalog Number: AG2328	Observed MW: 14 kDa	

Applications

Tested Applications: IHC, WB, ELISA	Positive Controls:
Cited Applications: IF, WB	WB: mouse brain tissue, mouse testis tissue, rat brain tissue
Species Specificity: human, mouse, rat	IHC: mouse testis tissue,
Cited Species: human, zebrafish	

Note-IHC: suggested antigen retrieval with TE buffer pH 9.0; (*) Alternatively, antigen retrieval may be performed with citrate buffer pH 6.0

Background Information

YPEL5 (Protein yippee-like 5) belongs to the yippee family and is involved in a certain cell division-related function. During cell cycle, YPEL5 protein is detected at different subcellular localizations; at interphase, it is located in the nucleus and centrosome, then it changes location sequentially to spindle poles, mitotic spindle, and spindle midzone during mitosis, and finally transfers to midbody at cytokinesis (PMID:20580816).

Notable Publications

Author	Pubmed ID	Journal	Application
Dan Zhou	33411363	Mol Oncol	WB
Lalit R Patel	37426340	iScience	WB
Hilliard Austin T AT	22325205	Neuron	WB,IF

Storage

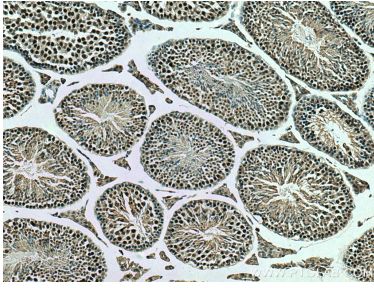
Storage:
Store at -20°C. Stable for one year after shipment.
Storage Buffer:
PBS with 0.02% sodium azide and 50% glycerol pH 7.3.
Aliquoting is unnecessary for -20°C storage

*** 20ul sizes contain 0.1% BSA

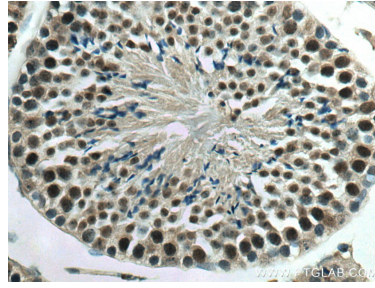
For technical support and original validation data for this product please contact:
T: 1 (888) 4PTGLAB (1-888-478-4522) (toll free in USA), or 1(312) 455-8498 (outside USA)
E: proteintech@ptglab.com
W: ptglab.com

This product is exclusively available under Proteintech Group brand and is not available to purchase from any other manufacturer.

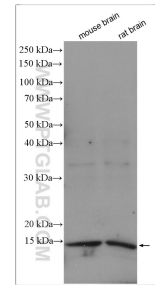
Selected Validation Data



Immunohistochemical analysis of paraffin-embedded mouse testis tissue slide using 11730-1-AP (YPEL5 antibody) at dilution of 1:200 (under 10x lens). Heat mediated antigen retrieval with Tris-EDTA buffer (pH 9.0).



Immunohistochemical analysis of paraffin-embedded mouse testis tissue slide using 11730-1-AP (YPEL5 antibody) at dilution of 1:200 (under 40x lens). Heat mediated antigen retrieval with Tris-EDTA buffer (pH 9.0).



Various lysates were subjected to SDS PAGE followed by western blot with 11730-1-AP (YPEL5 antibody) at dilution of 1:2000 incubated at room temperature for 1.5 hours.